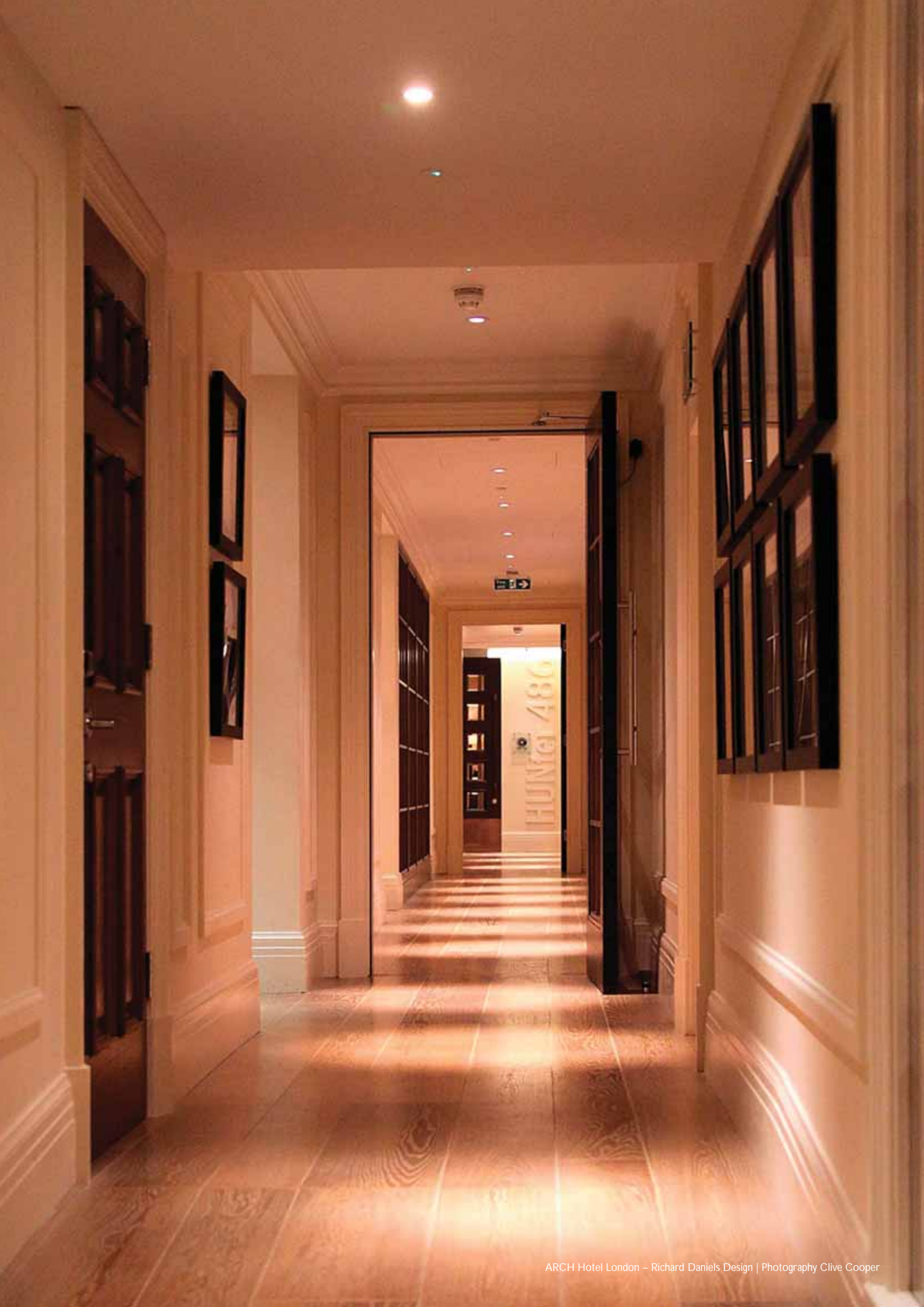


lucēnt[®]

ProSpex[®] Plus Downlights



Your International Lighting Partner

The ProSpex Plus range offers integrated recessed lighting with architectural design.

These revolutionary downlights incorporate sophisticated mechanisms, providing a new level of installation and effortless adjustment, even in the most architectural spaces.

Lucent Lighting continues to pioneer innovative solutions within the lighting industry.

With products available worldwide through our specialist distributor network, Lucent is your international lighting partner.

ProSpex[®] Plus Special Features



Architectural grade MR16 halogen, MR16 miniature metal halide and led downlights with both trim and trimless options.

Adjustable fixtures feature gear driven dual axis adjustment with centre beam optics.

Die cast aluminium trims with minimal thickness. Available in round and square, both adjustable and fixed.

Adjustable versions feature hot aiming with 45° centre beam tilt and 350° rotation, both with gear driven locking.

Trims available in round with conical and flat faceplates and square with pyramidal and flat faceplates.

Edge of pinhole painted matt black to ensure aperture edge is non-reflective and glare free.

Fixtures adjusted with just a screwdriver, in situ, whilst the lamp is on. Quick access to the adjustment mechanism and for re-lamping via easily removable front plate.

Matching wallwash fixtures in round and square complement the range.

ProSpex Plus fitted with ProSpex LED engine



Tilt adjustment point and indicator



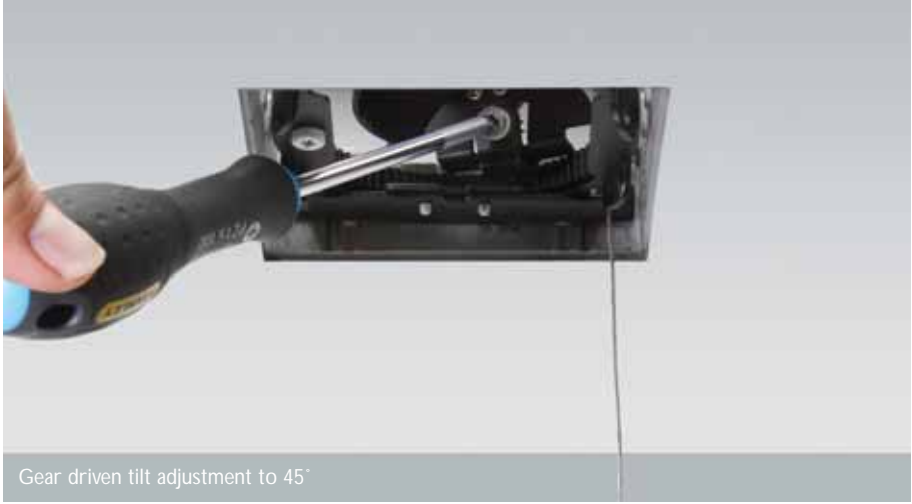
Gear driven tilt



Safety glass for IP44



Gear driven rotation



Lucent ProSpex adjustable downlights are supplied with lockable tilt and rotation feature, allowing hot aiming using a screwdriver which simplifies focusing while the lamp is on. The fixture remains locked in focus throughout the re-lamping process.

ProSpex® Plus Trimless



Our trimless downlights install flush to the ceiling to create a neat seamless appearance.

The installation of our die cast aluminium trimless plaster kits is easy. After the kit is installed, plastered and painted the fitting of the downlight mechanism is carried out with simple push up ball catches.

1. Fit plaster kit to underside of plasterboard with the countersunk plaster board screws provided
2. Skim plaster to the edge of the raised lip and decorate
3. Install downlight mechanism to the plaster kit
4. Attach trim to safety wire
5. Finished appearance in black.



Conical trim adjustable with ProSpex LED

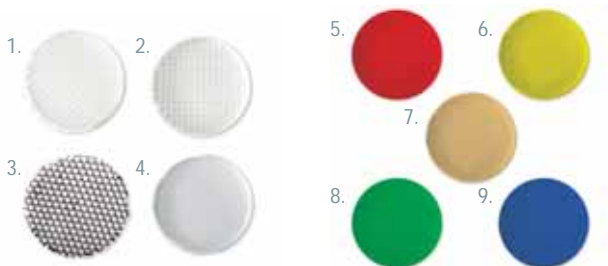
Pyramidal trim adjustable with ProSpex LED



Three Media System

- Up to three lenses or louvres can be fitted, see our range below.
- Glare reducing snoot

1. Spread 2. Diffusion 3. Honeycomb 4. Sand blasted
 5. Red 6. Yellow 7. 2700K 8. Green 9. Blue



ProSpex® Plus | Square Trim

Features

- Die cast aluminium one piece construction
- Adjustable fittings with gear driven tilt and rotation
- Hot aiming simplifies focussing while lamp is on
- Aiming remains locked in focus throughout re-lamping
- Up to 3 accessories can be fitted
- Standard safety glass
- IP 44 as standard



Pyramidal Trim Adjustable

Adjustable square downlight with one piece die cast pyramidal trim
 Deep regressed lamp for minimal glare
 45° tilt and 350° rotation
 Hot aim and lock
 Standard safety glass
 Up to 3 accessories can be fitted
 Low voltage, metal halide and LED versions
 IP44 as standard
 Overall size 112x112 mm
 Ceiling cut out 102x102 mm
 **Maximum height
 Low voltage 125mm
 Metal halide/LED 155mm

Available for the following lamp types
reference

Low Voltage

*12v	20/35/50w	QR-CBC 51	GU5.3	093+MR-TR-SQ-WH
*12v	20/35/50w	QR-CBC 51	GU5.3	093+MR-TR-SQ-BK

Metal Halide

*230v	20/35w	CMH-MR16/CDM-Rm	GX10	093+MH-TR-SQ-WH
*230v	20/35w	CMH-MR16/CDM-Rm	GX10	093+MH-TR-SQ-BK

LED

*230v	350/500/700mA	LED 50	n/a	093+LED-TR-SQ-WH
*230v	350/500/700mA	LED 50	n/a	093+LED-TR-SQ-BK

Pyramidal Trim Fixed

Fixed position square downlight with one piece die cast pyramidal trim
 Deep regressed lamp for minimal glare
 Standard safety glass
 Up to 3 accessories can be fitted
 Low voltage, metal halide and LED versions
 IP44 as standard
 Overall size 112x112 mm
 Ceiling cut out 102x102 mm
 **Maximum height
 Low voltage 110mm
 Metal halide/LED 140mm

Available for the following lamp types
reference

Low Voltage

*12v	20/35/50w	QR-CBC 51	GU5.3	090+33-MR-TR-SQ-WH
*12v	20/35/50w	QR-CBC 51	GU5.3	090+33-MR-TR-SQ-BK

Metal Halide

*230v	20/35w	CMH-MR16/CDM-Rm	GX10	090+33-MH-TR-SQ-WH
*230v	20/35w	CMH-MR16/CDM-Rm	GX10	090+33-MH-TR-SQ-BK

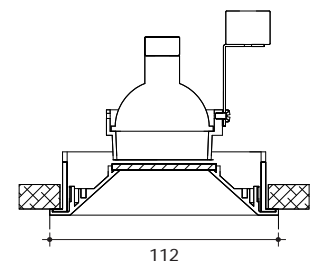
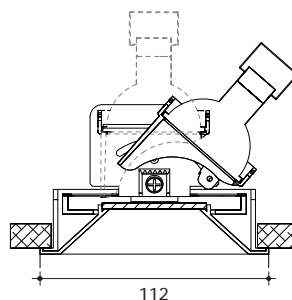
LED

*230v	350/500/700mA	LED 50	n/a	090+33-LED-TR-SQ-WH
*230v	350/500/700mA	LED 50	n/a	090+33-LED-TR-SQ-BK

Downlight Accessories	Reference Code
Honeycomb Louvre	LL45
Diffusing Lens	LLDF
Frosted Lens	LLFR
Linear Spread Lens	LLLS
Heavy Spread Lens	LLHS
Blue Glass Lens	LLBL
Red Glass Lens	LLRD
Green Glass Lens	LLGR
Yellow Glass Lens	LLYL
Blue Dichroic Lens	LLBD
Red Dichroic Lens	LLRD
Green Dichroic Lens	LLGD
Yellow Dichroic Lens	LLYD
UV Lens	LLUV
2700° Colour Lens	LL27

* Order transformers, metal halide ballasts, LED engines and drivers separately

** Allow a minimum of 25mm above the fitting for air gap





Square Adjustable Trim

Adjustable square downlight with one piece die cast flat trim
 Deep regressed lamp for minimal glare
 Matt black aperture for glare control
 45° tilt and 350° rotation
 Hot aim and lock
 Standard safety glass
 Up to 3 accessories can be fitted
 Low voltage, metal halide and LED versions
 IP44 as standard
 Overall size 112x112 mm
 Ceiling cut out 102x102 mm
 **Maximum height
 Low voltage 115mm
 Metal halide/LED 130mm

Available for the following lamp types
reference

Low Voltage

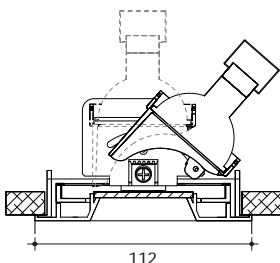
*12v	20/35/50w	QR-CBC 51	GU5.3	093+33-MR-TR-SQ-WH
*12v	20/35/50w	QR-CBC 51	GU5.3	093+33-MR-TR-SQ-BK

Metal Halide

*230v	20/35w	CMH-MR16/CDM-Rm	GX10	093+33-MH-TR-SQ-WH
*230v	20/35w	CMH-MR16/CDM-Rm	GX10	093+33-MH-TR-SQ-BK

LED

*230v	350/500/700mA	LED 50	n/a	093+33-LED-TR-SQ-WH
*230v	350/500/700mA	LED 50	n/a	093+33-LED-TR-SQ-BK



Square Fixed Trim

Fixed position square downlight with one piece die cast flat trim
 Deep regressed lamp for minimal glare
 Matt black aperture for glare control
 Standard safety glass
 Up to 3 accessories can be fitted
 Low voltage, metal halide and LED versions
 IP44 as standard
 Overall size 112x112 mm
 Ceiling cut out 102x102 mm
 **Maximum height
 Low voltage 100mm
 Metal halide/LED 130mm

Available for the following lamp types
reference

Low Voltage

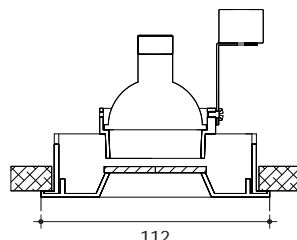
*12v	20/35/50w	QR-CBC 51	GU5.3	090+33-MR-TR-SQ-WH
*12v	20/35/50w	QR-CBC 51	GU5.3	090+33-MR-TR-SQ-BK

Metal Halide

*230v	20/35w	CMH-MR16 / CDM-Rm	GX10	090+33-MH-TR-SQ-WH
*230v	20/35w	CMH-MR16 / CDM-Rm	GX10	090+33-MH-TR-SQ-BK

LED

*230v	350/500/700mA	LED 50	n/a	090+33-LED-TR-SQ-WH
*230v	350/500/700mA	LED 50	n/a	090+33-LED-TR-SQ-BK



Square Wallwash Trim

Wallwash downlight with one piece die cast trim
 Internal reflector and linear spread lens for consistent and even illumination both vertically and horizontally
 Low voltage, metal halide and LED versions
 IP44 as standard
 Overall size 112x112 mm
 Ceiling cut out 102x102 mm
 **Maximum height
 Low voltage 115mm
 Metal halide/LED 145mm

Available for the following lamp types
reference

Low Voltage

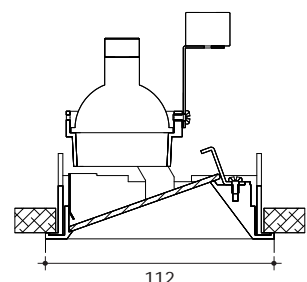
*12v	20/35/50w	QR-CBC 51	GU5.3	090+MR-TL-WW-SQ-WH
*12v	20/35/50w	QR-CBC 51	GU5.3	090+MR-TL-WW-SQ-BK

Metal Halide

*230v	20/35w	CMH-MR16 / CDM-Rm	GX10	090+MH-TL-WW-SQ-WH
*230v	20/35w	CMH-MR16 / CDM-Rm	GX10	090+MH-TL-WW-SQ-BK

LED

*230v	350/500/700mA	LED 50	n/a	090+LED-TL-WW-SQ-WH
*230v	350/500/700mA	LED 50	n/a	090+LED-TL-WW-SQ-BK



ProSpex® Plus | Square Trimless

Features

- Die cast aluminium one piece construction
- Separate die cast plaster in kit
- Adjustable fittings with gear driven tilt and rotation
- Hot aiming simplifies focussing while lamp is on
- Aiming remains locked in focus throughout re-lamping
- Up to 3 accessories can be fitted
- Standard safety glass
- IP 44 as standard



Pyramidal Adjustable Trimless

Adjustable square downlight with one piece die cast pyramidal trim
 Separate die cast plaster in kit
 Deep regressed lamp for minimal glare
 45° lockable tilt and 350° rotation
 Hot aim and lock
 Standard safety glass
 Up to 3 accessories can be fitted
 Low voltage, metal halide and LED versions
 IP44 as standard
 Overall size 100 x 100
 Ceiling cut out 102 x 102
 **Maximum height
 Low voltage 125mm
 Metal halide/LED 155mm

Available for the following lamp types
reference

Low Voltage

*12v	20/35/50w	QR-CBC 51	GU5.3	093+MR-TL-SQ-WH
*12v	20/35/50w	QR-CBC 51	GU5.3	093+MR-TL-SQ-BK

Metal Halide

*230v	20/35w	CMH-MR16/CDM-Rm	GX10	093+MH-TL-SQ-WH
*230v	20/35w	CMH-MR16/CDM-Rm	GX10	093+MH-TL-SQ-BK

LED

*230v	350/500/700mA	LED 50	n/a	093+LED-TL-SQ-WH
*230v	350/500/700mA	LED 50	n/a	093+LED-TL-SQ-BK

Pyramidal Fixed

Fixed position square downlight with one piece die cast pyramidal trim
 Separate die cast plaster in kit
 Deep regressed lamp for minimal glare
 Standard safety glass
 Up to 3 accessories can be fitted
 Low voltage, metal halide and LED versions
 IP44 as standard
 Overall size 100 x 100
 Ceiling cut out 102 x 102
 **Maximum height
 Low voltage 110mm
 Metal halide/LED 140mm

Available for the following lamp types
reference

Low Voltage

*12v	20/35/50w	QR-CBC 51	GU5.3	090+MR-TL-SQ-WH
*12v	20/35/50w	QR-CBC 51	GU5.3	090+MR-TL-SQ-BK

Metal Halide

*230v	20/35w	CMH-MR16/CDM-Rm	GX10	090+MH-TL-SQ-WH
*230v	20/35w	CMH-MR16/CDM-Rm	GX10	090+MH-TL-SQ-BK

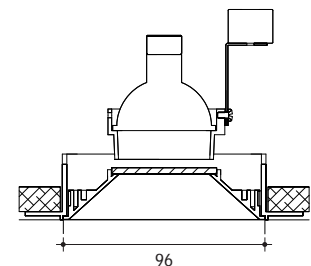
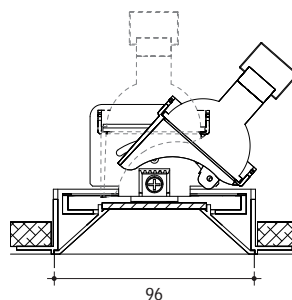
LED

*230v	350/500/700mA	LED 50	n/a	090+LED-TL-SQ-WH
*230v	350/500/700mA	LED 50	n/a	090+LED-TL-SQ-BK

Downlight Accessories	Reference Code
Honeycomb Louvre	LL45
Diffusing Lens	LLDF
Frosted Lens	LLFR
Linear Spread Lens	LLLS
Heavy Spread Lens	LLHS
Blue Glass Lens	LLBL
Red Glass Lens	LLRD
Green Glass Lens	LLGR
Yellow Glass Lens	LLYL
Blue Dichroic Lens	LLBD
Red Dichroic Lens	LLRD
Green Dichroic Lens	LLGD
Yellow Dichroic Lens	LLYD
UV Lens	LLUUV
2700° Colour Lens	LL27

* Order transformers, metal halide ballasts, LED engines and drivers separately

** Allow a minimum of 25mm above the fitting for air gap





Square Adjustable Trimless

Adjustable square downlight with one piece die cast flat trim
 Deep regressed lamp for minimal glare
 Matt black aperture for glare control
 Standard safety glass
 45° lockable tilt and 350° rotation
 Hot aim and lock
 Up to 3 accessories can be fitted
 Low voltage, metal halide and LED versions
 IP44 as standard
 Overall size 100 x 100
 Ceiling cut out 102 x 102
 **Maximum height
 Low voltage 115mm
 Metal halide/LED 130mm

Available for the following lamp types

reference

Low Voltage

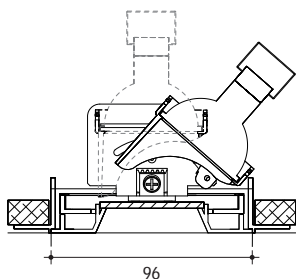
*12v	20/35/50w	QR-CBC 51	GU5.3	093+33-MR-TL-SQ-WH
*12v	20/35/50w	QR-CBC 51	GU5.3	093+33-MR-TL-SQ-BK

Metal Halide

*230v	20/35w	CMH-MR16 / CDM-Rm GX10	093+33-MH-TL-SQ-WH
*230v	20/35w	CMH-MR16 / CDM-Rm GX10	093+33-MH-TL-SQ-BK

LED

*230v	350/500/700mA	LED 50	n/a	093+33-LED-TL-SQ-WH
*230v	350/500/700mA	LED 50	n/a	093+33-LED-TL-SQ-BK



Square Fixed Trimless

Fixed position square downlight with one piece die cast flat trim
 Deep regressed lamp for minimal glare
 Matt black aperture for glare control
 Standard safety glass
 Up to 3 accessories can be fitted
 Low voltage, metal halide and LED versions
 IP44 as standard
 Overall size 100 x 100
 Ceiling cut out 102 x 102
 **Maximum height
 Low voltage 100mm
 Metal halide/LED 130mm

Available for the following lamp types

reference

Low Voltage

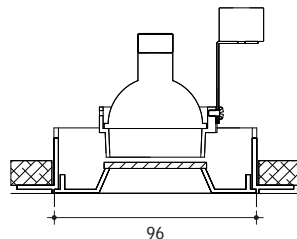
*12v	20/35/50w	QR-CBC 51	GU5.3	090+33-MR-TL-SQ-WH
*12v	20/35/50w	QR-CBC 51	GU5.3	090+33-MR-TL-SQ-BK

Metal Halide

*230v	20/35w	CMH-MR16 / CDM-Rm GX10	090+33-MH-TL-SQ-WH
*230v	20/35w	CMH-MR16 / CDM-Rm GX10	090+33-MH-TL-SQ-BK

LED

*230v	350/500/700mA	LED 50	n/a	090+33-LED-TL-SQ-WH
*230v	350/500/700mA	LED 50	n/a	090+33-LED-TL-SQ-BK



Square Wallwash Trimless

Wallwash downlight with one piece die cast trim
 Internal reflector and linear spread lens for consistent and even illumination both vertically and horizontally
 Low voltage, metal halide and LED versions
 IP44 as standard
 Overall size 100 x 100
 Ceiling cut out 102 x 102
 **Maximum height
 Low voltage 115mm
 Metal halide/LED 145mm

Available for the following lamp types

reference

Low Voltage

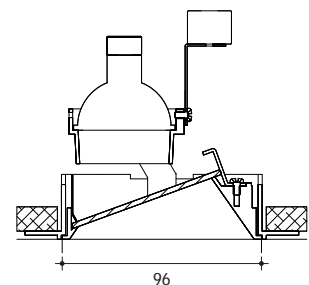
12v	20/35/50w	QR-CBC 51	GU5.3	090+MR-TL-WW-SQ-WH
12v	20/35/50w	QR-CBC 51	GU5.3	090+MR-TL-WW-SQ-BK

Metal Halide

*230v	20/35w	CMH-MR16 / CDM-Rm GX10	090+MH-TL-WW-SQ-WH
*230v	20/35w	CMH-MR16 / CDM-Rm GX10	090+MH-TL-WW-SQ-BK

LED

*230v	350/500/700mA	LED 50	n/a	090+LED-TL-WW-SQ-WH
*230v	350/500/700mA	LED 50	n/a	090+LED-TL-WW-SQ-BK



ProSpex® Plus | Round Trim

Features

- Die cast aluminium one piece construction
- Adjustable fittings with gear driven tilt and rotation
- Hot aiming simplifies focussing while lamp is on
- Aiming remains locked in focus throughout re-lamping
- Up to 3 accessories can be fitted
- Standard safety glass
- IP 44 as standard



Conical Adjustable Trim

Adjustable round downlight with one piece die cast conical trim
 Deep regressed lamp for minimal glare
 45° tilt and 350° rotation
 Hot aim and lock
 Standard safety glass
 Up to 3 accessories can be fitted
 Low voltage, metal halide and LED versions
 IP44 as standard
 Overall size 112 mm
 Ceiling cut out 102 mm
 **Maximum height
 Low voltage 125mm
 Metal halide/LED 155mm

Available for the following lamp types
reference

Low Voltage

*12v	20/35/50w	QR-CBC 51	GU5.3	093+MR-TR-WH
*12v	20/35/50w	QR-CBC 51	GU5.3	093+MR-TR-BK

Metal Halide

*230v	20/35w	CMH-MR16/CDM-Rm	GX10	093+MH-TR-WH
*230v	20/35w	CMH-MR16/CDM-Rm	GX10	093+MH-TR-BK

LED

*230v	350/500/700mA	LED 50	n/a	093+LED-TR-WH
*230v	350/500/700mA	LED 50	n/a	093+LED-TR-BK

Conical Fixed Trim

Fixed position round downlight with one piece die cast conical trim
 Deep regressed lamp for minimal glare
 Standard safety glass
 Up to 3 accessories can be fitted
 Low voltage, metal halide and LED versions
 IP44 as standard
 Overall size 112 mm
 Ceiling cut out 102 mm
 **Maximum height
 Low voltage 110mm
 Metal halide/LED 140mm

Available for the following lamp types
reference

Low Voltage

*12v	20/35/50w	QR-CBC 51	GU5.3	090+MR-TR-WH
*12v	20/35/50w	QR-CBC 51	GU5.3	090+MR-TR-BK

Metal Halide

*230v	20/35w	CMH-MR16/CDM-Rm	GX10	090+MH-TR-WH
*230v	20/35w	CMH-MR16/CDM-Rm	GX10	090+MH-TR-BK

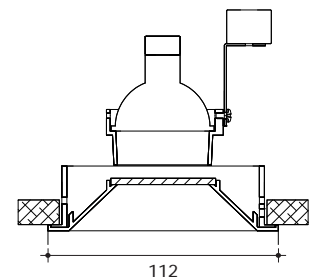
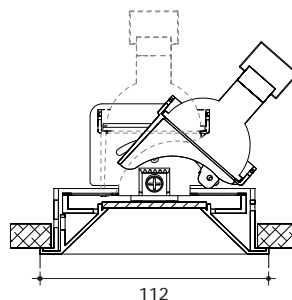
LED

*230v	350/500/700mA	LED 50	n/a	090+LED-TR-WH
*230v	350/500/700mA	LED 50	n/a	090+LED-TR-BK

Downlight Accessories	Reference Code
Honeycomb Louvre	LL45
Diffusing Lens	LLDF
Frosted Lens	LLFR
Linear Spread Lens	LLLS
Heavy Spread Lens	LLHS
Blue Glass Lens	LLBL
Red Glass Lens	LLRD
Green Glass Lens	LLGR
Yellow Glass Lens	LLYL
Blue Dichroic Lens	LLBD
Red Dichroic Lens	LLRD
Green Dichroic Lens	LLGD
Yellow Dichroic Lens	LLYD
UV Lens	LLUUV
2700° Colour Lens	LL27

* Order transformers, metal halide ballasts, LED engines and drivers separately

** Allow a minimum of 25mm above the fitting for air gap





Pinhole Adjustable Trim

Adjustable round downlight with one piece die cast flat trim
 Deep regressed lamp for minimal glare
 Matt black aperture for glare control
 45° tilt and 350° rotation
 Hot aim and lock
 Standard safety glass
 Up to 3 accessories can be fitted
 Low voltage, metal halide and LED versions
 IP44 as standard
 Overall size 112 mm
 Ceiling cut out 102 mm
 **Maximum height
 Low voltage 115mm
 Metal halide/LED 130mm

Available for the following lamp types

reference

Low Voltage

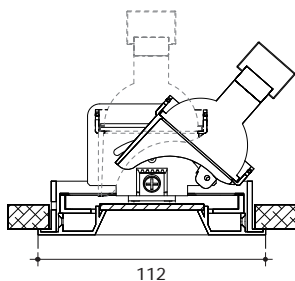
*12v	20/35/50w	QR-CBC 51	GU5.3	093+13-MR-TR-WH
*12v	20/35/50w	QR-CBC 51	GU5.3	093+13-MR-TR-BK

Metal Halide

*230v	20/35w	CMH-MR16/CDM-Rm	GX10	093+13-MH-TR-WH
*230v	20/35w	CMH-MR16/CDM-Rm	GX10	093+13-MH-TR-BK

LED

*230v	350/500/700mA	LED 50	n/a	093+13-LED-TR-WH
*230v	350/500/700mA	LED 50	n/a	093+13-LED-TR-BK



Pinhole Fixed Trim

Fixed position round downlight with one piece die cast flat trim
 Deep regressed lamp for minimal glare
 Matt black aperture for glare control
 Standard safety glass
 Up to 3 accessories can be fitted
 Low voltage, metal halide and LED versions
 IP44 as standard
 Overall size 112 mm
 Ceiling cut out 102 mm
 **Maximum height
 Low voltage 100mm
 Metal halide/LED 130mm

Available for the following lamp types

reference

Low Voltage

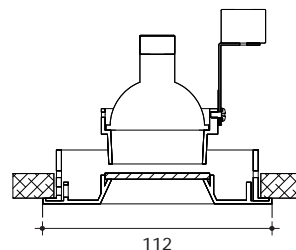
*12v	20/35/50w	QR-CBC 51	GU5.3	090+13-MR-TR-WH
*12v	20/35/50w	QR-CBC 51	GU5.3	090+13-MR-TR-BK

Metal Halide

*230v	20/35w	CMH-MR16/CDM-Rm	GX10	090+13-MH-TR-WH
*230v	20/35w	CMH-MR16/CDM-Rm	GX10	090+13-MH-TR-BK

LED

*230v	350/500/700mA	LED 50	n/a	090+13-LED-TR-WH
*230v	350/500/700mA	LED 50	n/a	090+13-LED-TR-BK



Round Wallwash Trim

Wallwash downlight with one piece die cast trim
 Internal reflector and linear spread lens for consistent and even illumination both vertically and horizontally
 Low voltage, metal halide and LED versions
 IP44 as standard
 Overall size 112 mm
 Ceiling cut out 102 mm
 **Maximum height
 Low voltage 115mm
 Metal halide/LED 145mm

Available for the following lamp types

reference

Low Voltage

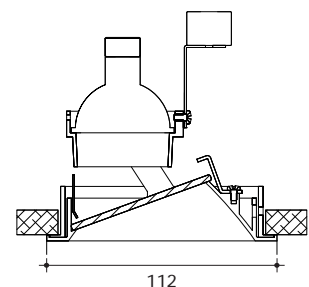
*12v	20/35/50w	QR-CBC 51	GU5.3	090+MR-TR-WW-WH
*12v	20/35/50w	QR-CBC 51	GU5.3	090+MR-TR-WW-BK

Metal Halide

*230v	20/35w	CMH-MR16/CDM-Rm	GX10	090+MH-TR-WW-WH
*230v	20/35w	CMH-MR16/CDM-Rm	GX10	090+MH-TR-WW-BK

LED

*230v	350/500/700mA	LED 50	n/a	090+LED-TR-WW-WH
*230v	350/500/700mA	LED 50	n/a	090+LED-TR-WW-BK



ProSpex® Plus | Round Trimless

Features

- Die cast aluminium one piece construction
- Separate die cast plaster in kit
- Adjustable fittings with gear driven tilt and rotation
- Hot aiming simplifies focussing while lamp is on
- Aiming remains locked in focus throughout re-lamping
- Up to 3 accessories can be fitted
- Standard safety glass
- IP 44 as standard



Conical Adjustable Trimless

Adjustable round downlight with one piece die cast conical trim
 Separate die cast plaster in kit
 Deep regressed lamp for minimal glare
 45° lockable tilt and 350° rotation
 Hot aim and lock
 Standard safety glass
 Up to 3 accessories can be fitted
 Low voltage, metal halide and LED versions
 IP44 as standard
 Overall size 100 mm
 Ceiling cut out 102mm
 **Maximum height
 Low voltage 125mm
 Metal halide/LED 155mm

Available for the following lamp types
reference

Low Voltage

*12v	20/35/50w	QR-CBC 51	GU5.3	093+MR-TL-WH
*12v	20/35/50w	QR-CBC 51	GU5.3	093+MR-TL-BK

Metal Halide

*230v	20/35w	CMH-MR16/CDM-Rm	GX10	093+MH-TL-WH
*230v	20/35w	CMH-MR16/CDM-Rm	GX10	093+MH-TL-BK

LED

*230v	350/500/700mA	LED 50	n/a	093+LED-TL-WH
*230v	350/500/700mA	LED 50	n/a	093+LED-TL-BK

Conical Fixed Trimless

Fixed position round downlight with one piece die cast conical trim
 Separate die cast plaster in kit
 Deep regressed lamp for minimal glare
 Standard safety glass
 Up to 3 accessories can be fitted
 Low voltage, metal halide and LED versions
 IP44 as standard
 Overall size 100 mm
 Ceiling cut out 102mm
 **Maximum height
 Low voltage 110mm
 Metal halide/LED 140mm

Available for the following lamp types
reference

Low Voltage

*12v	20/35/50w	QR-CBC 51	GU5.3	090+MR-TL-WH
*12v	20/35/50w	QR-CBC 51	GU5.3	090+MR-TL-BK

Metal Halide

*230v	20/35w	CMH-MR16/CDM-Rm	GX10	090+MH-TL-WH
*230v	20/35w	CMH-MR16/CDM-Rm	GX10	090+MH-TL-BK

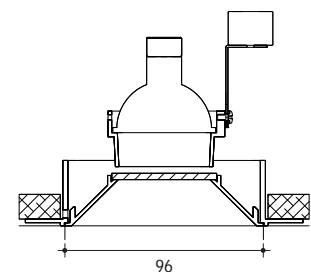
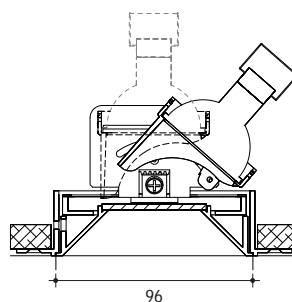
LED

*230v	350/500/700mA	LED 50	n/a	090+LED-TL-WH
*230v	350/500/700mA	LED 50	n/a	090+LED-TL-BK

Downlight Accessories	Reference Code
Honeycomb Louvre	LL45
Diffusing Lens	LLDF
Frosted Lens	LLFR
Linear Spread Lens	LLLS
Heavy Spread Lens	LLHS
Blue Glass Lens	LLBL
Red Glass Lens	LLRD
Green Glass Lens	LLGR
Yellow Glass Lens	LLYL
Blue Dichroic Lens	LLBD
Red Dichroic Lens	LLRD
Green Dichroic Lens	LLGD
Yellow Dichroic Lens	LLYD
UV Lens	LLUUV
2700° Colour Lens	LL27

* Order transformers, metal halide ballasts, LED engines and drivers separately

** Allow a minimum of 25mm above the fitting for air gap





Pinhole Adjustable Trimless

Adjustable round downlight with one piece die cast flat trim
 Deep regressed lamp for minimal glare
 Matt black aperture for glare control
 Standard safety glass
 45° lockable tilt and 350° rotation
 Hot aim and lock
 Up to 3 accessories can be fitted
 Low voltage, metal halide and LED versions
 IP44 as standard
 Overall size 100 mm
 Ceiling cut out 102mm
 **Maximum height
 Low voltage 115mm
 Metal halide/LED 130mm

Available for the following lamp types

reference

Low Voltage

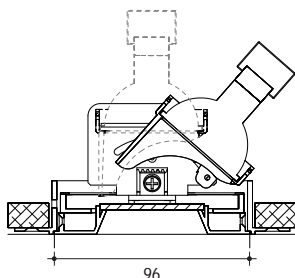
*12v	20/35/50w	QR-CBC 51	GU5.3	093+13-MR-TL-WH
*12v	20/35/50w	QR-CBC 51	GU5.3	093+13-MR-TL-BK

Metal Halide

*230v	20/35w	CMH-MR16 / CDM-Rm	GX10	093+13-MH-TL-WH
*230v	20/35w	CMH-MR16 / CDM-Rm	GX10	093+13-MH-TL-BK

LED

*230v	350/500/700mA	LED 50	n/a	093+13-LED-TL-WH
*230v	350/500/700mA	LED 50	n/a	093+13-LED-TL-BK



Pinhole Fixed Trimless

Fixed position round downlight with one piece die cast flat trim
 Deep regressed lamp for minimal glare
 Matt black aperture for glare control
 Standard safety glass
 Up to 3 accessories can be fitted
 Low voltage, metal halide and LED versions
 IP44 as standard
 Overall size 112 mm
 Ceiling cut out 102 mm
 **Maximum height
 Low voltage 100mm
 Metal halide/LED 130mm

Available for the following lamp types

reference

Low Voltage

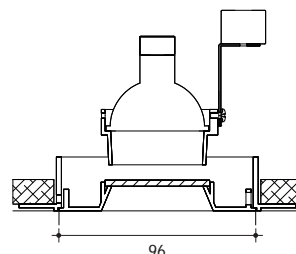
*12v	20/35/50w	QR-CBC 51	GU5.3	090+13-MR-TL-WH
*12v	20/35/50w	QR-CBC 51	GU5.3	090+13-MR-TL-BK

Metal Halide

*230v	20/35w	CMH-MR16 / CDM-Rm	GX10	090+13-MH-TL-WH
*230v	20/35w	CMH-MR16 / CDM-Rm	GX10	090+13-MH-TL-BK

LED

*230v	350/500/700mA	LED 50	n/a	090+13-LED-TL-WH
*230v	350/500/700mA	LED 50	n/a	090+13-LED-TL-BK



Round Wallwash Trimless

Wallwash downlight with one piece die cast trim
 Internal reflector and linear spread lens
 for consistent and even illumination both
 vertically and horizontally
 Low voltage, metal halide and LED versions
 IP44 as standard
 Overall size 100 mm
 Ceiling cut out 102mm
 **Maximum height
 Low voltage 115mm
 Metal halide/LED 145mm

Available for the following lamp types

reference

Low Voltage

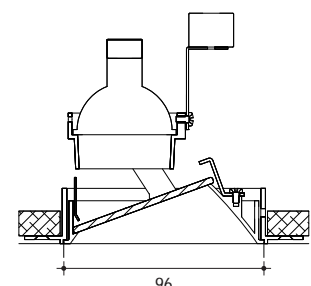
*12v	20/35/50w	QR-CBC 51	GU5.3	090+MR-TL-WW-WH
*12v	20/35/50w	QR-CBC 51	GU5.3	090+MR-TL-WW-BK

Metal Halide

*230v	20/35w	CMH-MR16 / CDM-Rm	GX10	090+MH-TL-WW-WH
*230v	20/35w	CMH-MR16 / CDM-Rm	GX10	090+MH-TL-WW-BK

LED

*230v	350/500/700mA	LED 50	n/a	090+LED-TL-WW-WH
*230v	350/500/700mA	LED 50	n/a	090+LED-TL-WW-BK



lucent[®]

Lucent Lighting UK Limited
The Old Station House
7a Coppetts Road
London N10 1NN

Tel: +44 (0)20 8442 0880
Fax: +44 (0)20 8444 6998

info@lucent-lighting.com
www.lucent-lighting.com