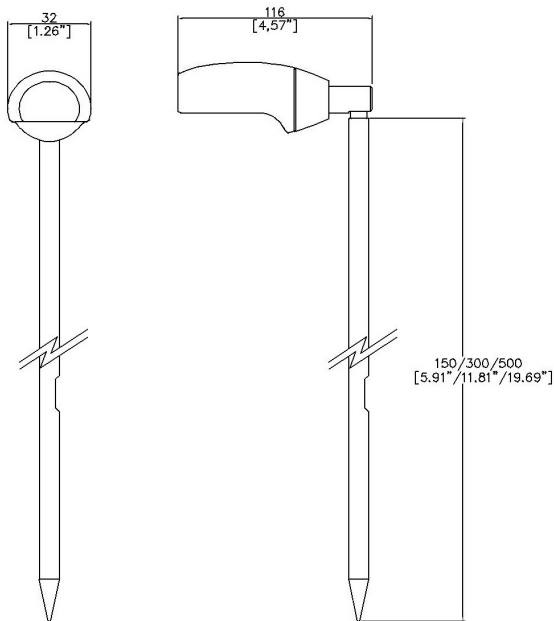


VistaMini Flood Spike



32mm (1.97”) overall diameter. IP65 constant voltage exterior grade spike mounted fully adjustable ultra wide flood light. 90° Pivot and 359° rotation.

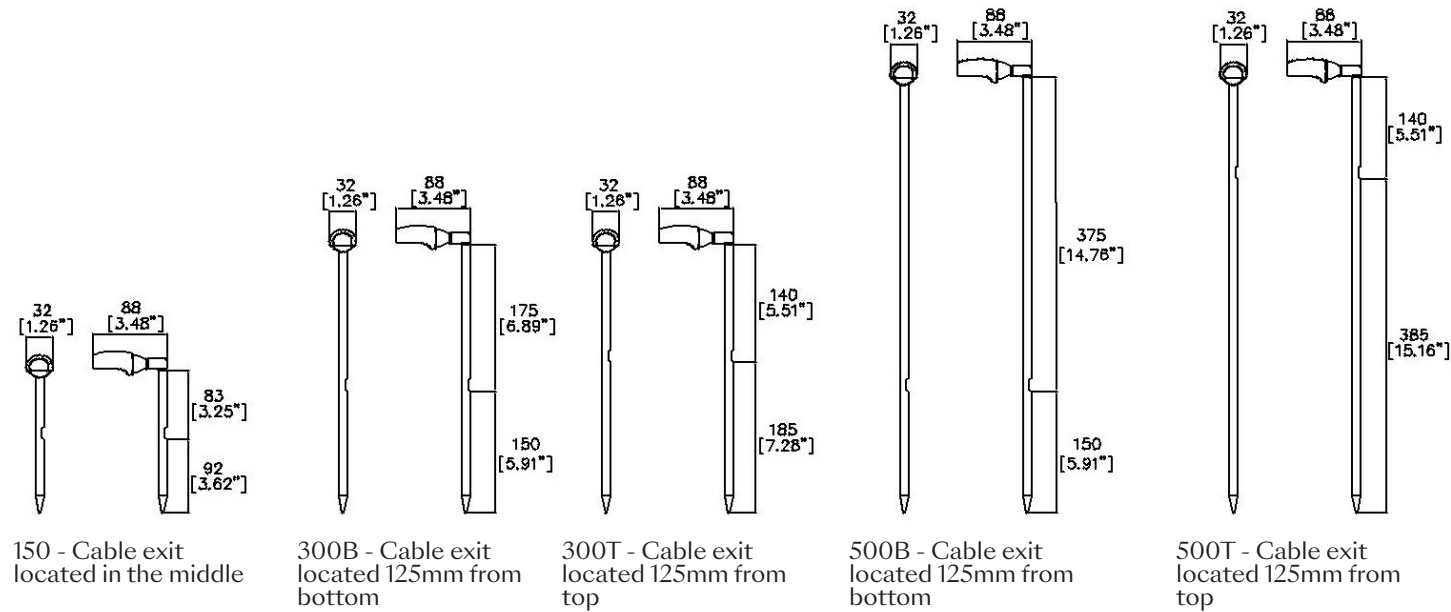


VF002-K

LED Source	LED
CCT	2700K
Supply Voltage	24v
Power	1.5W
Beam Angle	120°
Delivered Lumens	119
Delivered Intensisty cd	44
Efficacy lm/w	80
CRI	≥90 CRI
Ingress Protection	IP65

Project Ref: _____

Location Ref: _____



Fixture Order Code: VF002 - 27 - BK - K - - -

Fixture	VistaMini Flood
CCT	2700K
Finish	Black
Mount	Spike Mounted
Protocol	Non-Dim Analogue (0-10v) Phase DALI
Stem Length	150mm length. Cable exit located in the middle 300mm length. Cable exit 125mm from bottom 300mm length. Cable exit 125mm from top 500mm length. Cable exit 125mm from bottom 500mm length. Cable exit 125mm from top

Please refer to installation instruction for wiring diagram

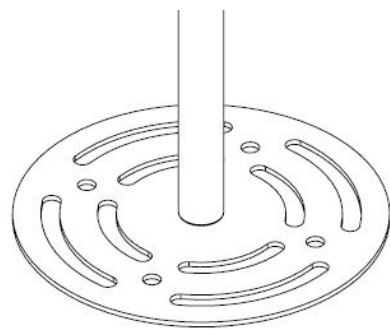
All Lucent Vista products are supplied with a 5m cable

This product has undergone a 1000 hour salt spray test in accordance with ASTM B117

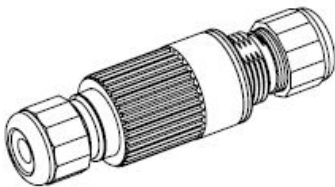
Project Ref: _____

Location Ref: _____

Accessories



VS-ANCHOR



TH381

Accessories Order Code:

Accessories	
VS-ANCHOR	Ground Anchor
TH381	IP68 Connector

Technical Details

Dimming. Whilst Lucent can offer the majority of its luminaires with various dimming options, it remains the responsibility of the specifier/installer to check and ensure compatibility of any control equipment used. Additional cabling may be required depending on the dimming protocol specified.

First Fix Requirement. Luminaire comprised of fixture body with ceiling trim and installation kit, which is to be fitted into the ceiling once finished. Ensure correct alignment of the installation kit before final assembly (see luminaire instllation instructions for details)

IP Rating. Tested from underside of the ceiling

It is the policy of Lucent Lighting to continually review and improve its products and therefore reserve the right to change any details of product or withdraw specifications without prior notice.

Luminaires designed to comply with EN60598 and all other standards.

This specification sheet superseded all previous versions.

All intellectual property rights pertaining to the product described above and to this document are owned by or licensed to Lucent Lighting Ltd.

We reserve the right to take whatever action is necessary to protect those intellectual property rights.

Please notify Lucent Lighting Ltd of any inaccuracies immediately. E&OE



Light efficiency:

80 Lumen/Watt

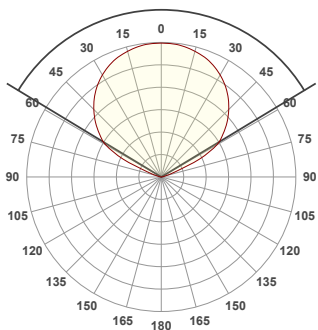
Light quality:

CRI: 93.5

Color temperature:

2700 K

117.6°



Product name:

VistaMini Flood, 2700K, 120°

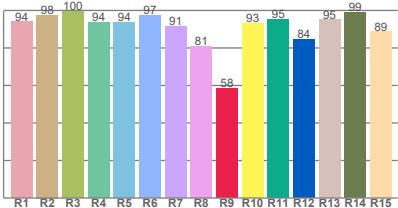
Item number:

VF002-27

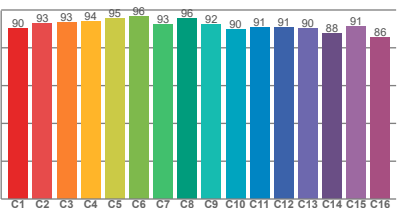
Delivered information for above
fixture and LED combination.

Output: 119 Lumen Peak intensity: 43.6 cd Power consumption: 1.5

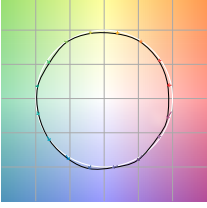
CRI R values



TM30 C Values

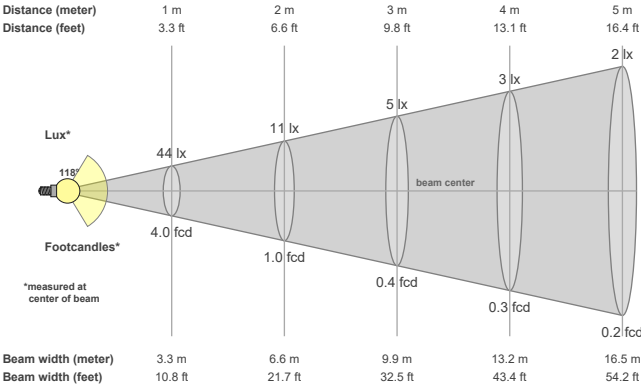


Color vector graphics



Color temperature	Color rendering index	Red component	Color fidelity	Color gamut	Color quality scale	Color coordinate cie 1931	Color coordinate cie 1931	Color coordinate	Color coordinate	Color deviation from black body
CCT	CRI	CRI R9	TM30 Rf	TM30 Rg	CQS	x	y	u	v	Δuv
2700 K	93.5	58.4	91.8	97.2	91.4	0.460	0.411	0.260	0.352	0.0010

Beam details



Beam angels

Beam angle 50%	Field angle 10%	Cutoff angle 2,5%
117.6°	141.2°	155.4°

Beam intensities

Peak intensity	Int. ratio in 120° cone	Int. ratio in 90° cone
43.6 cd	86.7%	58.2%

Beam intensities from 1-20m

1m	2m	3m	4m	5m	6m	7m	8m	9m	10m	11m	12m	13m	14m	15m	16m	17m	18m	19m	20m
3.3ft	6.6ft	9.8ft	13.1ft	16.4ft	19.7ft	23ft	26.2ft	29.5ft	32.8ft	36.1ft	39.4ft	42.7ft	45.9ft	49.2ft	52.5ft	55.8ft	59.1ft	62.3ft	65.6ft
44lx	11lx	5lx	3lx	2lx	1lx	1lx	1lx	1lx	0lx	0lx	0lx	0lx	0lx	0lx	0lx	0lx	0lx	0lx	0lx
4fcd	1fcd	0.4fcd	0.3fcd	0.2fcd	0.1fcd	0.1fcd	0.1fcd	0fcd	0fcd	0fcd	0fcd	0fcd	0fcd	0fcd	0fcd	0fcd	0fcd	0fcd	0fcd

The above information is for 2700K colour temperature.