

Installation Instructions ProSpex Soft50, 70 & 90 Trimless.

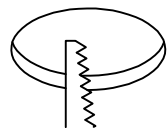
Instructions applicable for the following luminaires (suffix -TL):

Fixed versions prefix 050-, 070- & 090-

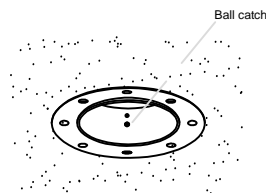
Accent adjustable versions prefix 053-, 073 & 033-

Soft Colour prefix 050-C, 070-C & 090-C (fixed) 053-C, 073-C & 093-C (Accent)

Applicable to all lamp/LED types.

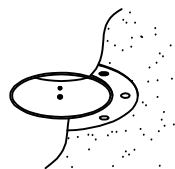


Cut hole as follows:	
Soft 50	61mmØ
Soft 70	79mmØ
Soft 90	102mmØ

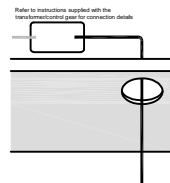


Fit the installation collar and fix to plasterboard with screws.

(Tip - for additional strength bond ring into the hole).



Skim plaster to the lip edge of the plaster ring. Make good and paint ceiling before installing luminaire body, cleaning any stray plaster from the trim.

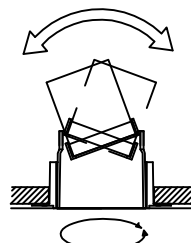


Connect transformer/control gear and insert through the plaster ring.



Install the luminaire housing into the plaster ring, until the ball catches in the trim locates into the groove in the luminaires body.

Fixture will sit flush with the finished ceiling.



Adjust luminaire accordingly.



Installation is now complete.

Installation Instructions ProSpex Soft50, 70 & 70 Trimmed.

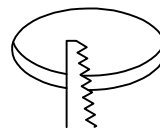
Instructions applicable for the following luminaires (suffix -TR):

Fixed versions prefix 050-, 070- & 090-

Accent adjustable versions prefix 053-, 073 & 033-

Soft Colour prefix 050-C, 070-C & 090-C (fixed) 053-C, 073-C & 093-C (Accent)

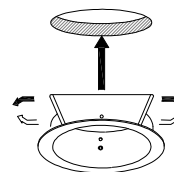
Applicable to all lamp/LED types.



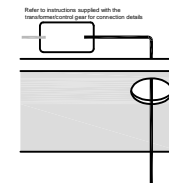
Cut hole as follows:	
Soft 50	61mmØ
Soft 90	79mmØ
Soft 90	102mmØ



Make good and paint ceiling before installing luminaire's bezel.



To install the ceiling trim into the ceiling, press spring blades toward the body and carefully insert into the ceiling cut-out. Push the luminaire up until trim is flat against the finished ceiling.

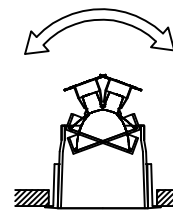


Connect transformer/control gear and insert through the ceiling ring.



Install the luminaire housing into the ceiling ring, until the ball catches in the trim locates into the groove in the luminaires body.

Fixture will sit flush with the finished ceiling.



Adjust luminaire accordingly.



Installation is now complete.