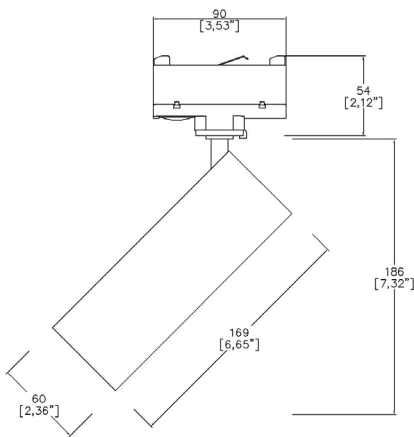


ProSpex TubeLED Mini High Efficacy



60mm (2.36") overall diameter. LED spotlight with integral driver. Available with monopoint mounting, magnetic track adaptor and 3 circuit track adaptor. Family of matching products also available.



16961-3CT

LED Source	LED	LED	LED	LED
CCT	3000K	3000K	3000K	3000K
Drive Current^	350mA	350mA	350mA	350mA
Power inc Driver	14W	14W	14W	14W
Beam Angle	NF(17°)	MF(24°)	FL(35°)	WFL(55°)
Delivered Lumens	1387	1384	1424	1365
Delivered Intensisty cd	11100	7089	4442	1924
Efficacy lm/w	99	99	102	98
Forward Volt	34V	34V	34V	34V
CRI	≥90 CRI	≥90 CRI	≥90 CRI	≥90 CRI



Project Ref: _____ Location Ref: _____

Fixture Order Code:

16961

 - - - - - -

3CT

Fixture
16961

TubeLED Mini High Efficacy

CCT
27
30
35
40

2700K
3000K
3500K
4000K

Beam
NF
MF
FL
WFL

Narrow Flood 17°
Medium Flood 24°
Flood 35°
Wide Flood 55°

Protocol
S
P
A
D
B

Non-Dim
Phase
Analogue (0-10v)
DALI
Bluetooth**

Colour Insert
SN
SG
CP
BZ
(Blank)

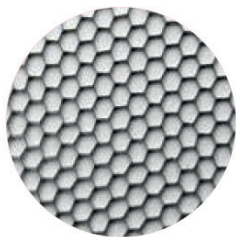
Satin Nickel
Satin Gold
Copper
Bronze
Not required standard black to be supplied

Finish
WH
BK
RAL

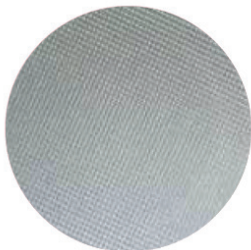
White
Black
Custom RAL Finish*

Fixing
3CT

3 Circuit Track Adaptor



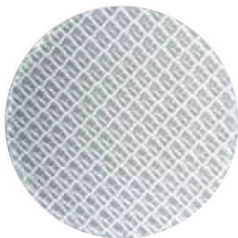
Honeycomb Louvre



Diffusing Lens



Frosted Lens



Heavy Spread Lens



Linear Spread Lens



Warm Tone

Accessories Order Code:

- Louvre/Lens
- LL45 Honeycomb Louvre
 - LLCC Warm Tone Lens
 - LLUV UV Lens
 - LLDF Diffusing Lens
 - LLFR Frosted Lens
 - LLLS Linear Spread Lens
 - LLHS Heavy Spread Lens

All photometric data is without accessories
Any use of accessories will reduce delivered lumen output and efficacy

Technical Details

*Custom RAL code must be specified. Custom RAL colours can increase prices and lead times

Dimming. Whilst Lucent can offer the majority of its luminaires with various dimming options, it remains the responsibility of the specifier/installer to check and ensure compatibility of any control equipment used. Additional cabling may be required depending on the dimming protocol specified.

**Bluetooth (wireless) is the communication method. The exact dimming protocol must be confirmed to allow the selection of suitable bluetooth devices, which may need to be mounted remotely from the spotlight.

First Fix Requirement. Please refer to installation instructions for first fix requirements for the monopoint types.

IP Rating. Tested from underside of the ceiling

It is the policy of Lucent Lighting to continually review and improve its products and therefore reserve the right to change any details of product or withdraw specifications without prior notice.

Luminaires designed to comply with EN60598 and all other standards.

This specification sheet superseded all previous versions.

All intellectual property rights pertaining to the product described above and to this document are owned by or licensed to Lucent Lighting Ltd.

We reserve the right to take whatever action is necessary to protect those intellectual property rights.

Please notify Lucent Lighting Ltd of any inaccuracies immediately. E&OE

Light efficiency:

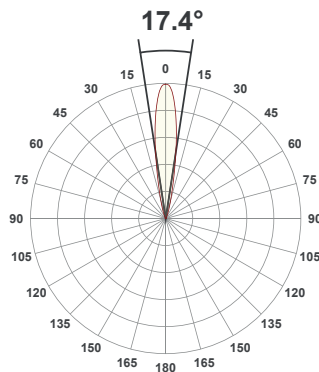
99 Lumen/Watt

Light quality:

CRI: 93.5

Color temperature:

3000 K



Product name:

**TubeLED High Efficacy 3000K
NF (17°) 350mA**

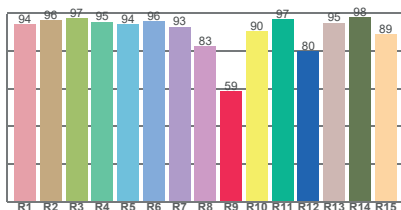
Item number:

16961-30-NF - 350mA

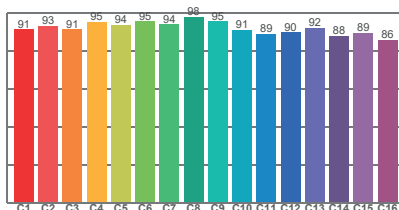
**Delivered information for
above fixture and LED
combination.**

Output: 1387 Lumen Peak intensity: 11100 cd Power consumption: 14.0

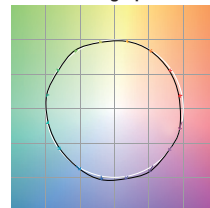
CRI R values



TM30 C Values

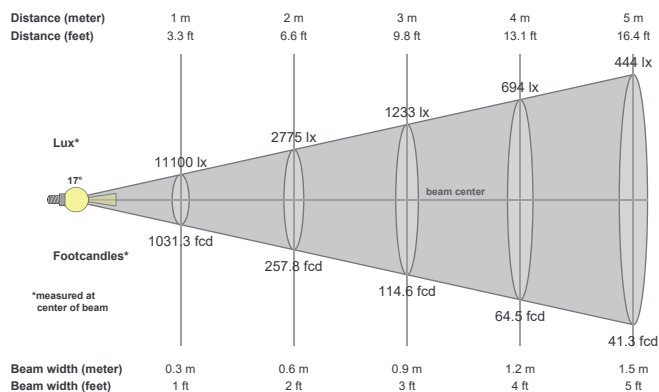


Color vector graphics



Color temperature	Color rendering index	Red component	Color fidelity	Color gamut	Color quality scale	Color coordinate cie 1931	Color coordinate cie 1931	Color coordinate	Color coordinate	Color deviation from black body
CCT	CRI	CRI R9	TM30 Rf	TM30 Rg	CQS	x	y	u	v	Δuv
3000 K	93.5	58.6	92.1	99.9	91.7	0.437	0.404	0.251	0.348	0.0008

Beam details



Beam angels

Beam angle 50%	Field angle 10%	Cutoff angle 2,5%
17.4°	34°	50°

Beam intensities

Peak intensity	Int. ratio in 120° cone	Int. ratio in 90° cone
11100 cd	99.6%	98.9%

Beam intensities from 1-20m

1m	2m	3m	4m	5m	6m	7m	8m	9m	10m	11m	12m	13m	14m	15m	16m	17m	18m	19m	20m
3.3ft	6.6ft	9.8ft	13.1ft	16.4ft	19.7ft	23ft	26.2ft	29.5ft	32.8ft	36.1ft	39.4ft	42.7ft	45.9ft	49.2ft	52.5ft	55.8ft	59.1ft	62.3ft	65.6ft
11100lx	2775lx	1233lx	694lx	444lx	308lx	227lx	173lx	137lx	111lx	92lx	77lx	66lx	57lx	49lx	43lx	38lx	34lx	31lx	28lx
1031.3fcd	257.8fcd	114.6fcd	64.5fcd	41.3fcd	28.6fcd	21fcd	16.1fcd	12.7fcd	10.3fcd	8.5fcd	7.2fcd	6.1fcd	5.3fcd	4.6fcd	4fcd	3.6fcd	3.2fcd	2.9fcd	2.6fcd

The above information is for 3000K colour temperatur.

Light efficiency:

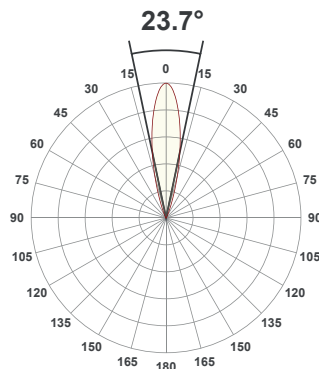
99 Lumen/Watt

Light quality:

CRI: 93.6

Color temperature:

3000 K



Product name:

**TubeLED High Efficacy 3000K
MF (24°) 350mA**

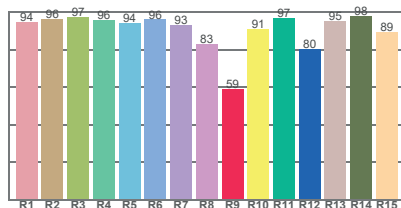
Item number:

16961-30-MF - 350mA

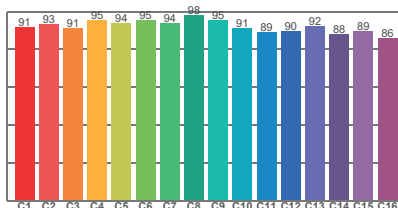
**Delivered information for
above fixture and LED
combination.**

Output: 1384 Lumen Peak intensity: 7089 cd Power consumption: 14.0

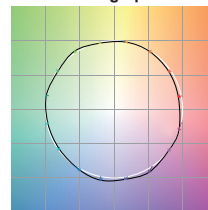
CRI R values



TM30 C Values

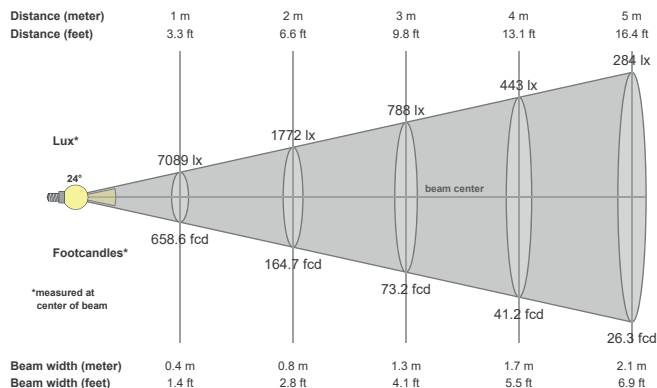


Color vector graphics



Color temperature	Color rendering index	Red component	Color fidelity	Color gamut	Color quality scale	Color coordinate cie 1931	Color coordinate cie 1931	Color coordinate	Color coordinate	Color diviation from black body
CCT	CRI	CRI R9	TM30 Rf	TM30 Rg	CQS	x	y	u	v	Δuv
3000 K	93.6	59.0	92.2	100.0	91.7	0.437	0.404	0.251	0.348	0.0006

Beam details



Beam angels

Beam angle 50%	Field angle 10%	Cutoff angle 2,5%
23.7°	41.9°	55.5°

Beam intensities

Peak intensity	Int. ratio in 120° cone	Int. ratio in 90° cone
7089 cd	99.7%	98.7%

Beam intensities from 1-20m

1m	2m	3m	4m	5m	6m	7m	8m	9m	10m	11m	12m	13m	14m	15m	16m	17m	18m	19m	20m
3.3ft	6.6ft	9.8ft	13.1ft	16.4ft	19.7ft	23ft	26.2ft	29.5ft	32.8ft	36.1ft	39.4ft	42.7ft	45.9ft	49.2ft	52.5ft	55.8ft	59.1ft	62.3ft	65.6ft
7089lx	1772lx	788lx	443lx	284lx	197lx	145lx	111lx	88lx	71lx	59lx	49lx	42lx	36lx	32lx	28lx	25lx	22lx	20lx	18lx
658.6fcd	164.7fcd	73.2fcd	41.2fcd	26.3fcd	18.3fcd	13.4fcd	10.3fcd	8.1fcd	6.6fcd	5.4fcd	4.6fcd	3.9fcd	3.4fcd	2.9fcd	2.6fcd	2.3fcd	2fcd	1.8fcd	1.6fcd

The above information is for 3000K colour temperatur.

Light efficiency:

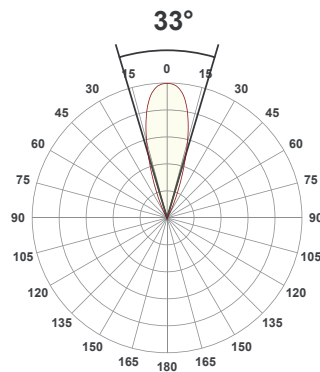
102 Lumen/Watt

Light quality:

CRI: 93.5

Color temperature:

3000 K



Product name:

**TubeLED High Efficacy 3000K
FL (35°) 350mA**

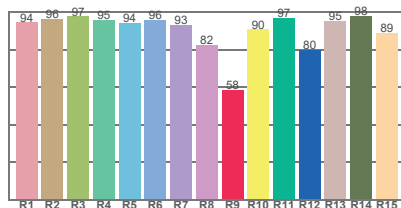
Item number:

16961-30-FL - 350mA

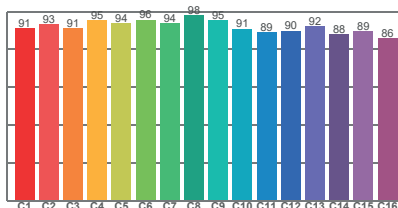
**Delivered information for
above fixture and LED
combination.**

Output: 1424 Lumen Peak intensity: 4442 cd Power consumption: 14.0

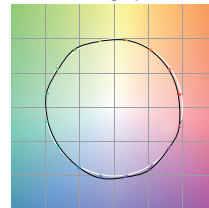
CRI R values



TM30 C Values

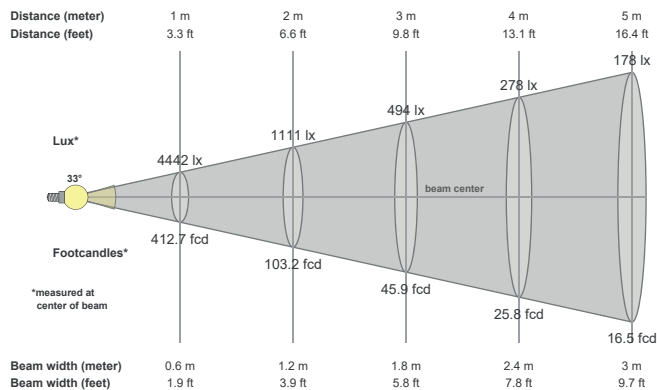


Color vector graphics



Color temperature	Color rendering index	Red component	Color fidelity	Color gamut	Color quality scale	Color coordinate cie 1931	Color coordinate cie 1931	Color coordinate	Color coordinate	Color divition from black body
CCT	CRI	CRI R9	TM30 Rf	TM30 Rg	CQS	x	y	u	v	Δuv
3000 K	93.5	58.5	92.1	99.8	91.7	0.437	0.404	0.251	0.348	0.0008

Beam details



Beam angels

Beam angle 50%	Field angle 10%	Cutoff angle 2,5%
33°	51.5°	62.9°

Beam intensities

Peak intensity	Int. ratio in 120° cone	Int. ratio in 90° cone
4442 cd	99.5%	98.6%

Beam intensities from 1-20m

1m	2m	3m	4m	5m	6m	7m	8m	9m	10m	11m	12m	13m	14m	15m	16m	17m	18m	19m	20m
3.3ft	6.6ft	9.8ft	13.1ft	16.4ft	19.7ft	23ft	26.2ft	29.5ft	32.8ft	36.1ft	39.4ft	42.7ft	45.9ft	49.2ft	52.5ft	55.8ft	59.1ft	62.3ft	65.6ft
4442lx	1111lx	494lx	278lx	178lx	123lx	91lx	69lx	55lx	44lx	37lx	31lx	26lx	23lx	20lx	17lx	15lx	14lx	12lx	11lx
412.7fcd	103.2fcd	45.9fcd	25.8fcd	16.5fcd	11.5fcd	8.4fcd	6.4fcd	5.1fcd	4.1fcd	3.4fcd	2.9fcd	2.4fcd	2.1fcd	1.8fcd	1.6fcd	1.4fcd	1.3fcd	1.1fcd	1fcd

The above information is for 3000K colour temperatur.

Light efficiency:

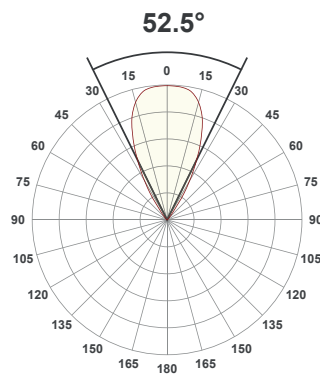
98 Lumen/Watt

Light quality:

CRI: 93.5

Color temperature:

3000 K



Product name:

**TubeLED High Efficacy 3000K
WFL (55°) 350mA**

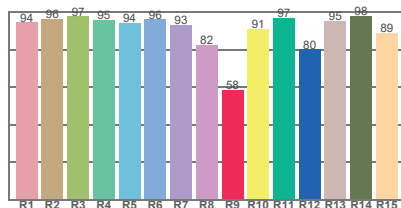
Item number:

16961-30-WFL - 350mA

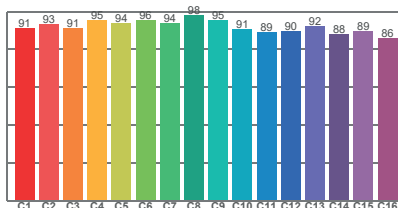
**Delivered information for
above fixture and LED
combination.**

Output: 1365 Lumen Peak intensity: 1924 cd Power consumption: 14.0

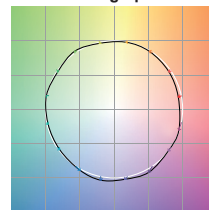
CRI R values



TM30 C Values

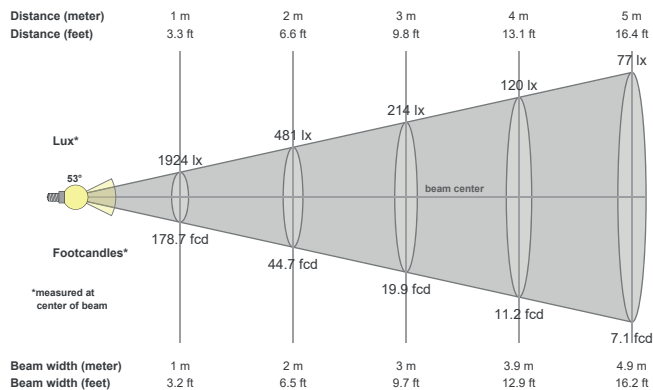


Color vector graphics



Color temperature	Color rendering index	Red component	Color fidelity	Color gamut	Color quality scale	Color coordinate cie 1931	Color coordinate cie 1931	Color coordinate	Color coordinate	Color diviation from black body
CCT	CRI	CRI R9	TM30 Rf	TM30 Rg	CQS	x	y	u	v	Δuv
3000 K	93.5	58.5	92.1	99.8	91.6	0.437	0.404	0.251	0.348	0.0007

Beam details



Beam angels

Beam angle 50%	Field angle 10%	Cutoff angle 2,5%
52.5°	72.6°	85.6°

Beam intensities

Peak intensity	Int. ratio in 120° cone	Int. ratio in 90° cone
1924 cd	99.6%	98.8%

Beam intensities from 1-20m

1m	2m	3m	4m	5m	6m	7m	8m	9m	10m	11m	12m	13m	14m	15m	16m	17m	18m	19m	20m
3.3ft	6.6ft	9.8ft	13.1ft	16.4ft	19.7ft	23ft	26.2ft	29.5ft	32.8ft	36.1ft	39.4ft	42.7ft	45.9ft	49.2ft	52.5ft	55.8ft	59.1ft	62.3ft	65.6ft
1924lx	481lx	214lx	120lx	77lx	53lx	39lx	30lx	24lx	19lx	16lx	13lx	11lx	10lx	9lx	8lx	7lx	6lx	5lx	5lx
178.7fcd	44.7fcd	19.9fcd	11.2fcd	7.1fcd	5fcd	3.6fcd	2.8fcd	2.2fcd	1.8fcd	1.5fcd	1.2fcd	1.1fcd	0.9fcd	0.8fcd	0.7fcd	0.6fcd	0.6fcd	0.5fcd	0.4fcd

The above information is for 3000K colour temperatur.