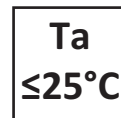


## Axis Mini Gen2 Installation Instructions

### Axis Mini/Axis Mini Straight Snoot 200/2-LED / 200/2-LS-LED



## Technical Parameters

LED Module	Drive Current	Typ. forward volt	Mod. Power
LED51/3	350mA max	36VDC	12.6W max
LED51/Q- HE	200mA max	33VDC	8.0W max
LED51/Q- HO	350mA max	34VDC	14.0W max
LED51/3-SS	1000mA max	11.5VDC	11.5W max
LED51/3-WD	350mA max	36VDC	11.9W max
LED51/3-TW	350mA max	36VDC	12.6W max

#### Note:

The recommended cable distance between the remote driver and the light source is 2 meters for most driver types. If distances greater than this are required please contact Lucent Lighting for alternative solutions.

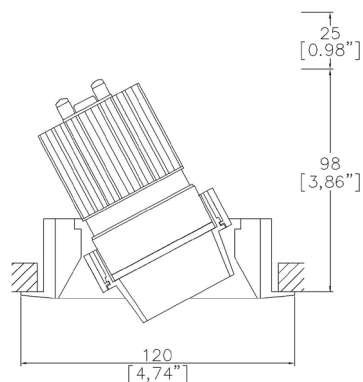
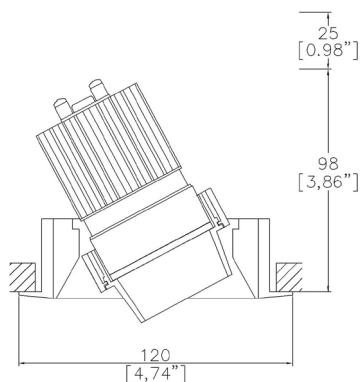


## IMPORTANT INFORMATION

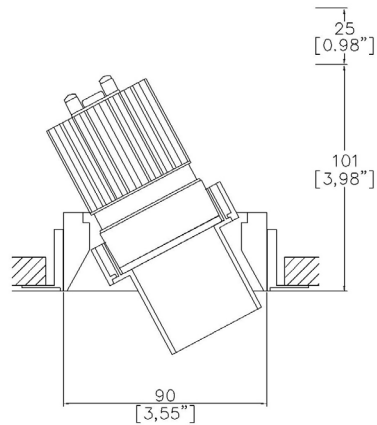
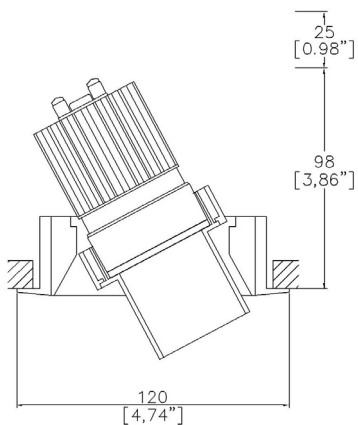
- Please read the following instructions carefully.
- Follow all national and local wiring and safety regulations.
- Connecting or disconnecting these luminaires while powered will damage the LED.
- Do not touch the LED or PCB.
- These products are designed for interior use only and only for downlighting applications.
- Optimal ambient temperature  $\leq 25^{\circ}\text{C}$ , operating range of components  $-20^{\circ}\text{C} - +40^{\circ}\text{C}$ .
- These products should only be installed by a qualified electrician.
- Lucent LED downlights light source is non user replaceable.
- Lucent LED downlights should only be replaced by a qualified person, the manufacturer or a similar qualified person.
- These products require an LED driver - DO NOT CONNECT DIRECTLY TO MAINS POWER!
- The fixing method is designed to hold the weight of the luminaire only.
- The top and bottom of the luminaire provides essential heat dissipation for the light source and must not be covered.
- The manufacturer bears no liability for damage caused by inappropriate use or application.
- Retain these instructions for future reference.

## Product information

### Axis Mini Standard Snoot



### Axis Mini Long Snoot

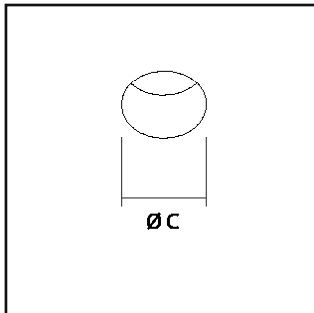


## Installation Steps

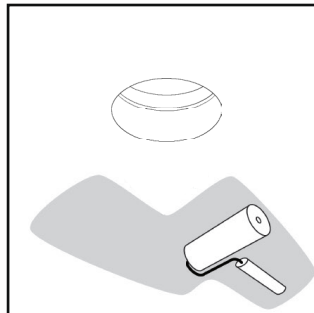


**TURN POWER OFF BEFORE INSPECTION, INSTALLATION OR REMOVAL!**

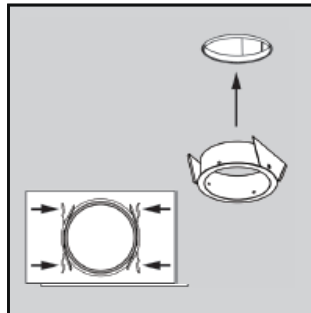
### Axis Mini (TR) Installation



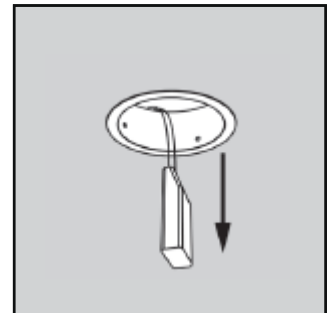
1. Create cutout C=Ø106mm



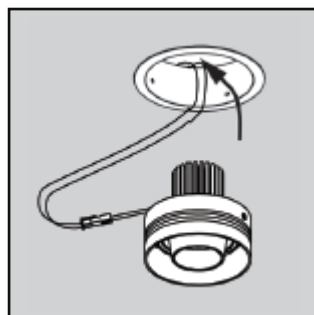
2. Finish ceiling face



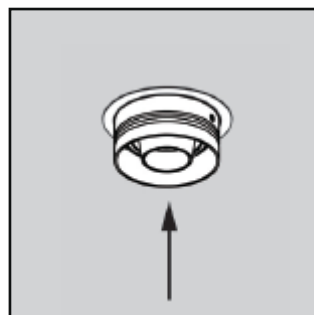
3. Trim kit installation



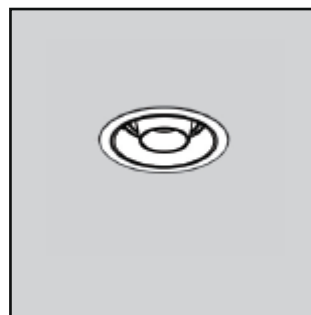
4. LED driver dropdown



5. Fixture wiring connection

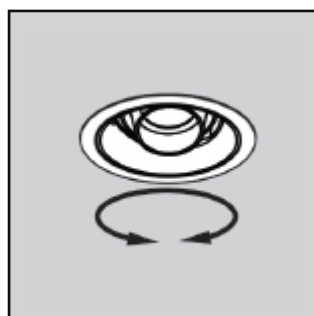


6. Install fixture.

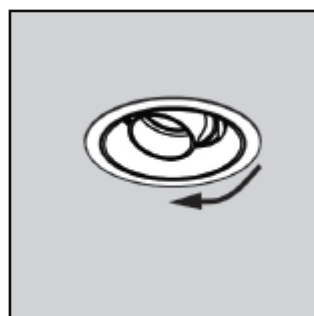


7. Finish installation.

### Axis Mini Adjustment



1. Adjust rotation.



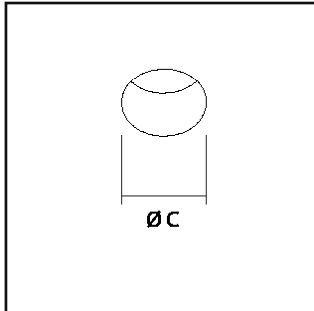
2. Adjust tilt.

## Installation Steps

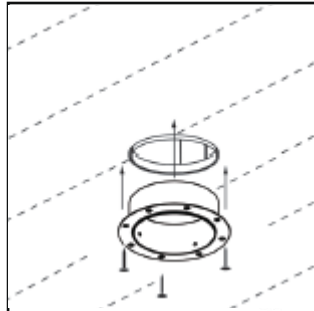


**TURN POWER OFF BEFORE INSPECTION, INSTALLATION OR REMOVAL!**

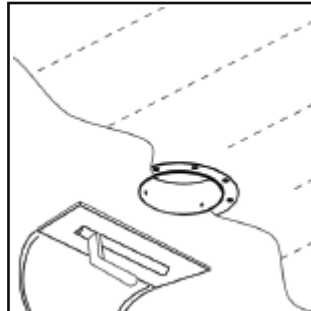
### Axis Mini Trimless (TL) Installation



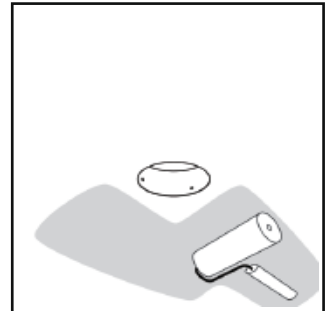
1. Create cutout C=Ø106mm



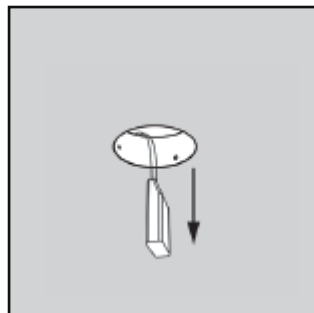
2. Trimless kit installation



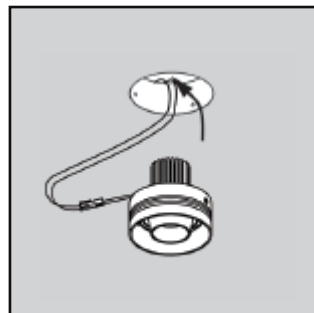
3. Plaster in and allow to dry fully



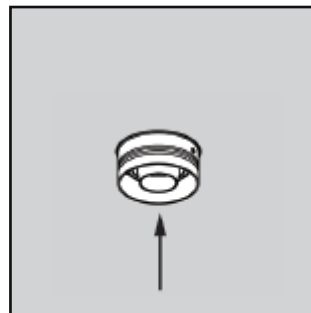
4. Paint and allow to dry fully



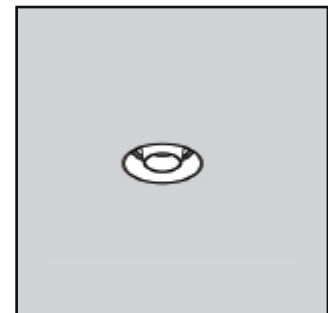
5. Fixture wiring connection



6. Fixture wiring connection

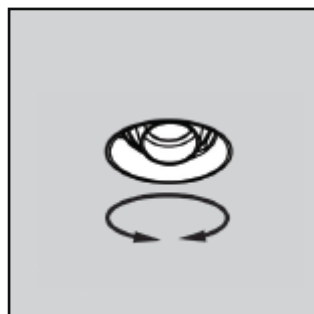


7. Install fixture.

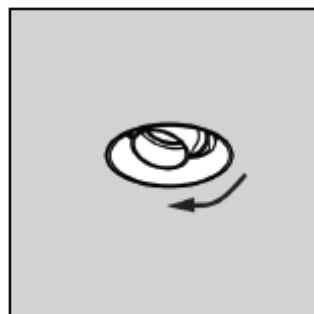


8. Finish Installation

### Axis Mini Adjustment

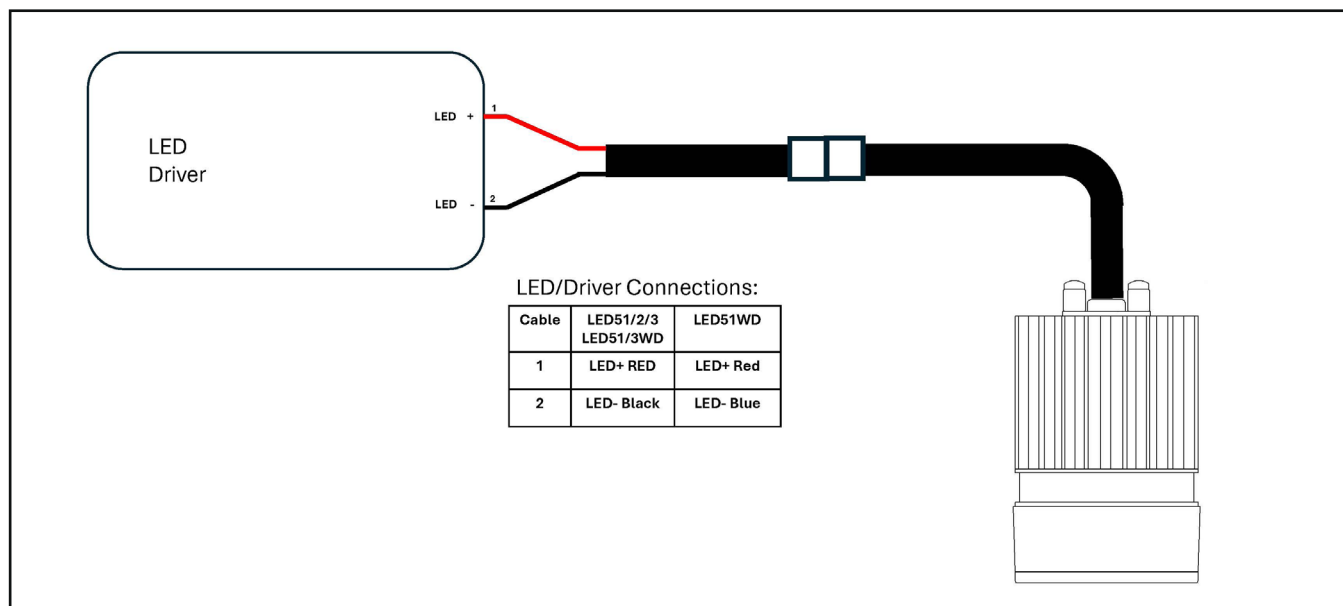


1. Adjust rotation.

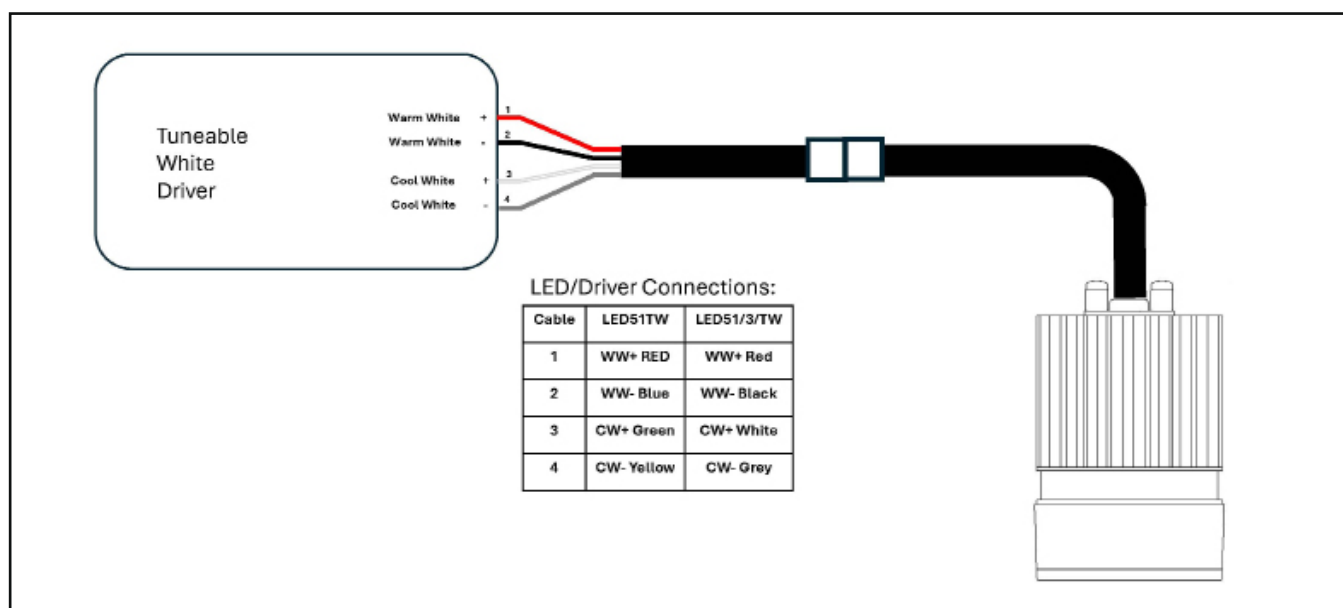


2. Adjust tilt.

## Remote Driver Wiring



## Tuneable White Remote Driver Wiring



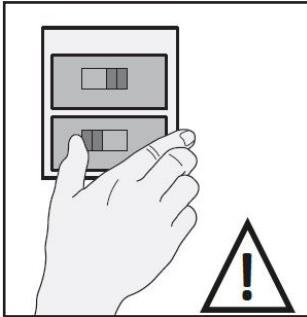
**ALL LED DRIVERS SUPPLIED BY LUCENT WILL BE PRE-WIRED WITH A LEAD THAT HAS THE CORRECT CONNECTOR TO MATCH THE LED MODULE USED. IF CONNECTORS ARE REMOVED, WARRANTY WILL BE VOID. IF THE DRIVER NEEDS TO BE REPLACED, OR CABLES EXTENDED REFER TO FOLLOWING WIRING DIAGRAMS.**



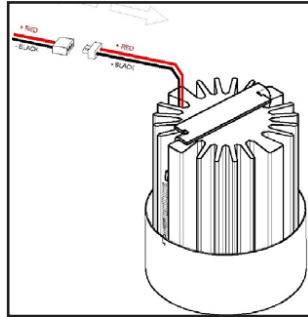
**TURN POWER OFF BEFORE INSPECTION, INSTALLATION OR REMOVAL!**

## ⚠ Servicing LED modules

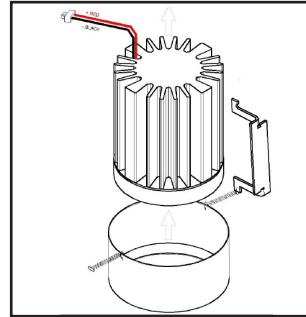
LUCENT LED MODULES ARE **NON-USER** REPLACEABLE. LED MODULES SHOULD ONLY BE REPLACED BY A QUALIFIED PERSON, THE MANUFACTURER OR A SIMILAR QUALIFIED PERSON.



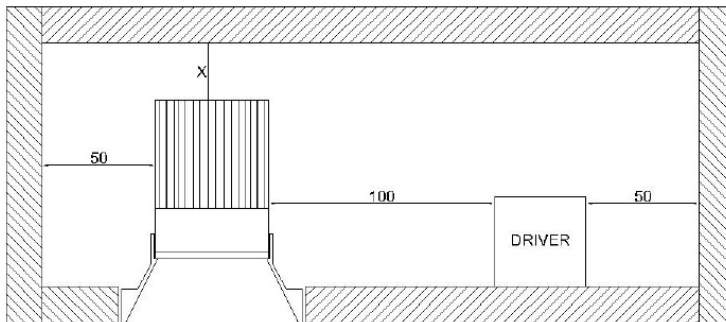
1. Switch off mains power.



2. Disconnect LED module from the driver.



3. Take off the fixing brace to free the LED module and remove it



### NOTES:

Leave the minimum distance detailed above around the luminaire and driver:

For LED35 modules X= min. 15mm

For LED51 modules X= min. 25mm

For LED71 modules X= min. 25mm

\*some driver and fitting combinations may require a bigger recess depth to install driver



**TURN POWER OFF BEFORE INSPECTION, INSTALLATION OR REMOVAL!**