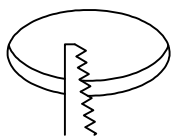
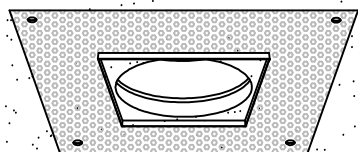


## Installation Instructions: Square Edge 60 - Square Edge 90 Square 90

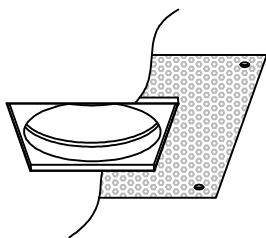


Cut hole as follows:	
60 Edge	90/Edge
60mmØ	83mmØ

PC = Flush trim with mesh plate for plaster installation.



Fit the PC installation trim into the hole, square up trim as required and fix the mesh plate to plasterboard with screws.  
(Recommended - for additional strength bond ring into the hole).



Skim plaster to the lip edge of the plaster ring.  
Make good and paint ceiling before installing luminaire body.

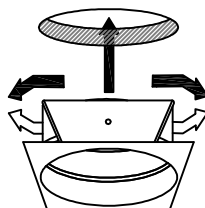


Installation ring is now ready for final installation.

PB = mounting ring for installation into existing ceilings, minimal visible trim



Make good and paint ceiling before installing PB Trim.



Fit the PB installation trim into the hole. Press spring blades toward the luminaire body and carefully insert into the ceiling cut-out.

Push the PB trim up until trim is flat against the finished ceiling, square up trim as required.  
(Recommended - for additional strength bond ring into the hole).

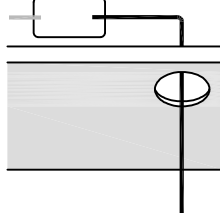


Installation ring is now ready for final installation.

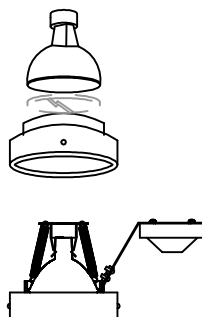
### MR - MH - GU versions:



Refer to instructions supplied with the transformer/control gear for connection details



Install control gear/transformer where applicable through the ceiling cut-out.  
Wire equipment according to the installation instructions provided/printed on the equipment to the terminal block mounted on fixtures bracket.  
(For GU10 versions please take mains supply directly to the terminal block on the luminaire).

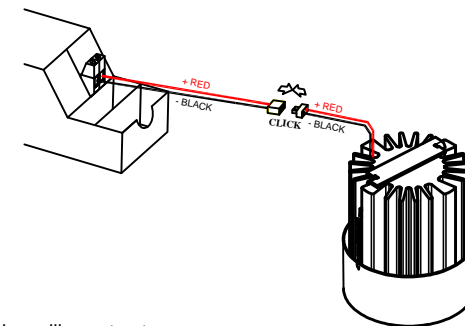
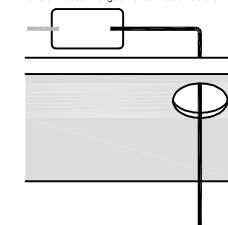


Insert any lenses/louvres into the lamp/accessory holder (clear safety glass is factory fitted in the lower position).  
Then install the lamp.  
Lamp retaining springs will hold everything in place.

Instructions applicable for the following luminaires:

### LED - XIC versions:

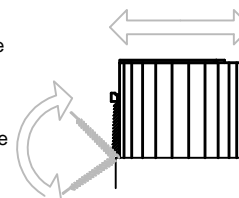
Refer to instructions supplied with the transformer/control gear for connection details



Install LED Drivers through the ceiling cut-out.  
Wire Primary and, if required, the dimming control input of the equipment according to the installation instructions provided/printed on the driver.  
Ensuring the driver is not energised, connect the LED lead to the flying lead from the driver.  
Observe the LED warning label attached to the modules cable.



LED modules will normally be factory fitted in the luminaire. However if the module needs to be removed from the fixture slide the LED brace to one side exposing the hook end of the spring.  
Detach the spring, remove the brace and remove the LED module from the luminaire. Reverse for re-assembly

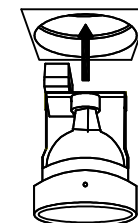


Instructions applicable for the following luminaires:

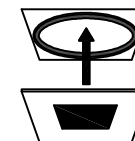
**Prospex Pinhole 60**  
MR11 version. Follow installation instructions as per Pinhole 90 MR fixtures as detailed.

For LED35 versions, please follow installation instructions for Pinhole 90 for LED above.

Please note depending on the driver/control gear used, installation through the cut out or installation kit may not be possible. Check driver manufacturers details for cable sizes and distances applicable.



Flush installation with PC ring



Fit front plate to the ceiling trim. Held in position by magnets.

Installation with PB ring minimal visible trim.



Installation is now complete.