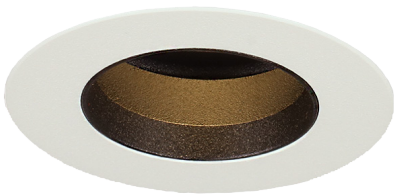
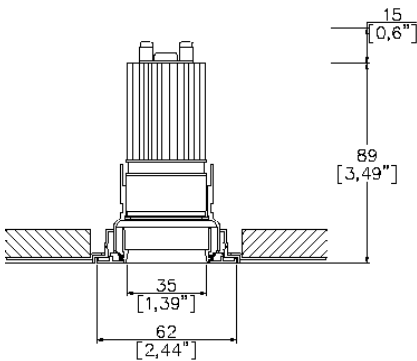


Mix60 Duo Fixed Trimless

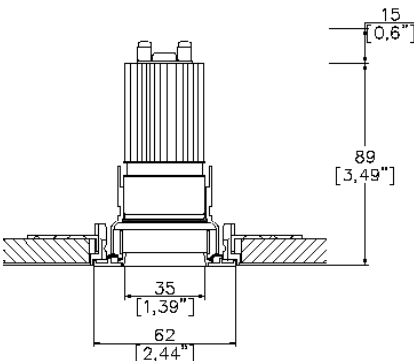
TM65.2	3kgCO2e
TM66	2.5 CEAM



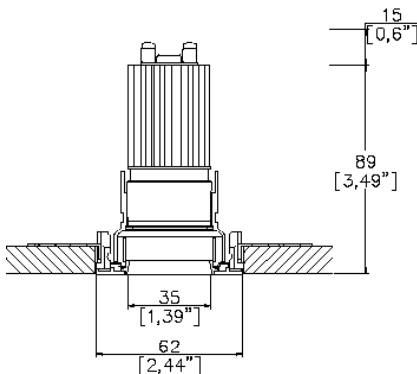
Ø62mm (2,44") overall trim, Ø35mm (1,39") aperture. Available with a standard trim kit or 3 flush trim options, depending on ceiling type and finish.



Mix60 Duo with Trimless Kit TL1 ⁽¹⁾ (front fitting, full skim)
Cut-out Ø 68mm
Required depth height + 15mm.



Mix60 Duo with Trimless Kit TL2 ⁽¹⁾ (rear fitting, partial skim)
Cut-out Ø 66mm
Required depth height + 15mm.



Mix60 Duo with Trimless Kit TL3 ⁽¹⁾ (rear fitting, solid ceiling)
Cut-out Ø 61mm
Required depth height + 15mm.

LED Source	LED35/3-WD		LED35/3-WD		LED35/3-WD	
CRI	≥90 CRI		≥90 CRI		≥90 CRI	
Drive Current	350mA		350mA		350mA	
Power inc Driver	7.4W		7.4W		7.4W	
Beam Angle	NF (21°)		FL (37°)		WFL (46°)	
Forward Volt	18V		18V		18V	
CCT	2700K	3000K	2700K	3000K	2700K	3000K
Delivered Lumens	489	540	458	513	407	452
Delivered Intensisty cd	2766	2935	1126	1208	645	684
Delivered Lumens per circuit watt	66	73	62	69	55	61

Note: Performance data is based on the Highest CCT of each module type.

Project Ref: _____ Location Ref: _____

Please only complete one of the following code builders

Non Fire Rated Code Builder

Fixture Order Code: - - - -

Fixture	_____
MX60000-DU	Mix60 Duo Fixed for LED
Installation ⁽¹⁾	_____
TL1	Trimless for Full Skim
TL2	Trimless for Partial Skim ceilings (12-16mm total thickness)
TL3	Trimless for Solid Ceilings (12-16mm total thickness)
TL4 ⁽²⁾	Trimless for Partial Skim ceilings (23-28mm total thickness)
TL5 ⁽²⁾	Trimless for Solid Ceilings (23-28mm total thickness)
Finish	_____
WH02	White RAL 9010
BK02	Black RAL 9005
RAL*	Custom RAL Colour*
ABR1	Antique Brass
ABZ1	Antique Bronze
PCH1	Polished Chrome
PNK1	Polished Nickel
PBR1	Polished Brass
IP Rating	_____
54	IP54
65	IP65
Rating	_____
0	No Fire Rating

Fire Rated Code Builder

Fixture Order Code: - - - -

Fixture	_____
MX60000-DU	Mix60 Duo Fixed for LED
Installation ⁽¹⁾	_____
TL1	Trimless for Full Skim
TL4 ⁽²⁾	Trimless for Partial Skim ceilings (23-28mm total thickness)
Finish	_____
WH02	White RAL 9010
BK02	Black RAL 9005
RAL*	Custom RAL Colour*
ABR1	Antique Brass
ABZ1	Antique Bronze
PCH1	Polished Chrome
PNK1	Polished Nickel
PBR1	Polished Brass
IP Rating	_____
54	IP54
65	IP65
Rating	_____
FR ⁽³⁾	Fire Rated

(1) For any ceiling thickness or construction type not shown please contact Lucent
(2) Adjustment may be limited in thicker ceiling constructions. Refer to installation instructions for details.
(3) Tested and approved to EN 1363-1:2020 and EN 1365-2:2014 for 60 minutes fire rating.

Project Ref:_____

Location Ref:_____

LED Order Code:

LED35/3-WD

-

-

LED
LED35/3-WD

LED35 Gen3 Ambiance WarmDim

CCT
2718
3018

2700K - 1800K
3000K - 1800K

Beam
NF
FL
WFL

Narrow Flood
Flood
Wide Flood

Driver Options:

Protocol
S
A
P
D
B

Non-Dim
Analogue (0-10v)
Phase
DALI
Bluetooth**

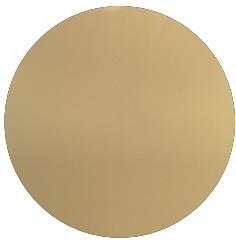
Finish selection



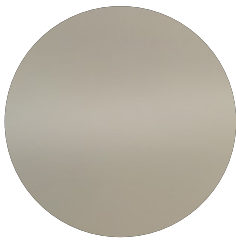
Antique Brass



Antique Bronze



Polished Brass



Polished Nickel



Polished Chrome

Accessories



Honeycomb Louvre



Diffusing Lens



Frosted Lens



Heavy Spread Lens



Linear Spread Lens

Accessories Order Code:

- Louvre/Lens
- LS45

LSDF

LSFR

LSLS

LSHS
- Honeycomb Louvre

Diffusing Lens

Frosted Lens

Linear Spread Lens

Heavy Spread Lens

Technical Details

*Custom RAL code must be specified. Custom RAL colours can increase prices and lead times

Dimming. Whilst Lucent can offer the majority of its luminaires with various dimming options, it remains the responsibility of the specifier/installer to check and ensure compatibility of any control equipment used. Additional cabling may be required depending on the dimming protocol specified.

**Bluetooth (wireless) is the communication method. The exact dimming protocol must be confirmed to allow the selection of suitable drivers or bluetooth devices.

^ Depth indicated is the minimum recess depth for the luminaire with a remote mounted LED driver. Installing a driver through either the luminaire cut-out or installation kit may require additional recess depth, please refer to the relevant luminaire installation instructions for further details.Data correct at time of publishing

First Fix Requirement. Luminaire comprised of fixture body with ceiling trim and installation kit, which is to be fitted into the ceiling once finished. Ensure correct alignment of the installation kit before final assembly (see luminaire instllation instructions for details)

IP Rating. Tested from underside of the ceiling

Note that the picture of the finishes provided is for illustrative purposes only. The finishes may vary in colour, texture and appearance. Contact Lucent lighting Ltd for more information.

It is the policy of Lucent Lighting to continually review and improve its products and therefore reserve the right to change any details of product or withdraw specifications without prior notice.

Luminaires designed to comply with EN60598 and all other standards.

This specification sheet superseded all previous versions.

All intellectual property rights pertaining to the product described above and to this document are owned by or licensed to Lucent Lighting Ltd.

We reserve the right to take whatever action is necessary to protect those intellectual property rights.