

## Light efficiency:

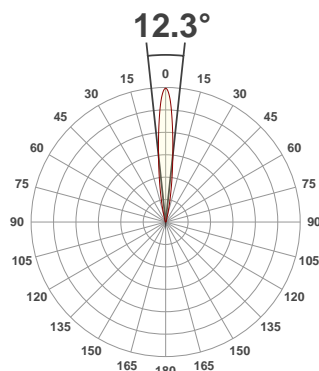
**73 Lumen/Watt**

## Light quality:

**CRI: 92.3**

## Color temperature:

**3000 K**



## Product name:

**Soft 70 Fixed - LED51 GEN2,  
3000K, 12°, 350mA**

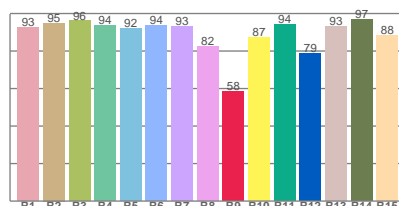
## Item number:

**070-LED51/2-30-12-350mA**

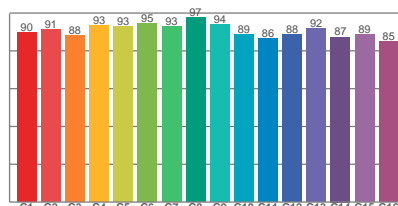
**Delivered information for above  
fixture and LED combination.**

**Output: 987 Lumen Peak intensity: 12665 cd Power consumption: 13.6**

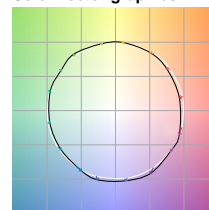
## CRI R values



## TM30 C Values

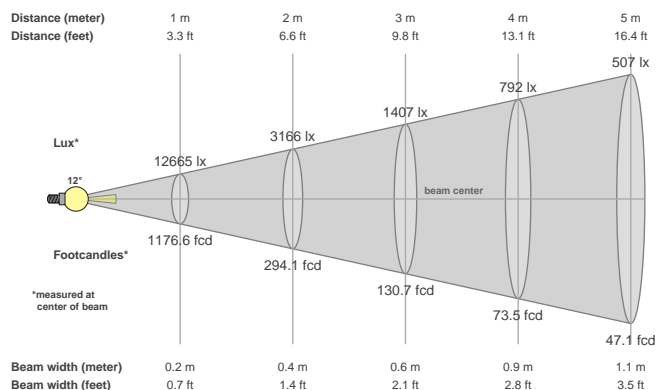


## Color vector graphics



Color temperature	Color rendering index	Red component	Color fidelity	Color gamut	Color quality scale	Color coordinate cie 1931	Color coordinate cie 1931	Color coordinate	Color coordinate	Color deviation from black body
CCT	CRI	CRI R9	TM30 Rf	TM30 Rg	CQS	x	y	u	v	Δuv
3000 K	92.3	58.4	90.7	99.7	90.7	0.437	0.404	0.250	0.348	0.0008

## Beam details



## Beam angels

Beam angle 50%	Field angle 10%	Cutoff angle 2,5%
12.3°	25.9°	39.2°

## Beam intensities

Peak intensity	Int. ratio in 120° cone	Int. ratio in 90° cone
12665 cd	97.7%	95.4%

## Beam intensities from 1-20m

1m	2m	3m	4m	5m	6m	7m	8m	9m	10m	11m	12m	13m	14m	15m	16m	17m	18m	19m	20m
3.3ft	6.6ft	9.8ft	13.1ft	16.4ft	19.7ft	23ft	26.2ft	29.5ft	32.8ft	36.1ft	39.4ft	42.7ft	45.9ft	49.2ft	52.5ft	55.8ft	59.1ft	62.3ft	65.6ft
12665lx	3166lx	1407lx	792lx	507lx	352lx	258lx	198lx	156lx	127lx	105lx	88lx	75lx	65lx	56lx	49lx	44lx	39lx	35lx	32lx
1176.6fcd	294.1fcd	130.7fcd	73.5fcd	47.1fcd	32.7fcd	24fcd	18.4fcd	14.5fcd	11.8fcd	9.7fcd	8.2fcd	7fcd	6fcd	5.2fcd	4.6fcd	4.1fcd	3.6fcd	3.3fcd	2.9fcd

The above information is for 3000K colour temperature, for specific module information please see LED spec located on our website

For information regarding other colour temperatures please use the following factors for lumen output and candelas:

2700K = 1

4000K = 1.084