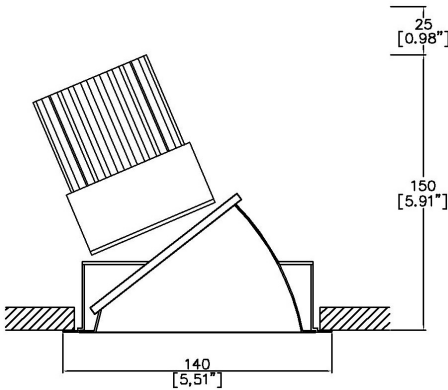


# ProSpex 140 Wallwash



140mm (5.51”) overall diameter. Available with standard trim kit or plaster-in kit for flush appearance. Family of matching products also available. Required depth height + 25mm^



140-LED-WW

LED Source	LED71	LED71
CCT	3000K	3000K
Drive Current	700mA	700mA
Power inc Driver	27W	27W
Beam Angle	34°	34°
Tilt Angle	0°	30°
Delivered Lumens	948	1066
Delivered Intensisty cd	1380	1504
Efficacy lm/w	35	39
Forward Volt	33V	33V
CRI	≥90 CRI	≥90 CRI

Project Ref: \_\_\_\_\_ Location Ref: \_\_\_\_\_

Fixture Order Code:  -  -  -  -

Fixture	140-LED-WW	Reflector140 Wallwash with LED71
Reflector Finish		
PS		Polished Silver
SS		Satin Silver
CG		Champagne Gold
BK		Black
WH		White
Trim Finish		
WH		White
BK		Black
RAL		Custom RAL Colour*
IP Rating	44	IP44
Emergency		
E		Maintained 3hr Emergency
ED		Maintained 3hr DALI Self Test
ES		Maintained 3hr Self Test

LED Order Code:  -  -  -

LED	LED71	LED70 ONE
CCT		
927		90 CRI 2700K
930		90 CRI 3000K
940		90 CRI 4000K
Beam	34	34°
Protocol		
S		Non-Dim
A		Analogue (0-10v)
P		Phase
D		DALI
B		Bluetooth**



Honeycomb Louvre



Warm Tone

Accessories Order Code:

Louvre/Lens

- MD45 Honeycomb Louvre
- MDCC Warm Tone Lens
- MDUV UV Lens

Technical Details

\*Custom RAL code must be specified. Custom RAL colours can increase prices and lead times

Dimming. Whilst Lucent can offer the majority of its luminaires with various dimming options, it remains the responsibility of the specifier/installer to check and ensure compatibility of any control equipment used. Additional cabling may be required depending on the dimming protocol specified.

\*\*Bluetooth (wireless) is the communication method. The exact dimming protocol must be confirmed to allow the selection of suitable drivers or bluetooth devices.

^ Depth indicated is the minimum recess depth for the luminaire with a remote mounted LED driver. Installing a driver through either the luminaire cut-out or installation kit may require additional recess depth, please refer to the relevant luminaire installation instructions for further details. Data correct at time of publishing

First Fix Requirement. Luminaire comprised of fixture body with ceiling trim and installation kit, which is to be fitted into the ceiling once finished. Ensure correct alignment of the installation kit before final assembly (see luminaire installation instructions for details)

IP Rating. Tested from underside of the ceiling

It is the policy of Lucent Lighting to continually review and improve its products and therefore reserve the right to change any details of product or withdraw specifications without prior notice.

Luminaires designed to comply with EN60598 and all other standards.

This specification sheet supersedes all previous versions.

All intellectual property rights pertaining to the product described above and to this document are owned by or licensed to Lucent Lighting Ltd.

We reserve the right to take whatever action is necessary to protect those intellectual property rights.

Please notify Lucent Lighting Ltd of any inaccuracies immediately. E&OE

## Light efficiency:

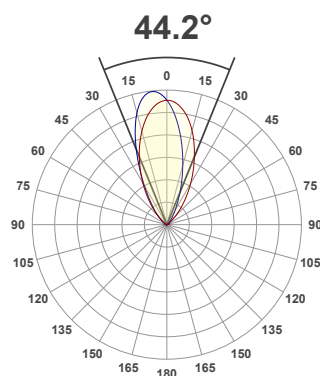
**35 Lumen/Watt**

## Light quality:

**CRI: 87.7**

## Color temperature:

**3000 K**



## Product name:

**140-LED-WW-0° Tilt-SS - LED71-30-38-700mA**

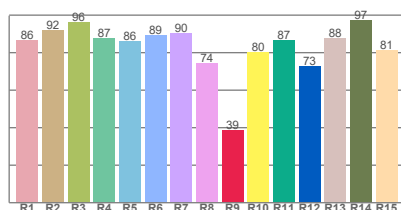
## Item number:

**ProSpex 140 Wallwash - LED71-30-38-700mA**

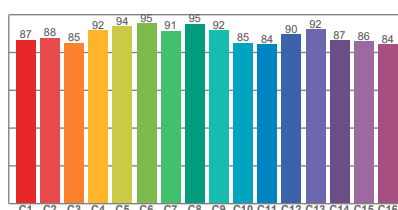
**Delivered information for above fixture and LED combination.**

**Output: 948 Lumen    Peak intensity: 1380 cd    Power consumption: 27.0**

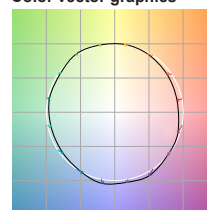
CRI R values



TM30 C Values

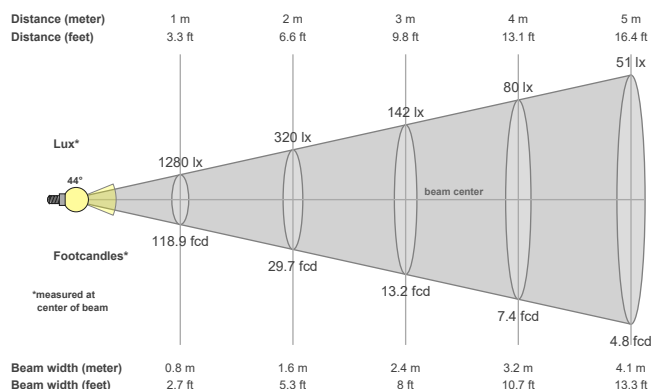


Color vector graphics



Color temperature	Color rendering index	Red component	Color fidelity	Color gamut	Color quality scale	Color coordinate cie 1931	Color coordinate cie 1931	Color coordinate	Color coordinate	Color deviation from black body
CCT	CRI	CRI R9	TM30 Rf	TM30 Rg	CQS	x	y	u	v	Δuv
3000 K	87.7	38.8	89.1	97.7	87.2	0.437	0.404	0.244	0.347	0.0021

## Beam details



## Beam angels

Beam angle 50%	Field angle 10%	Cutoff angle 2,5%
44.2°	82.9°	106.7°

## Beam intensities

Peak intensity	Int. ratio in 120° cone	Int. ratio in 90° cone
1380 cd	96.5%	90.2%

## Beam intensities from 1-20m

1m	2m	3m	4m	5m	6m	7m	8m	9m	10m	11m	12m	13m	14m	15m	16m	17m	18m	19m	20m
3.3ft	6.6ft	9.8ft	13.1ft	16.4ft	19.7ft	23ft	26.2ft	29.5ft	32.8ft	36.1ft	39.4ft	42.7ft	45.9ft	49.2ft	52.5ft	55.8ft	59.1ft	62.3ft	65.6ft
1280lx	320lx	142lx	80lx	51lx	36lx	26lx	20lx	16lx	13lx	11lx	9lx	8lx	7lx	6lx	5lx	4lx	4lx	4lx	3lx
118.9fcd	29.7fcd	13.2fcd	7.4fcd	4.8fcd	3.3fcd	2.4fcd	1.9fcd	1.5fcd	1.2fcd	1fcd	0.8fcd	0.7fcd	0.6fcd	0.5fcd	0.5fcd	0.4fcd	0.4fcd	0.3fcd	0.3fcd

The above information is for 3000K colour temperature, for specific module information please see LED spec located on our website

For information regarding other colour temperatures please use the following factors for lumen output and candelas:

2700K = 1  
4000K = 1.084

## Light efficiency:

**39 Lumen/Watt**

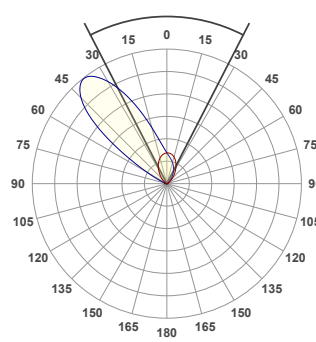
## Light quality:

**CRI: 87.8**

## Color temperature:

**3000 K**

**54.4°**



## Product name:

**140-LED-WW-30° Tilt-SS - LED71-30-38-700mA**

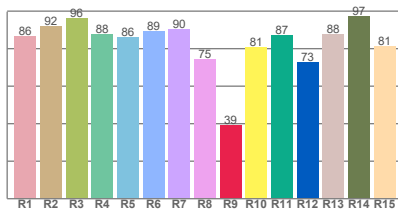
## Item number:

**ProSpex 140 Wallwash - LED71-30-38-700mA**

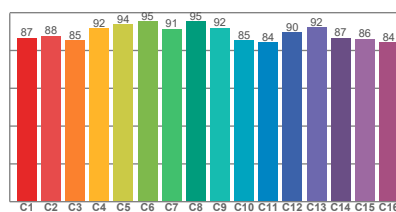
**Delivered information for above fixture and LED combination.**

**Output: 1066 Lumen    Peak intensity: 1504 cd    Power consumption: 27.0**

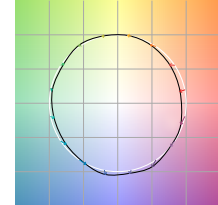
CRI R values



TM30 C Values

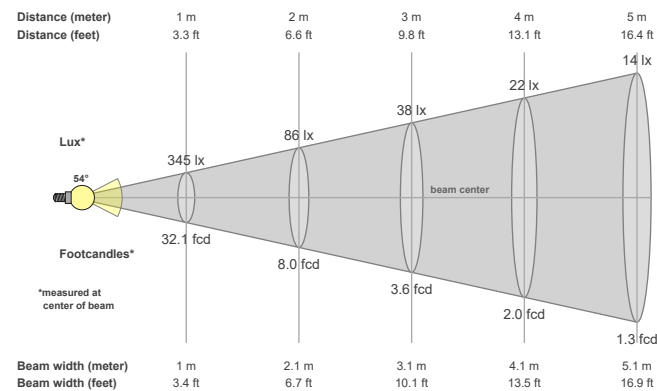


Color vector graphics



Color temperature	Color rendering index	Red component	Color fidelity	Color gamut	Color quality scale	Color coordinate cie 1931	Color coordinate cie 1931	Color coordinate	Color coordinate	Color diviation from black body
CCT	CRI	CRI R9	TM30 Rf	TM30 Rg	CQS	x	y	u	v	Δuv
3000 K	87.8	39.1	89.1	97.7	87.3	0.437	0.404	0.244	0.347	0.0020

## Beam details



## Beam angels

Beam angle 50%	Field angle 10%	Cutoff angle 2,5%
54.4°	104.2°	135°

## Beam intensities

Peak intensity	Int. ratio in 120° cone	Int. ratio in 90° cone
1504 cd	95.4%	69.5%

## Beam intensities from 1-20m

1m	2m	3m	4m	5m	6m	7m	8m	9m	10m	11m	12m	13m	14m	15m	16m	17m	18m	19m	20m
3.3ft	6.6ft	9.8ft	13.1ft	16.4ft	19.7ft	23ft	26.2ft	29.5ft	32.8ft	36.1ft	39.4ft	42.7ft	45.9ft	49.2ft	52.5ft	55.8ft	59.1ft	62.3ft	65.6ft
345lx	86lx	38lx	22lx	14lx	10lx	7lx	5lx	4lx	3lx	3lx	2lx	2lx	2lx	2lx	1lx	1lx	1lx	1lx	1lx
32.1fcd	8fcd	3.6fcd	2fcd	1.3fcd	0.9fcd	0.7fcd	0.5fcd	0.4fcd	0.3fcd	0.3fcd	0.2fcd	0.2fcd	0.2fcd	0.1fcd	0.1fcd	0.1fcd	0.1fcd	0.1fcd	0.1fcd

The above information is for 3000K colour temperature, for specific module information please see LED spec located on our website

For information regarding other colour temperatures please use the following factors for lumen output and candelas:

2700K = 1

4000K = 1.084