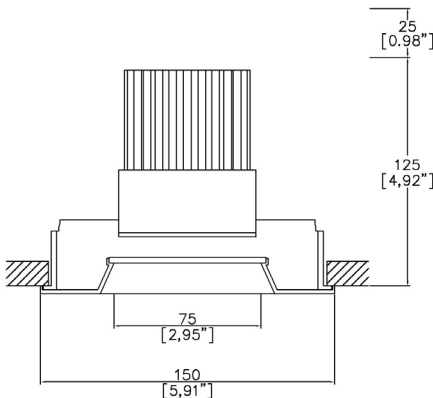


ProSpex Plus XL Bevel Fixed Trim



150mm (5.90") overall trim diameter. Available with standard trim kit or plaster-in kit for flush appearance. Family of matching products also available. Required depth height + 25mm^



090+XL-13-LED-TR
Cut-out 142mm Ø

LED Source	LED71	LED71	LED71
CCT	3000K	3000K	3000K
Drive Current	700mA	700mA	700mA
Power inc Driver	27W	27W	27W
Beam Angle	12°	19°	34°
Delivered Lumens	1900	1644	1692
Delivered Intensisty cd	25531	11577	4676
Efficacy lm/w	70	61	62
Forward Volt	33V	33V	33V
CRI	≥90 CRI	≥90 CRI	≥90 CRI

Project Ref: _____

Location Ref: _____

Fixture Order Code: 090+XL-13-LED-TR - - -

Fixture

090+XL-13-LED-TR

Plus XL Bevel Fixed Trim with LED71

Finish

WH

BK

RAL

White

Black

Custom RAL Colour*

IP Rating

44

IP44

Emergency

E

ED

ES

Maintained 3hr Emergency

Maintained 3hr DALI Self Test

Maintained 3hr Self Test



LED Order Code: LED71 - - -

LED

LED71

LED70 ONE

CCT

927

930

940

90 CRI 2700K

90 CRI 3000K

90 CRI 4000K

Beam

12

19

34

12°

19°

34°

Protocol

S

A

P

D

B

Non-Dim

Analogue (0-10v)

Phase

DALI

Bluetooth**



Honeycomb Louvre



Diffusing Lens



Frosted Lens



Heavy Spread Lens



Linear Spread Lens



Warm Tone

Accessories Order Code:

- Louvre/Lens
- Honeycomb Louvre
- Warm Tone Lens
- UV Lens
- Diffusing Lens
- Frosted Lens
- Linear Spread Lens
- Heavy Spread Lens

Technical Details

*Custom RAL code must be specified. Custom RAL colours can increase prices and lead times

Dimming. Whilst Lucent can offer the majority of its luminaires with various dimming options, it remains the responsibility of the specifier/installer to check and ensure compatibility of any control equipment used. Additional cabling may be required depending on the dimming protocol specified.

**Bluetooth (wireless) is the communication method. The exact dimming protocol must be confirmed to allow the selection of suitable drivers or bluetooth devices.

^ Depth indicated is the minimum recess depth for the luminaire with a remote mounted LED driver. Installing a driver through either the luminaire cut-out or installation kit may require additional recess depth, please refer to the relevant luminaire installation instructions for further details.Data correct at time of publishing

First Fix Requirement. Luminaire comprised of fixture body with ceiling trim and installation kit, which is to be fitted into the ceiling once finished. Ensure correct alignment of the installation kit before final assembly (see luminaire instllation instructions for details)

IP Rating. Tested from underside of the ceiling

It is the policy of Lucent Lighting to continually review and improve its products and therefore reserve the right to change any details of product or withdraw specifications without prior notice.

Luminaires designed to comply with EN60598 and all other standards.

This specification sheet superseded all previous versions.

All intellectual property rights pertaining to the product described above and to this document are owned by or licensed to Lucent Lighting Ltd.

We reserve the right to take whatever action is necessary to protect those intellectual property rights.

Please notify Lucent Lighting Ltd of any inaccuracies immediately. E&OE

Light efficiency:

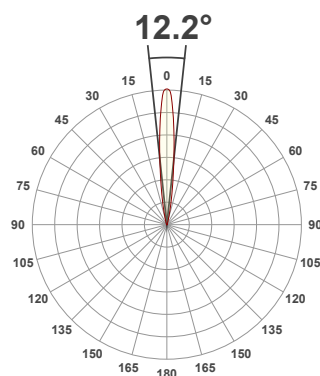
70 Lumen/Watt

Light quality:

CRI: 90.0

Color temperature:

3000 K



Product name:

090+XL-13-LED - LED71-30-12-700mA

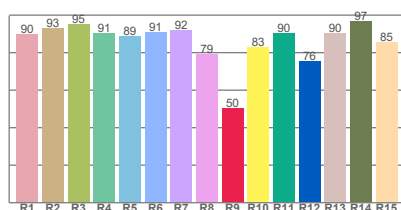
Item number:

Plus XL Bevel Fixed - LED71-30-12-700mA

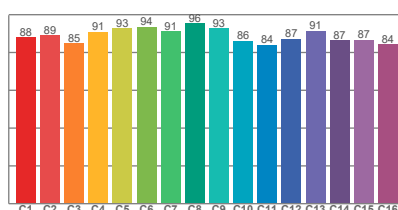
Delivered information for above fixture and LED combination.

Output: 1900 Lumen Peak intensity: 25531 cd Power consumption: 27.0

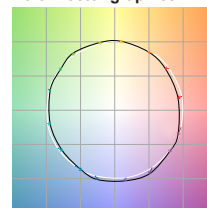
CRI R values



TM30 C Values

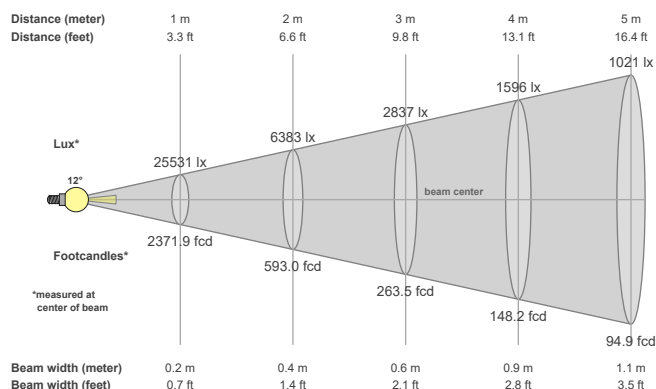


Color vector graphics



Color temperature	Color rendering index	Red component	Color fidelity	Color gamut	Color quality scale	Color coordinate cie 1931	Color coordinate cie 1931	Color coordinate	Color coordinate	Color diviation from black body
CCT	CRI	CRI R9	TM30 Rf	TM30 Rg	CQS	x	y	u	v	Δuv
3000 K	90.0	50.5	89.0	99.4	88.7	0.437	0.404	0.249	0.348	0.0010

Beam details



Beam angels

Beam angle 50%	Field angle 10%	Cutoff angle 2,5%
12.2°	25.1°	37.1°

Beam intensities

Peak intensity	Int. ratio in 120° cone	Int. ratio in 90° cone
25531 cd	99.5%	97.6%

Beam intensities from 1-20m

1m	2m	3m	4m	5m	6m	7m	8m	9m	10m	11m	12m	13m	14m	15m	16m	17m	18m	19m	20m
3.3ft	6.6ft	9.8ft	13.1ft	16.4ft	19.7ft	23ft	26.2ft	29.5ft	32.8ft	36.1ft	39.4ft	42.7ft	45.9ft	49.2ft	52.5ft	55.8ft	59.1ft	62.3ft	65.6ft
25531lx	6383lx	2837lx	1596lx	1021lx	709lx	521lx	399lx	315lx	255lx	211lx	177lx	151lx	130lx	113lx	100lx	88lx	79lx	71lx	64lx
2371.9fcd	593fcd	263.5fcd	148.2fcd	94.9fcd	65.9fcd	48.4fcd	37.1fcd	29.3fcd	23.7fcd	19.6fcd	16.5fcd	14fcd	12.1fcd	10.5fcd	9.3fcd	8.2fcd	7.3fcd	6.6fcd	5.9fcd

The above information is for 3000K colour temperature, for specific module information please see LED spec located on our website

For information regarding other colour temperatures please use the following factors for lumen output and candelas:

2700K = 1
4000K = 1.084

Light efficiency:

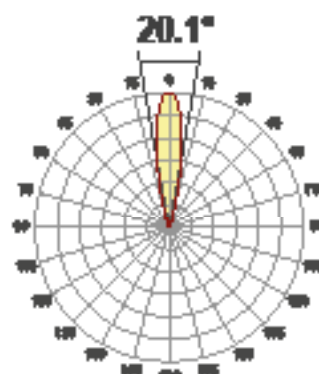
61 Lumen/Watt

Light quality:

CRI: 90.3

Color temperature:

3000 K



Product name:

090-XL-13-LED -
LED71-30-19-700mA

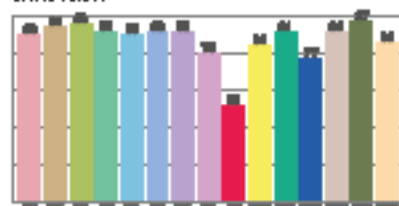
Item number:

Plus XL Bevel Fixed -
LED71-30-19-700mA

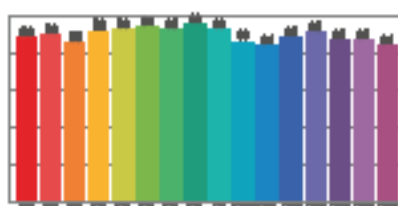
Delivered information for above
fixture and LED combination.

Output: 1644 Lumen Peak intensity: 11577 cd Power consumption: 27.0

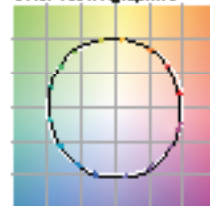
CRI values



TM30 C values

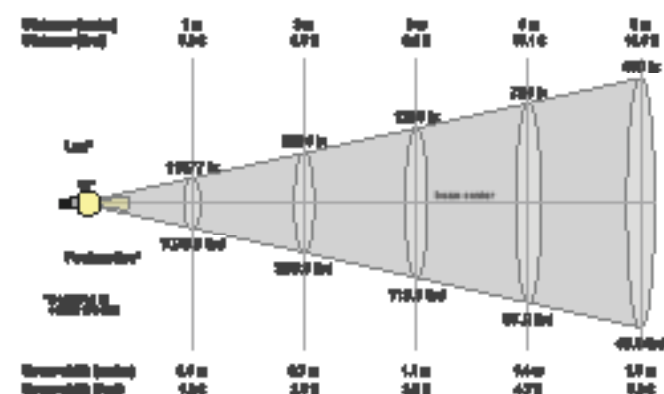


Color vector graphics



Color-render	Color-render	Color-render	Color-render	Color-render	Color-render	Color-render	Color-render	Color-render	Color-render	Color-render
OCT	CRI	CRI R9	TM30 R17	TM30 R99	CRI	X	Y	Z	V	Sum
3000 K	90.3	61.2	39.3	89.2	90.3	0.437	0.404	0.248	0.348	0.898

Beam spread



Beam angle

Beam angle 50%	Field angle 50%	Cutoff angle 2.0%
20.1°	20.1°	46.1°

Beam intensity

Peak intensity	Int. ratio to 120° beam	Int. ratio to 60° beam
11577 cd	88.3%	87.4%

Beam intensities from 1-20m

1m	2m	3m	4m	5m	6m	7m	8m	9m	10m	11m	12m	13m	14m	15m	16m	17m	18m	19m	20m
3.3ft	6.6ft	9.8ft	13.1ft	16.4ft	19.7ft	23ft	26.2ft	29.5ft	32.8ft	36.1ft	39.4ft	42.7ft	45.9ft	49.2ft	52.5ft	55.8ft	59.1ft	62.3ft	65.6ft
11577lx	2894lx	1286lx	724lx	463lx	322lx	236lx	181lx	143lx	116lx	96lx	80lx	69lx	59lx	51lx	45lx	40lx	36lx	32lx	29lx
1075.5fcd	268.9fcd	119.5fcd	67.2fcd	43fcd	29.9fcd	21.9fcd	16.8fcd	13.3fcd	10.8fcd	8.9fcd	7.5fcd	6.4fcd	5.5fcd	4.8fcd	4.2fcd	3.7fcd	3.3fcd	3fcd	2.7fcd

The above information is for 3000K colour temperature, for specific module information please see LED spec located on our website

For information regarding other colour temperatures please use the following factors for lumen output and candelas:

2700K = 1

4000K = 1.084

Light efficiency:

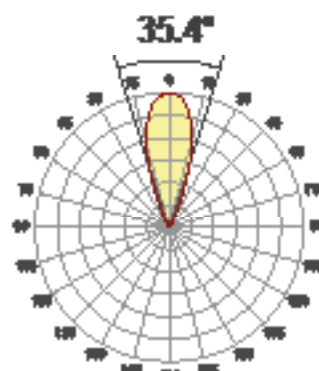
62 Lumen/Watt

Light quality:

CRI: 90.0

Color temperature:

3050 K



Product name:

090-XL-13-LED -
LED71-30-34-700mA

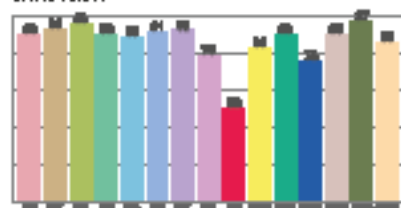
Item number:

Plus XL Bevel Fixed -
LED71-30-34-700mA

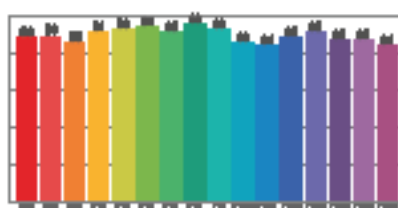
Delivered information for above
fixture and LED combination.

Output: 1632 Lumen Peak intensity: 4676 cd Power consumption: 27.4

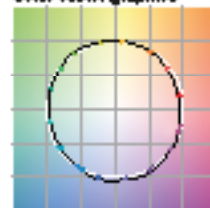
CRI values



TM30 C values

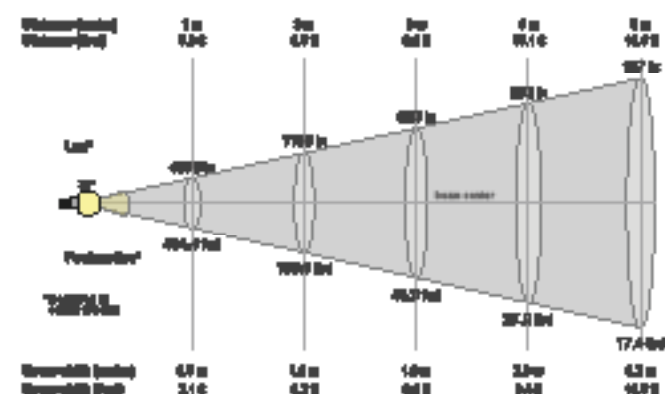


Color vector graphics



Color view	Color view	Color view	Color view	Color view	Color view	Color view	Color view	Color view	Color view	Color view
OCT	CRI	CRI	TM30 C1	TM30 C2	CRI	X	Y	Z	U	V
3000 K	90.0	90.0	90.0	90.0	90.0	0.435	0.408	0.248	0.348	0.0011

Beam details



Beam angle

Beam angle 50%	Field angle 50%	Cutoff angle 2.0%
35.4°	52°	78.4°

Beam Intensity

Peak Intensity	Int. ratio to 120° beam	Int. ratio to 60° beam
4676 cd	88.5%	87.3%

Beam intensities from 1-20m

1m	2m	3m	4m	5m	6m	7m	8m	9m	10m	11m	12m	13m	14m	15m	16m	17m	18m	19m	20m
3.3ft	6.6ft	9.8ft	13.1ft	16.4ft	19.7ft	23ft	26.2ft	29.5ft	32.8ft	36.1ft	39.4ft	42.7ft	45.9ft	49.2ft	52.5ft	55.8ft	59.1ft	62.3ft	65.6ft
4676lx	1169lx	520lx	292lx	187lx	130lx	95lx	73lx	58lx	47lx	39lx	32lx	28lx	24lx	21lx	18lx	16lx	14lx	13lx	12lx
434.4cd	108.6cd	48.3cd	27.2cd	17.4cd	12.1cd	8.9cd	6.8cd	5.4cd	4.3cd	3.6cd	3cd	2.6cd	2.2cd	1.9cd	1.7cd	1.5cd	1.3cd	1.2cd	1.1cd

The above information is for 3000K colour temperature, for specific module information please see LED spec located on our website

For information regarding other colour temperatures please use the following factors for lumen output and candelas:

2700K = 1

4000K = 1.084