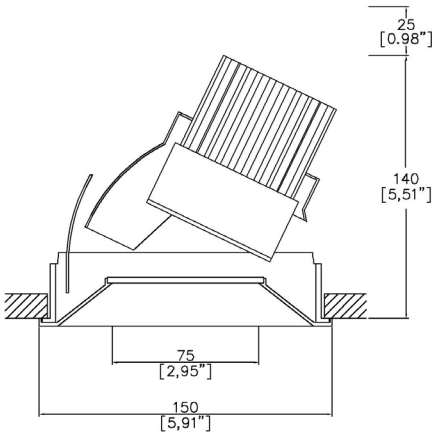


ProSpex Plus XL Conical Accent Trim



150mm (5.90") overall trim diameter. 360° rotation. Up to 45° tilt. Available with standard trim kit or plaster-in kit for flush appearance. Family of matching products also available. Required depth height + 25mm^



093+XL-LED-TR
Cut-out 142mm Ø

LED Source	LED71	LED71	LED71
CCT	3000K	3000K	3000K
Drive Current	700mA	700mA	700mA
Power inc Driver	27W	27W	27W
Beam Angle	12°	19°	34°
Delivered Lumens	1874	1434	1640
Delivered Intensisty cd	25141	10199	4444
Efficacy lm/w	69	53	61
Forward Volt	33V	33V	33V
CRI	≥90 CRI	≥90 CRI	≥90 CRI

Project Ref: _____

Location Ref: _____

Fixture Order Code:

093+XL-LED-TR

Fixture

093+XL-LED-TR

Plus XL Conical Accent Trim with LED71

Finish

WH

BK

RAL

White

Black

Custom RAL Colour*

IP Rating

44

IP44

Emergency

E

ED

ES

Maintained 3hr Emergency

Maintained 3hr DALI Self Test

Maintained 3hr Self Test



LED Order Code:

LED71

LED

LED71

LED70 ONE

CCT

927

930

940

90 CRI 2700K

90 CRI 3000K

90 CRI 4000K

Beam

12

19

34

12°

19°

34°

Protocol

S

A

P

D

B

Non-Dim

Analogue (0-10v)

Phase

DALI

Bluetooth**



Honeycomb Louvre



Diffusing Lens



Frosted Lens



Heavy Spread Lens



Linear Spread Lens



Warm Tone

Accessories Order Code:

Louvre/Lens

- | | |
|------|--------------------|
| MN71 | Honeycomb Louvre |
| MDCC | Warm Tone Lens |
| MDUV | UV Lens |
| MDDF | Diffusing Lens |
| MDFR | Frosted Lens |
| MDLS | Linear Spread Lens |
| MDHS | Heavy Spread Lens |

Technical Details

*Custom RAL code must be specified. Custom RAL colours can increase prices and lead times

Dimming. Whilst Lucent can offer the majority of its luminaires with various dimming options, it remains the responsibility of the specifier/installer to check and ensure compatibility of any control equipment used. Additional cabling may be required depending on the dimming protocol specified.

**Bluetooth (wireless) is the communication method. The exact dimming protocol must be confirmed to allow the selection of suitable drivers or bluetooth devices.

^ Depth indicated is the minimum recess depth for the luminaire with a remote mounted LED driver. Installing a driver through either the luminaire cut-out or installation kit may require additional recess depth, please refer to the relevant luminaire installation instructions for further details.Data correct at time of publishing

First Fix Requirement. Luminaire comprised of fixture body with ceiling trim and installation kit, which is to be fitted into the ceiling once finished. Ensure correct alignment of the installation kit before final assembly (see luminaire installation instructions for details)

IP Rating. Tested from underside of the ceiling

It is the policy of Lucent Lighting to continually review and improve its products and therefore reserve the right to change any details of product or withdraw specifications without prior notice.

Luminaires designed to comply with EN60598 and all other standards.

This specification sheet superseded all previous versions.

All intellectual property rights pertaining to the product described above and to this document are owned by or licensed to Lucent Lighting Ltd.

We reserve the right to take whatever action is necessary to protect those intellectual property rights.

Please notify Lucent Lighting Ltd of any inaccuracies immediately. E&OE

Light efficiency:

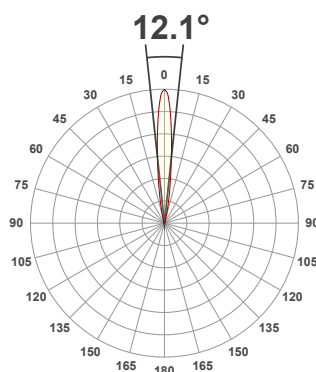
69 Lumen/Watt

Light quality:

CRI: 90.0

Color temperature:

3000 K



Product name:

093+XL-LED - LED71-30-12-700mA

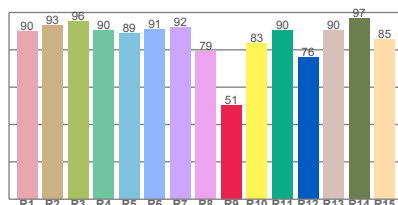
Item number:

Plus XL Conical Accent - LED71-30-12-700mA

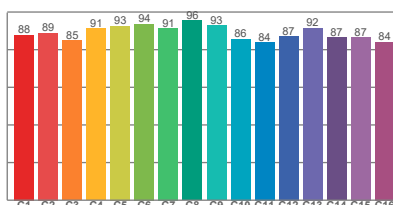
Delivered information for above fixture and LED combination.

Output: 1874 Lumen Peak intensity: 25141 cd Power consumption: 27.0

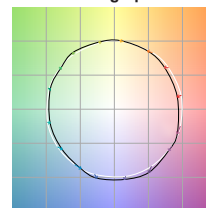
CRI R values



TM30 C Values

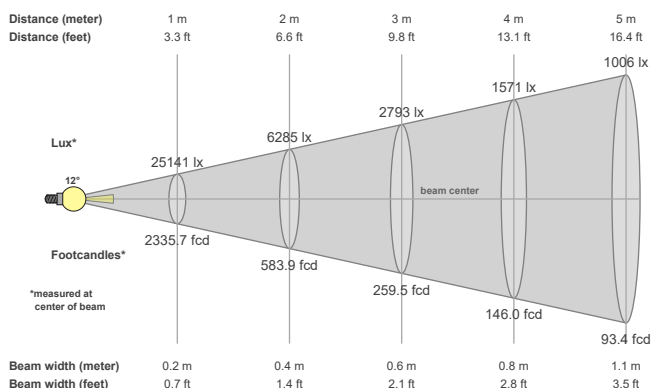


Color vector graphics



Color temperature	Color rendering index	Red component	Color fidelity	Color gamut	Color quality scale	Color coordinate cie 1931	Color coordinate cie 1931	Color coordinate	Color coordinate	Color deviation from black body
CCT	CRI	CRI R9	TM30 Rf	TM30 Rg	CQS	x	y	u	v	Δuv
3000 K	90.0	50.6	89.1	99.3	88.7	0.437	0.404	0.249	0.348	0.0008

Beam details



Beam angles

Beam angle 50%	Field angle 10%	Cutoff angle 2,5%
12.1°	25.2°	37.1°

Beam intensities

Peak intensity	Int. ratio in 120° cone	Int. ratio in 90° cone
25141 cd	99.5%	97.0%

Beam intensities from 1-20m

1m	2m	3m	4m	5m	6m	7m	8m	9m	10m	11m	12m	13m	14m	15m	16m	17m	18m	19m	20m
3.3ft	6.6ft	9.8ft	13.1ft	16.4ft	19.7ft	23ft	26.2ft	29.5ft	32.8ft	36.1ft	39.4ft	42.7ft	45.9ft	49.2ft	52.5ft	55.8ft	59.1ft	62.3ft	65.6ft
25141lx	6285lx	2793lx	1571lx	1006lx	698lx	513lx	393lx	310lx	251lx	208lx	175lx	149lx	128lx	112lx	98lx	87lx	78lx	70lx	63lx
2335.7fcd	583.9fcd	259.5fcd	146fcd	93.4fcd	64.9fcd	47.7fcd	36.5fcd	28.8fcd	23.4fcd	19.3fcd	16.2fcd	13.8fcd	11.9fcd	10.4fcd	9.1fcd	8.1fcd	7.2fcd	6.5fcd	5.8fcd

The above information is for 3000K colour temperature, for specific module information please see LED spec located on our website

For information regarding other colour temperatures please use the following factors for lumen output and candelas:

2700K = 1
4000K = 1.084

Light efficiency:

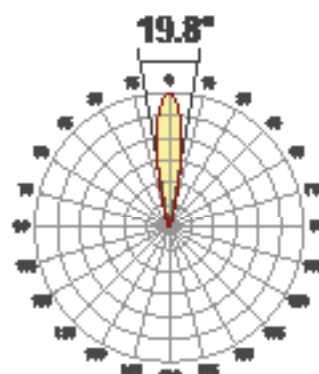
53 Lumen/Watt

Light quality:

CRI: 90.3

Color temperature:

3000 K



Product name:

093-XL-LED -
LED71-30-19-700mA

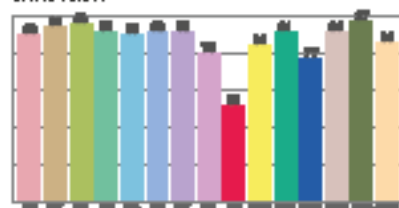
Item number:

Plus XL Conical Accent -
LED71-30-19-700mA

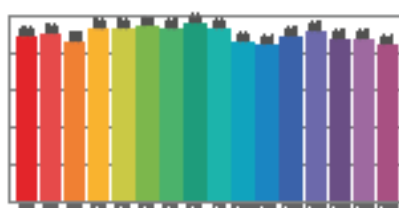
Delivered information for above
fixture and LED combination.

Output: 1434 Lumen Peak intensity: 10199 cd Power consumption: 27.0

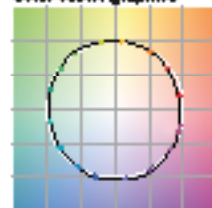
CRI values



TM30 C values

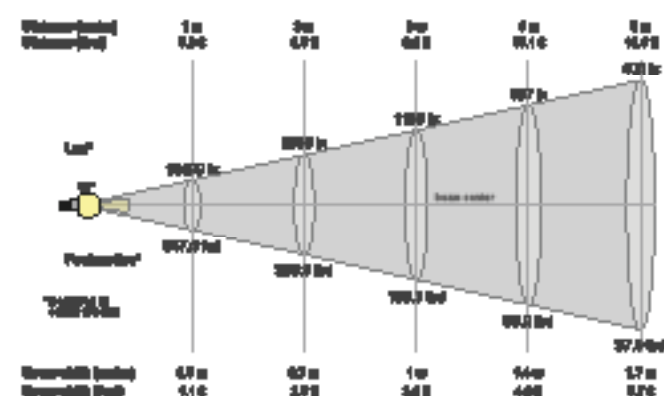


Color vector graphics



Color-render	Color-render	Color-render	Color-render	Color-render	Color-render	Color-render	Color-render	Color-render	Color-render	Color-render
OCT	CRI	CRI	TM30 Rf	TM30 Rg	CRI	x	y	u	v	Sum
3000 K	90.3	90.3	90.3	90.3	90.3	0.437	0.404	0.248	0.348	0.0000

Beam details



Beam angle

Beam angle 50%	Field angle 50%	Cutoff angle 2.0%
19.8°	29.2°	46.2°

Beam intensities

Peak intensity	Int. ratio to 120° beam	Int. ratio to 60° beam
10199 cd	90.3%	87.2%

Beam intensities from 1-20m

1m	2m	3m	4m	5m	6m	7m	8m	9m	10m	11m	12m	13m	14m	15m	16m	17m	18m	19m	20m
3.3ft	6.6ft	9.8ft	13.1ft	16.4ft	19.7ft	23ft	26.2ft	29.5ft	32.8ft	36.1ft	39.4ft	42.7ft	45.9ft	49.2ft	52.5ft	55.8ft	59.1ft	62.3ft	65.6ft
10199lx	2550lx	1133lx	637lx	408lx	283lx	208lx	159lx	126lx	102lx	84lx	71lx	60lx	52lx	45lx	40lx	35lx	31lx	28lx	25lx
947.5cd	236.9cd	105.3cd	59.2cd	37.9cd	26.3cd	19.3cd	14.8cd	11.7cd	9.5cd	7.8cd	6.6cd	5.6cd	4.8cd	4.2cd	3.7cd	3.3cd	2.9cd	2.6cd	2.4cd

The above information is for 3000K colour temperature, for specific module information please see LED spec located on our website

For information regarding other colour temperatures please use the following factors for lumen output and candelas:

2700K = 1

4000K = 1.084

Light efficiency:

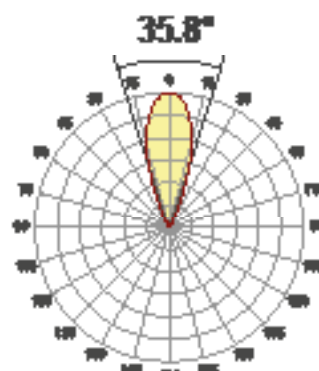
61 Lumen/Watt

Light quality:

CRI: 90.0

Color temperature:

3000 K



Product name:

093+XL-LED -
LED71-30-34-700mA

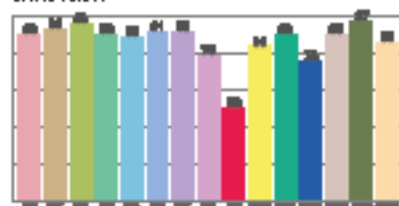
Item number:

Plus XL Conical Accent -
LED71-30-34-700mA

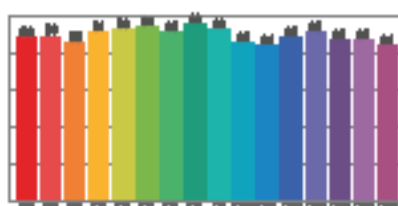
Delivered information for above
fixture and LED combination.

Output: 1640 Lumen Peak intensity: 4444 cd Power consumption: 27.0

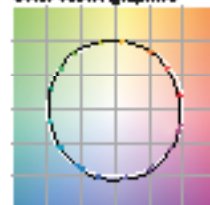
CRI values



TM30 C values

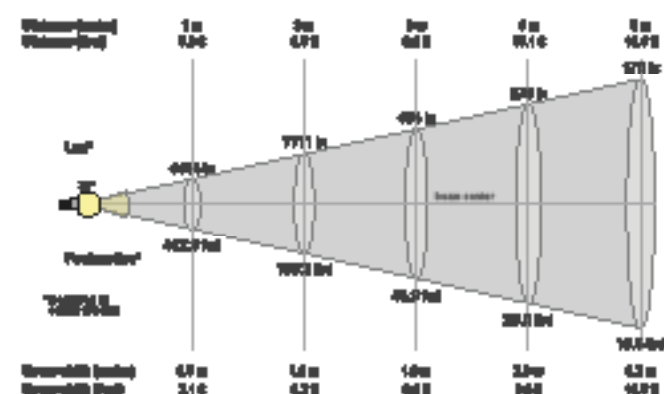


Color vector graphics



Color-rendering	Color-rendering	Color-rendering	Color-rendering	Color-rendering	Color-rendering	Color-rendering	Color-rendering	Color-rendering	Color-rendering	Color-rendering
CCT	CRI	CRI R9	TM30 R1	TM30 R2	CRI	X	Y	Z	U	V
3000 K	90.0	90.0	90.0	90.0	90.0	0.437	0.404	0.240	0.240	0.070

Beam spread



Beam spread

Beam angle 50%	Field angle 50%	Cut-off angle 2.0%
35.8°	52.2°	7.0°

Beam intensity

Peak intensity	Int. ratio to 120° beam	Int. ratio to 60° beam
4444 cd	90.4%	90.4%

Beam intensities from 1-20m

1m	2m	3m	4m	5m	6m	7m	8m	9m	10m	11m	12m	13m	14m	15m	16m	17m	18m	19m	20m
3.3ft	6.6ft	9.8ft	13.1ft	16.4ft	19.7ft	23ft	26.2ft	29.5ft	32.8ft	36.1ft	39.4ft	42.7ft	45.9ft	49.2ft	52.5ft	55.8ft	59.1ft	62.3ft	65.6ft
4444lx	1111lx	494lx	278lx	178lx	123lx	91lx	69lx	55lx	44lx	37lx	31lx	26lx	23lx	20lx	17lx	15lx	14lx	12lx	11lx
412.9cd	103.2cd	45.9cd	25.8cd	16.5cd	11.5cd	8.4cd	6.5cd	5.1cd	4.1cd	3.4cd	2.9cd	2.4cd	2.1cd	1.8cd	1.6cd	1.4cd	1.3cd	1.1cd	1cd

The above information is for 3000K colour temperature, for specific module information please see LED spec located on our website

For information regarding other colour temperatures please use the following factors for lumen output and candelas:

2700K = 1

4000K = 1.084