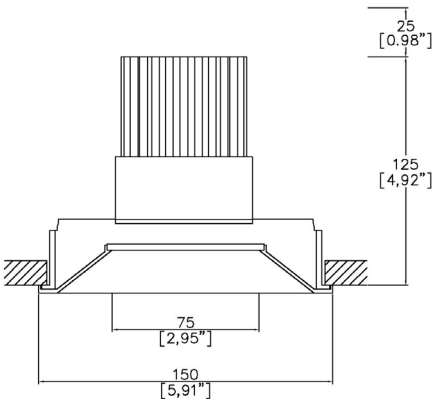


ProSpex Plus XL Conical Fixed Trim



150mm (5.90") overall trim diameter. Available with standard trim kit or plaster-in kit for flush appearance. Family of matching products also available. Required depth height + 25mm^



090+XL-LED-TR
Cut-out 142mm Ø

LED Source	LED71	LED71	LED71
CCT	3000K	3000K	3000K
Drive Current	700mA	700mA	700mA
Power inc Driver	27W	27W	27W
Beam Angle	12°	19°	34°
Delivered Lumens	1949	1741	1807
Delivered Intensisty cd	24598	11564	4705
Efficacy lm/w	72	64	67
Forward Volt	33V	33V	33V
CRI	≥90 CRI	≥90 CRI	≥90 CRI

Project Ref: _____

Location Ref: _____

Fixture Order Code:

090+XL-LED-TR

Fixture

090+XL-LED-TR

Plus XL Conical Fixed Trim with LED71

Finish

WH

BK

RAL

White

Black

Custom RAL Colour*

IP Rating

44

IP44

Emergency

E

ED

ES

Maintained 3hr Emergency

Maintained 3hr DALI Self Test

Maintained 3hr Self Test



LED Order Code:

LED71

LED

LED71

LED70 ONE

CCT

927

930

940

90 CRI 2700K

90 CRI 3000K

90 CRI 4000K

Beam

12

19

34

12°

19°

34°

Protocol

S

A

P

D

B

Non-Dim

Analogue (0-10v)

Phase

DALI

Bluetooth**



Honeycomb Louvre



Diffusing Lens



Frosted Lens



Heavy Spread Lens



Linear Spread Lens



Warm Tone

Accessories Order Code:

Louvre/Lens

- | | |
|------|--------------------|
| MN71 | Honeycomb Louvre |
| MDCC | Warm Tone Lens |
| MDUV | UV Lens |
| MDDF | Diffusing Lens |
| MDFR | Frosted Lens |
| MDLS | Linear Spread Lens |
| MDHS | Heavy Spread Lens |

Technical Details

*Custom RAL code must be specified. Custom RAL colours can increase prices and lead times

Dimming. Whilst Lucent can offer the majority of its luminaires with various dimming options, it remains the responsibility of the specifier/installer to check and ensure compatibility of any control equipment used. Additional cabling may be required depending on the dimming protocol specified.

**Bluetooth (wireless) is the communication method. The exact dimming protocol must be confirmed to allow the selection of suitable drivers or bluetooth devices.

^ Depth indicated is the minimum recess depth for the luminaire with a remote mounted LED driver. Installing a driver through either the luminaire cut-out or installation kit may require additional recess depth, please refer to the relevant luminaire installation instructions for further details.Data correct at time of publishing

First Fix Requirement. Luminaire comprised of fixture body with ceiling trim and installation kit, which is to be fitted into the ceiling once finished. Ensure correct alignment of the installation kit before final assembly (see luminaire installation instructions for details)

IP Rating. Tested from underside of the ceiling

It is the policy of Lucent Lighting to continually review and improve its products and therefore reserve the right to change any details of product or withdraw specifications without prior notice.

Luminaires designed to comply with EN60598 and all other standards.

This specification sheet superseded all previous versions.

All intellectual property rights pertaining to the product described above and to this document are owned by or licensed to Lucent Lighting Ltd.

We reserve the right to take whatever action is necessary to protect those intellectual property rights.

Please notify Lucent Lighting Ltd of any inaccuracies immediately. E&OE

Light efficiency:

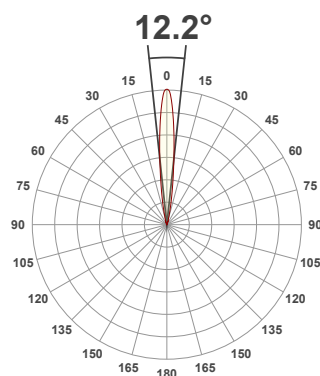
72 Lumen/Watt

Light quality:

CRI: 90.0

Color temperature:

3000 K



Product name:

090+XL-LED - LED71-30-12-700mA

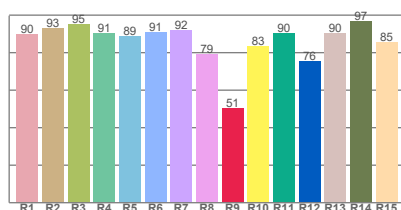
Item number:

Plus XL Conical Fixed - LED71-30-12-700mA

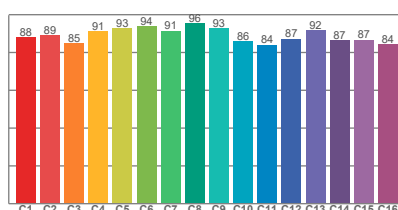
Delivered information for above fixture and LED combination.

Output: 1949 Lumen Peak intensity: 24598 cd Power consumption: 27.0

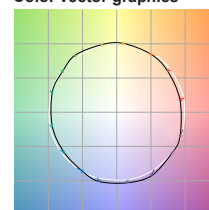
CRI R values



TM30 C Values

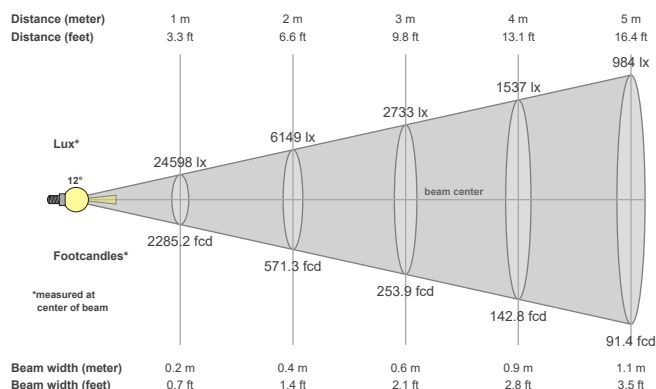


Color vector graphics



Color temperature	Color rendering index	Red component	Color fidelity	Color gamut	Color quality scale	Color coordinate cie 1931	Color coordinate cie 1931	Color coordinate	Color coordinate	Color diviation from black body
CCT	CRI	CRI R9	TM30 Rf	TM30 Rg	CQS	x	y	u	v	Δuv
3000 K	90.0	50.6	89.1	99.3	88.8	0.437	0.404	0.249	0.348	0.0009

Beam details



Beam angels

Beam angle 50%	Field angle 10%	Cutoff angle 2,5%
12.2°	25.2°	37.5°

Beam intensities

Peak intensity	Int. ratio in 120° cone	Int. ratio in 90° cone
24598 cd	98.6%	93.9%

Beam intensities from 1-20m

1m	2m	3m	4m	5m	6m	7m	8m	9m	10m	11m	12m	13m	14m	15m	16m	17m	18m	19m	20m
3.3ft	6.6ft	9.8ft	13.1ft	16.4ft	19.7ft	23ft	26.2ft	29.5ft	32.8ft	36.1ft	39.4ft	42.7ft	45.9ft	49.2ft	52.5ft	55.8ft	59.1ft	62.3ft	65.6ft
24598lx	6149lx	2733lx	1537lx	984lx	683lx	502lx	384lx	304lx	246lx	203lx	171lx	146lx	125lx	109lx	96lx	85lx	76lx	68lx	61lx
2285.2fcd	571.3fcd	253.9fcd	142.8fcd	91.4fcd	63.5fcd	46.6fcd	35.7fcd	28.2fcd	22.9fcd	18.9fcd	15.9fcd	13.5fcd	11.7fcd	10.2fcd	8.9fcd	7.9fcd	7.1fcd	6.3fcd	5.7fcd

The above information is for 3000K colour temperature, for specific module information please see LED spec located on our website

For information regarding other colour temperatures please use the following factors for lumen output and candelas:

2700K = 1
4000K = 1.084

Light efficiency:

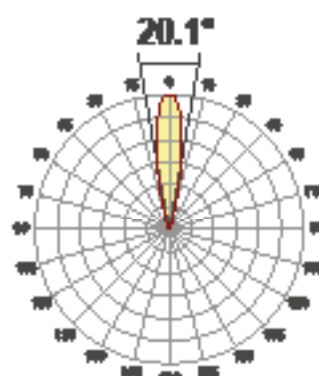
64 Lumen/Watt

Light quality:

CRI: 90.3

Color temperature:

3000 K



Product name:

090-XL-LED -
LED71-30-19-700mA

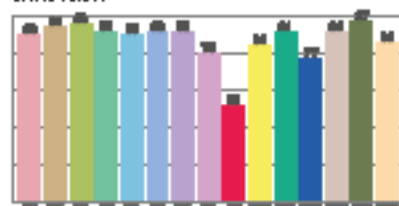
Item number:

Plus XL Conical Fixed -
LED71-30-19-700mA

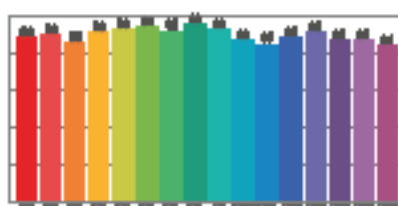
Delivered information for above
fixture and LED combination.

Output: 1741 Lumen Peak intensity: 11564 cd Power consumption: 27.0

CRI values



TM30 C values

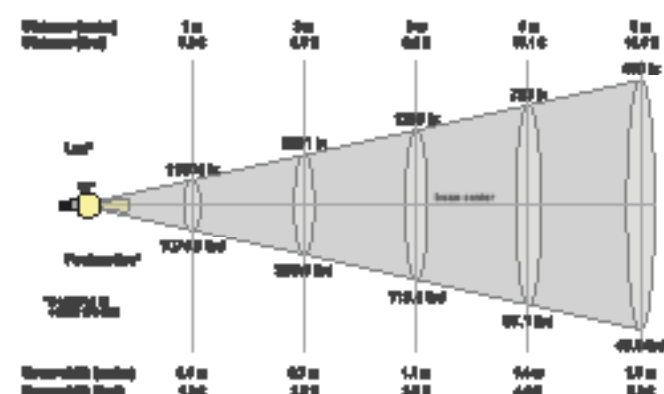


Color vector graphics



Color-render	Color-render	Color-render	Color-render	Color-render	Color-render	Color-render	Color-render	Color-render	Color-render	Color-render
OCT	CRI	CRI R9	TM30 R17	TM30 R99	CRI	X	Y	Z	U	V
3000 K	90.3	61.1	39.3	59.2	90.3	0.437	0.404	0.262	0.348	0.399

Beam details



Beam angle

Beam angle 50%	Field angle 50%	Cutoff angle 2.0%
20.1°	20.1°	45.4°

Beam intensities

Peak intensity	Int. ratio to 120° beam	Int. ratio to 60° beam
11564 cd	87.8%	83.3%

Beam intensities from 1-20m

1m	2m	3m	4m	5m	6m	7m	8m	9m	10m	11m	12m	13m	14m	15m	16m	17m	18m	19m	20m
3.3ft	6.6ft	9.8ft	13.1ft	16.4ft	19.7ft	23ft	26.2ft	29.5ft	32.8ft	36.1ft	39.4ft	42.7ft	45.9ft	49.2ft	52.5ft	55.8ft	59.1ft	62.3ft	65.6ft
11564lx	2891lx	1285lx	723lx	463lx	321lx	236lx	181lx	143lx	116lx	96lx	80lx	68lx	59lx	51lx	45lx	40lx	36lx	32lx	29lx
1074.3f cd	268.6f cd	119.4f cd	67.1f cd	43f cd	29.8f cd	21.9f cd	16.8f cd	13.3f cd	10.7f cd	8.9f cd	7.5f cd	6.4f cd	5.5f cd	4.8f cd	4.2f cd	3.7f cd	3.3f cd	3f cd	2.7f cd

The above information is for 3000K colour temperature, for specific module information please see LED spec located on our website

For information regarding other colour temperatures please use the following factors for lumen output and candelas:

2700K = 1

4000K = 1.084

Light efficiency:

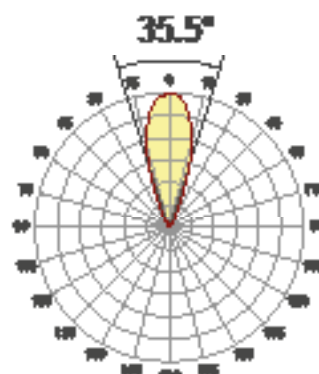
67 Lumen/Watt

Light quality:

CRI: 89.9

Color temperature:

3000 K



Product name:

090+XL-LED -
LED71-30-34-700mA

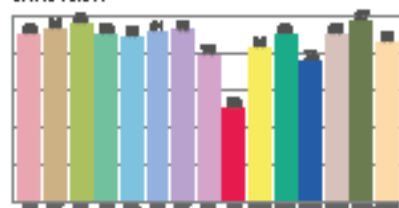
Item number:

Plus XL Conical Fixed -
LED71-30-34-700mA

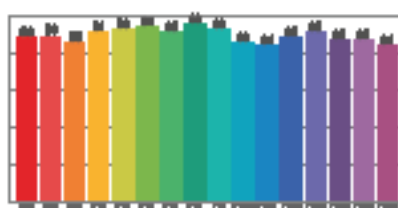
Delivered information for above
fixture and LED combination.

Output: 1807 Lumen Peak intensity: 4705 cd Power consumption: 27.0

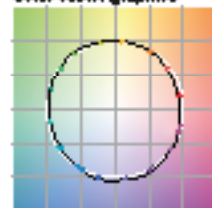
CRI values



TM30 C values

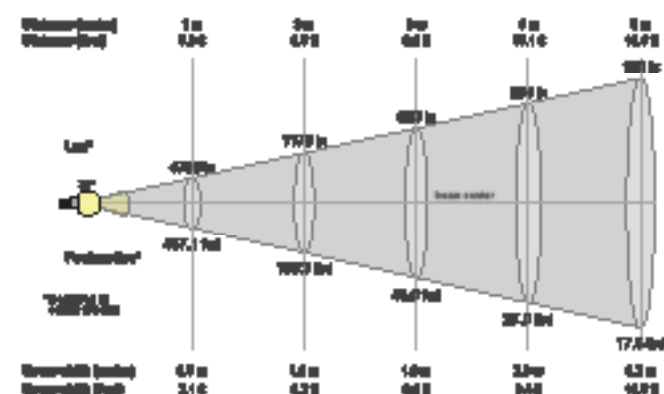


Color vector graphics



Color-render	Color-render	Color-render	Color-render	Color-render	Color-render	Color-render	Color-render	Color-render	Color-render	Color-render
OCT	CRI	CRI	TM30 Rf	TM30 Rg	CRI	x	y	u	v	Sum
3000 K	89.9	89.1	90.1	89.2	89.8	0.437	0.404	0.248	0.348	0.8971

Beam details



Beam angle

Beam angle 50%	Field angle 50%	Cutoff angle 2.0%
35.5°	62.7°	88.8°

Beam Intensity

Peak intensity	Int. ratio to 120° beam	Int. ratio to 60° beam
4705 cd	88.3%	88.3%

Beam intensities from 1-20m

1m	2m	3m	4m	5m	6m	7m	8m	9m	10m	11m	12m	13m	14m	15m	16m	17m	18m	19m	20m
3.3ft	6.6ft	9.8ft	13.1ft	16.4ft	19.7ft	23ft	26.2ft	29.5ft	32.8ft	36.1ft	39.4ft	42.7ft	45.9ft	49.2ft	52.5ft	55.8ft	59.1ft	62.3ft	65.6ft
4705lx	1176lx	523lx	294lx	188lx	131lx	96lx	74lx	58lx	47lx	39lx	33lx	28lx	24lx	21lx	18lx	16lx	15lx	13lx	12lx
437.1fc d	109.3fc d	48.6fc d	27.3fc d	17.5fc d	12.1fc d	8.9fc d	6.8fc d	5.4fc d	4.4fc d	3.6fc d	3fc d	2.6fc d	2.2fc d	1.9fc d	1.7fc d	1.5fc d	1.3fc d	1.2fc d	1.1fc d

The above information is for 3000K colour temperature, for specific module information please see LED spec located on our website

For information regarding other colour temperatures please use the following factors for lumen output and candelas:

2700K = 1

4000K = 1.084