

Light efficiency:

59 Lumen/Watt

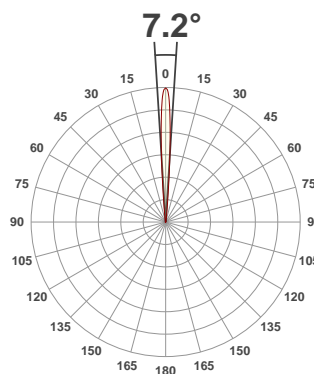
Light quality:

CRI: 91.9

Color temperature:

3000 K

Output: 395 Lumen Peak intensity: 16877 cd Power consumption: 6.7



Product name:

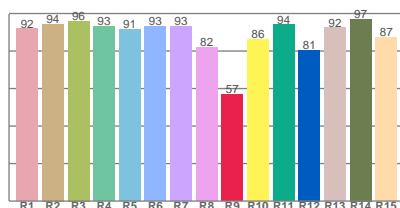
**Plus Mini Conical Accent -
LED51 SuperSpot, 3000K, 7°,
500mA**

Item number:

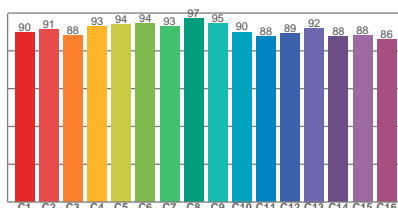
753+LED51SS-30-7-500mA

**Delivered information for
above fixture and LED
combination.**

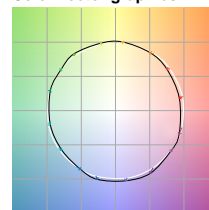
CRI R values



TM30 C Values

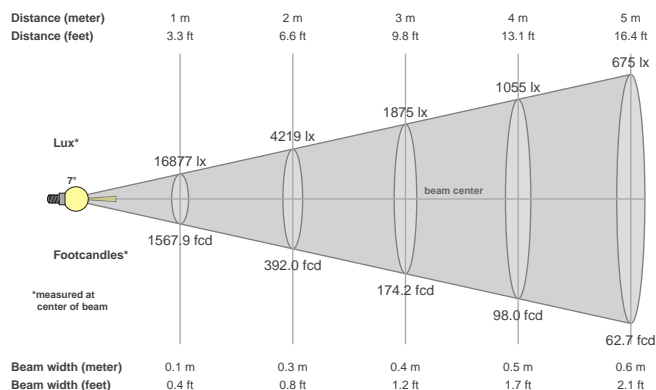


Color vector graphics



Color temperature	Color rendering index	Red component	Color fidelity	Color gamut	Color quality scale	Color coordinate cie 1931	Color coordinate cie 1931	Color coordinate	Color coordinate	Color deviation from black body
CCT	CRI	CRI R9	TM30 Rf	TM30 Rg	CQS	x	y	u	v	Δuv
3000 K	91.9	56.7	91.0	99.7	90.7	0.437	0.404	0.249	0.349	0.0014

Beam details



Beam angels

Beam angle 50%	Field angle 10%	Cutoff angle 2,5%
7.2°	12.5°	20°

Beam intensities

Peak intensity	Int. ratio in 120° cone	Int. ratio in 90° cone
16877 cd	98.3%	98.0%

Beam intensities from 1-20m

1m	2m	3m	4m	5m	6m	7m	8m	9m	10m	11m	12m	13m	14m	15m	16m	17m	18m	19m	20m
3.3ft	6.6ft	9.8ft	13.1ft	16.4ft	19.7ft	23ft	26.2ft	29.5ft	32.8ft	36.1ft	39.4ft	42.7ft	45.9ft	49.2ft	52.5ft	55.8ft	59.1ft	62.3ft	65.6ft
16877lx	4219lx	1875lx	1055lx	675lx	469lx	344lx	264lx	208lx	169lx	139lx	117lx	100lx	86lx	75lx	66lx	58lx	52lx	47lx	42lx
1567.9fcd	392fcd	174.2fcd	98fcd	62.7fcd	43.6fcd	32fcd	24.5fcd	19.4fcd	15.7fcd	13fcd	10.9fcd	9.3fcd	8fcd	7fcd	6.1fcd	5.4fcd	4.8fcd	4.3fcd	3.9fcd

The above information is for 3000K colour temperature, for specific module information please see LED spec located on our website

For information regarding other colour temperatures please use the following factors for lumen output and candelas:

2700K = 0.9

4000K = 1.08