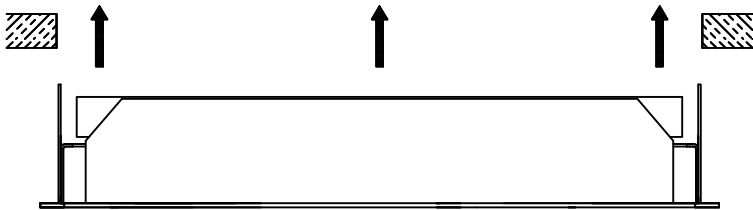


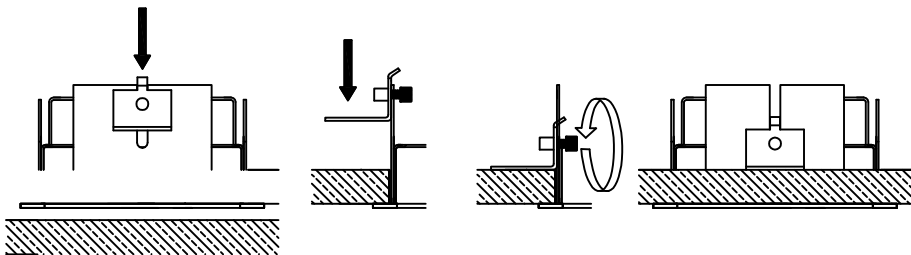
Installation Instructions Prospex Gimbals, Gen2.

MINI	Cut hole as follows:	MIDI	Cut hole as follows:	MICRO	Cut hole as follows:
116/2-TL/TR	108 x 108mm	120/2-TL/TR	143 x 143mm	153-TL/TR	77 x 77mm
216/2-TL/TR	224 x 108mm	220/2-TL/TR	278 x 143mm	253-TL/TR	157 x 77mm
316/2-TL/TR	324 x x108mm	320/2-TL/TR	408 x 143mm	353-TL/TR	237 x 77mm

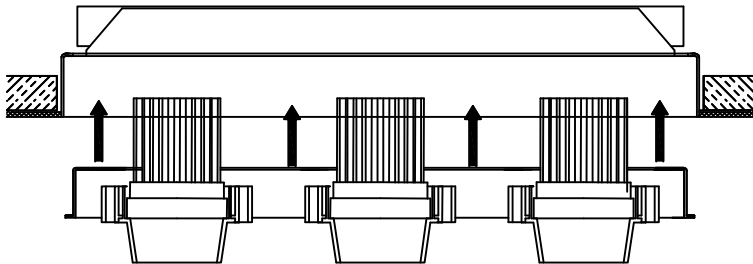
Installation Instructions for Trimmed.



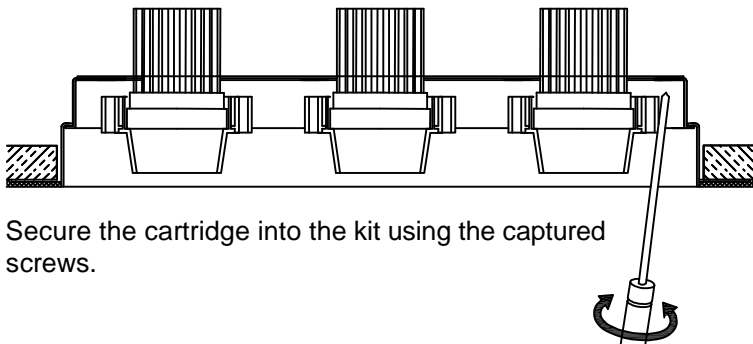
After the ceiling is finished, fit the installation kit into the hole.



The fixing bracket(s) are installed in the slots at the short ends of the Gimbal housing as illustrated above. Finger tighten the knurled bolt, and securely tighten with an Allen (Hex) key after checking the Gimbal is sitting correctly in the cut-out and against the ceiling.

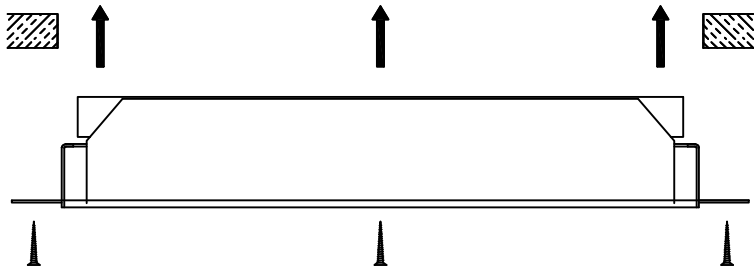


Install the gimbal cartridge into the installation kit.

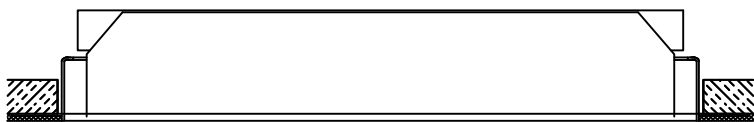


Secure the cartridge into the kit using the captured screws.

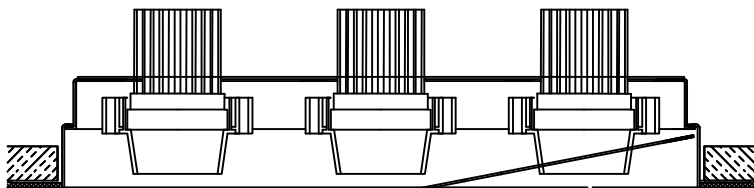
Installation Instructions Trimless.



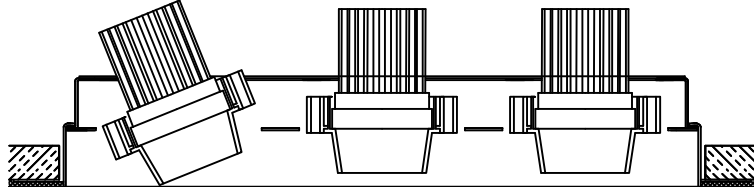
Fit the installation trim into the hole, square up trim as required and fix the frame to plasterboard with screws. *(Recommended - for additional strength bond trim into the hole).*



Skim plaster to the lip edge of the plaster kit. Make good, ensuring the inside face of the installation kit is free from plaster and paint ceiling, making sure to not paint the inside face of the kit.

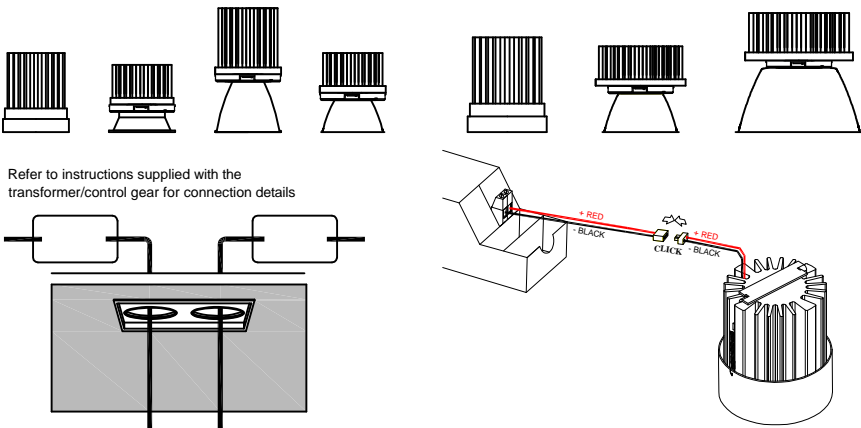


Install the Gimbal cover plate, the plate is held in by magnets.



Installation is now complete and gimbals can be aimed as required.

LED - XIC versions:



Install LED Drivers through the hole for the luminaire. Wire Primary and, if required, the dimming control input of the equipment according to the installation instructions provided/printed on the driver. Ensuring the driver is not energised, connect the LED lead to the flying lead from the driver. Observe the LED warning label attached to the modules cable. remove label prior to installation (removal of the label implies understanding and acknowledgement of the conditions for installation).

