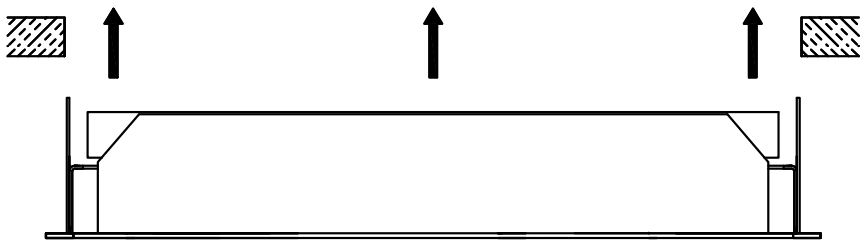


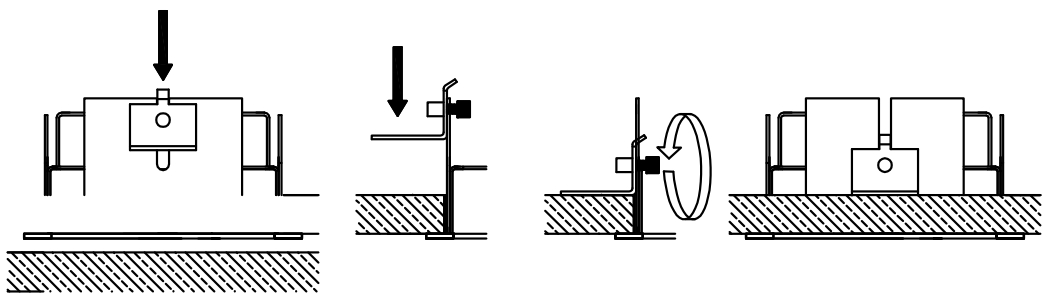
Installation Instructions Prospex Gimbals, Gen2.

MINI	Cut hole as follows:	MIDI	Cut hole as follows:	MICRO	Cut hole as follows:
116/2-TL/TR	108 x 108mm	120/2-TL/TR	143 x 143mm	153-TL/TR	77 x 77mm
216/2-TL/TR	224 x 108mm	220/2-TL/TR	278 x 143mm	253-TL/TR	157 x 77mm
316/2-TL/TR	324 x x108mm	320/2-TL/TR	408 x 143mm	353-TL/TR	237 x 77mm

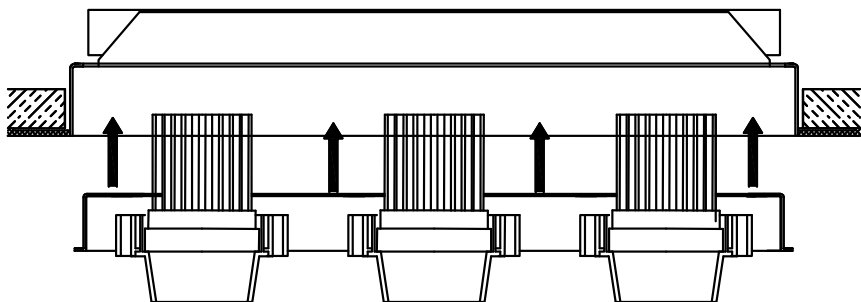
Installation Instructions for Trimmed.



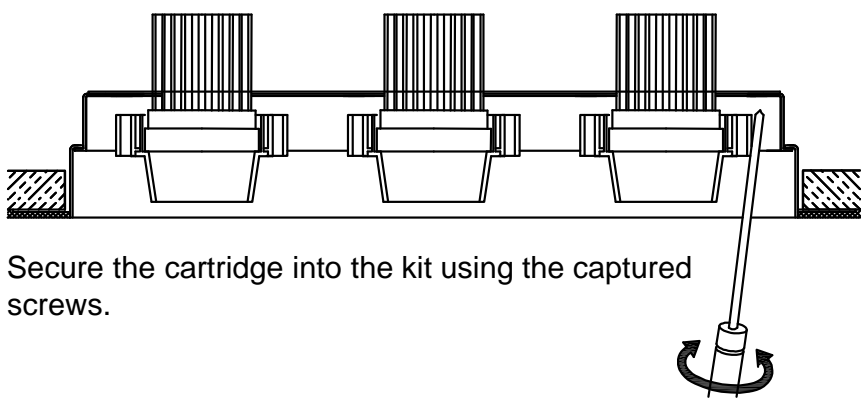
After the ceiling is finished, fit the installation kit into the hole.



The fixing bracket(s) are installed in the slots at the short ends of the Gimbal housing as illustrated above. Finger tighten the knurled bolt, and securely tighten with an Allen (Hex) key after checking the Gimbal is sitting correctly in the cut-out and against the ceiling.

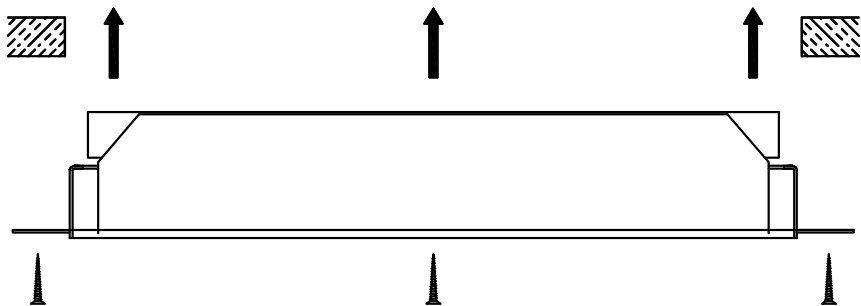


Install the gimbal cartridge into the installation kit.

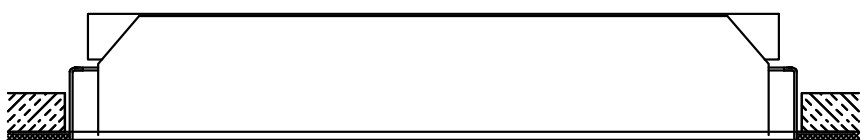


Secure the cartridge into the kit using the captured screws.

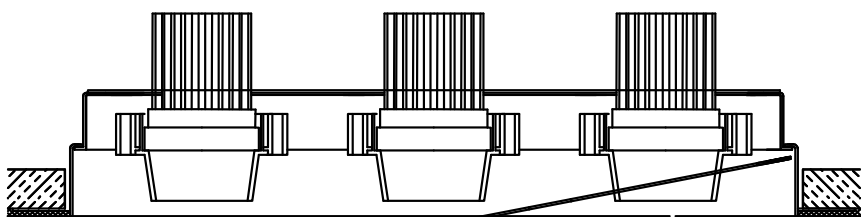
Installation Instructions Trimless.



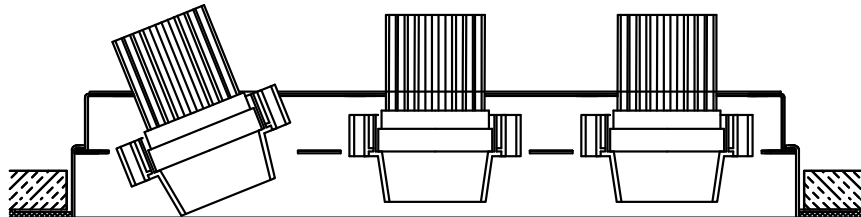
Fit the installation trim into the hole, square up trim as required and fix the frame to plasterboard with screws. *(Recommended - for additional strength bond trim into the hole).*



Skim plaster to the lip edge of the plaster kit. Make good, ensuring the inside face of the installation kit is free from plaster and paint ceiling, making sure to not paint the inside face of the kit.



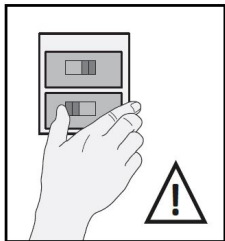
Install the Gimbal cover plate, the plate is held in by magnets.



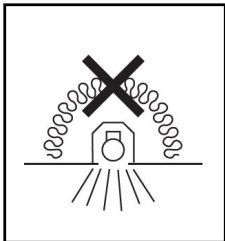
Installation is now complete and gimbals can be aimed as required.

LED Modules Instructions

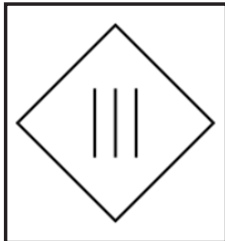
Installation and servicing of Lucent LED modules should always be carried out by a qualified and competent person, in conjunction with these instructions for the LED modules and the particular Lucent light fittings instructions.
For further information or assistance contact Lucent Lighting.



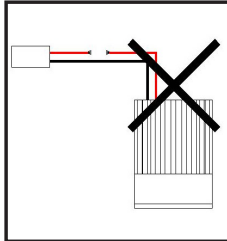
Switch off mains power before installation or servicing.



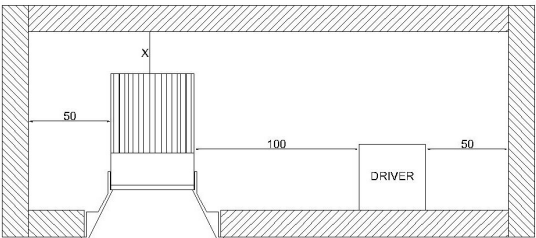
Do not cover luminaire & LED module with insulation material.



Lucent LED modules are all insulation class III. Drivers used must be SELV (<60Vdc)



LED lead, if damaged, lead cannot be replaced, the LED module is to be replaced.

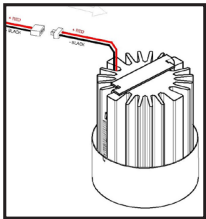


Leave the minimum distances detailed above around the luminaire and driver.
X = LED35 modules, min. 15mm
LED51 modules min. 25mm
LED71 modules min. 25mm

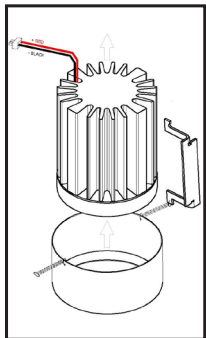
Note some driver and fitting combinations may require a bigger recess depth to install driver.

Servicing LED modules.

Lucent LED modules are **non user** replaceable. LED modules should only be replaced a qualified person, the manufacturer or a similar qualified person.



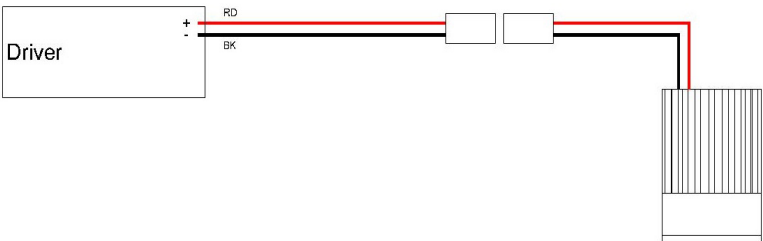
Switch off mains power.
Disconnect LED module from the driver.
Take off the fixing brace by removing the hooked spring to free the LED module.



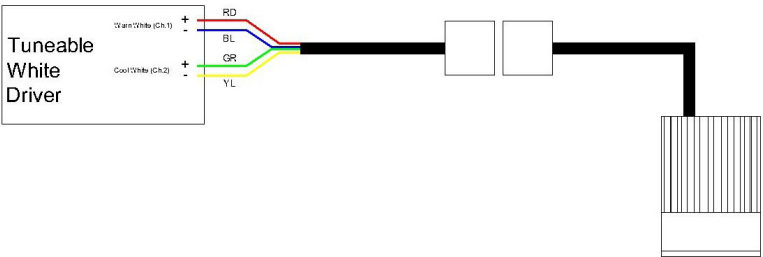
Remove the LED module.
Reverse process to re-install the LED module and re-connect to the driver before turning on the mains power.

LED Module	Drive Current	Typ. forward volt	Mod. Power
LED35/2 LED35/U	350mA max.	18vdc	6.3w max.
LED51/2 LED51/U	350mA max	33vdc	11.6w
LED71 - LED71/U	700mA max	33vdc	23.1w
LED51WD	500mA	29.1vdc	15.6w
LED51TW	700mA	18.4vdc per Ch.	12.6w max. per CH.
LED71WD	1000mA	23.0vdc	23.0w
LED71TW	1000mA	23.4vdc per Ch.	23.4w max. per Ch.

All LED drivers supplied by Lucent will be pre-wired with a lead that has the correct connector to match the LED module used.
If connectors removed, warranty will be void.
If the driver needs to be replaced, or cables extended refer to following wiring diagrams.



For LED35/2, LED51/2, LED71, ULTRA & LED51WD, LED71WD. Refer to specific driver connections for the exact driver terminals configuration.



For LED51TW & LED71TW Refer to specific driver connections for the exact driver terminals configuration.



The Luminaire should be positioned so that prolonged staring into the luminaire at a distance of 1.68m is not expected (applies ONLY to LED71 & LED71/U modules).