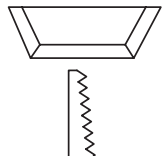


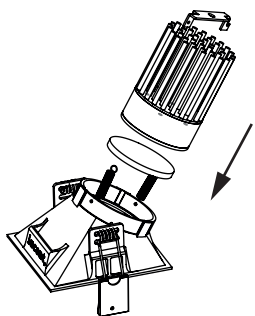
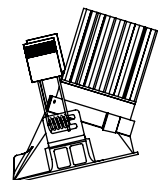
Installation Instructions Prospex® MiniTRIM Square Wallwash 860-LED-SQ-WW



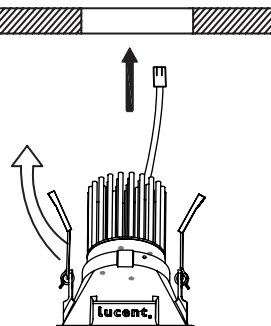
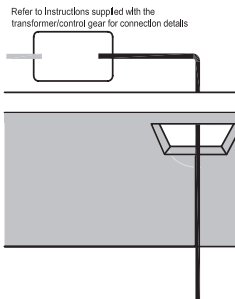
Cut hole as follows:
ProsPex 860-LED-SQ-WW
82x82mm Square



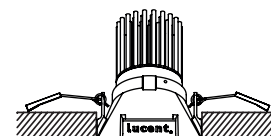
Trim off a bevel for the angled LED module



Insert any lenses/louvres into the lamp/Accessory holder (clear safety glass is factory fitted in the lower position). Then install the lamp. Lamp retaining springs will hold everything in place.



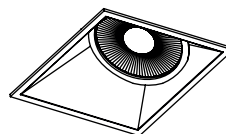
Wire the luminaire to the transformer/connector and install transformer through the ceiling cut-out. Wire equipment according to the installation instructions provided/printed on the equipment.



Carefully raise the springs to allow the fixture to pass through the cut-out.

Take care to ensure the springs do not close too hard to damage the ceiling.

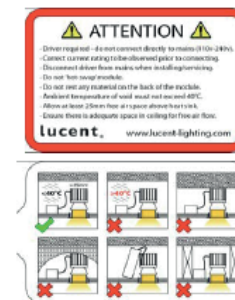
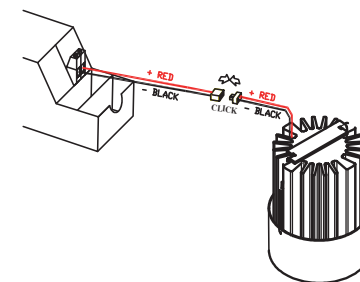
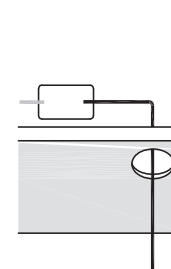
Once in position the tension of the springs will hold the luminaire in position.



Installation is now complete.

Instructions applicable for the following luminaires:

LED - XIC versions:



LED modules will normally be factory fitted in the luminaire. However if the module needs to be removed from the fixture slide the LED brace to one side exposing the hook end of the spring. Detach the spring, remove the brace and remove the LED module from the luminaire. Reverse for re-assembly

