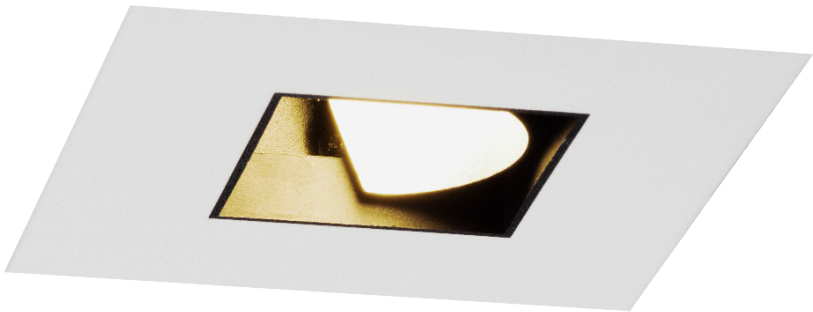
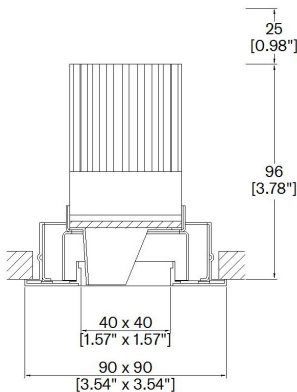


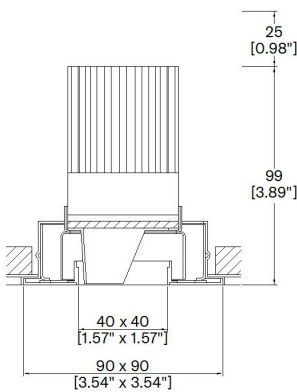
ProSpex Square Edge90 Washlight



90 x 90mm (3.54 x 3.54") overall dimension. Frosted lens and kick reflector for throwing light onto the wall as well as down. Edge baffle to ensure aperture is glare free and for a professional look. Available with standard trim kit or plaster-in kit for flush appearance. Family of matching products also available. Required depth height + 25mm ^



81433-WL-LED + 8000-PBZ-SQ
Cut-out 83mm Ø



81433-WL-LED + 8000-PCZ-SQ
Cut-out 83mm Ø

LED Source	LED51WD
CCT	3000K
Drive Current	500mA
Power inc Driver	17.1W
Beam Angle	39°
Delivered Lumens	446
Delivered Intensisty cd	584
Efficacy lm/w	26
Forward Volt	29.1V
CRI	≥95 CRI
Test results at full output	

Project Ref: _____ Location Ref: _____

Fixture Order Code: 81433-WL-LED - - -

Fixture

81433-WL-LED

Square Edge90 Washlight with LED51

Finish

WH
BK
RAL

White
Black
Custom RAL Colour*

IP Rating

54

IP54

Emergency

E
ED
ES

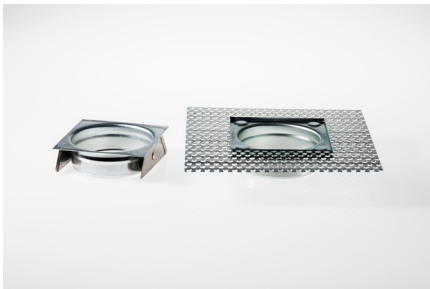
Maintained 3hr Emergency
Maintained 3hr DALI Self Test
Maintained 3hr Self Test

Installation Order Code:

Installation

8000-PBZ-SQ
8000-PCZ-SQ

Trim kit for trimmed appearance
Plaster-kit for seamless flush appearance



LED Order Code: LED51WD - - 39 -

LED

LED51WD

LED50 ONE Ambiance WarmDim

CCT

2720
3020

2700K - 2000K
3000K - 2000K

Beam

39

39°

Protocol

S
A
P
D
B

Non-Dim
Analogue (0-10v)
Phase
DALI
Bluetooth**



Honeycomb Louvre



Warm Tone

Accessories Order Code:

Louvre/Lens

- LL45 Honeycomb Louvre
- LLCC Warm Tone Lens
- LLUV UV Lens

Technical Details

*Custom RAL code must be specified. Custom RAL colours can increase prices and lead times

Dimming. Whilst Lucent can offer the majority of its luminaires with various dimming options, it remains the responsibility of the specifier/installer to check and ensure compatibility of any control equipment used. Additional cabling may be required depending on the dimming protocol specified.

**Bluetooth (wireless) is the communication method. The exact dimming protocol must be confirmed to allow the selection of suitable drivers or bluetooth devices.

^ Depth indicated is the minimum recess depth for the luminaire with a remote mounted LED driver. Installing a driver through either the luminaire cut-out or installation kit may require additional recess depth, please refer to the relevant luminaire installation instructions for further details.Data correct at time of publishing

First Fix Requirement. Luminaire comprised of fixture body with ceiling trim and installation kit, which is to be fitted into the ceiling once finished. Ensure correct alignment of the installation kit before final assembly (see luminaire instllation instructions for details)

IP Rating. Tested from underside of the ceiling

It is the policy of Lucent Lighting to continually review and improve its products and therefore reserve the right to change any details of product or withdraw specifications without prior notice.

Luminaires designed to comply with EN60598 and all other standards.

This specification sheet superseded all previous versions.

All intellectual property rights pertaining to the product described above and to this document are owned by or licensed to Lucent Lighting Ltd.

We reserve the right to take whatever action is necessary to protect those intellectual property rights.

Please notify Lucent Lighting Ltd of any inaccuracies immediately. E&OE

Light efficiency:

26 Lumen/Watt

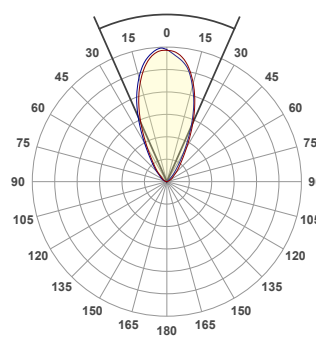
Light quality:

CRI: 95.0

Color temperature:

3000 K

47.7°



Product name:

81433-WL-LED - LED51WD-3020-39-500mA

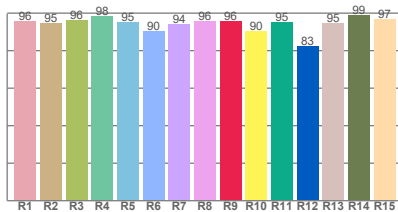
Item number:

Square Edge90 Washlight - LED51WD-3020-39-500mA

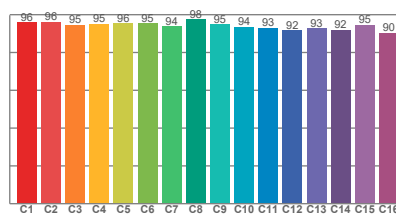
Delivered information for above fixture and LED combination.

Output: 446 Lumen Peak intensity: 584 cd Power consumption: 17.1

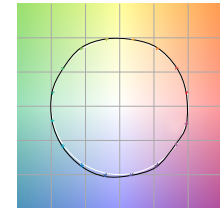
CRI R values



TM30 C Values

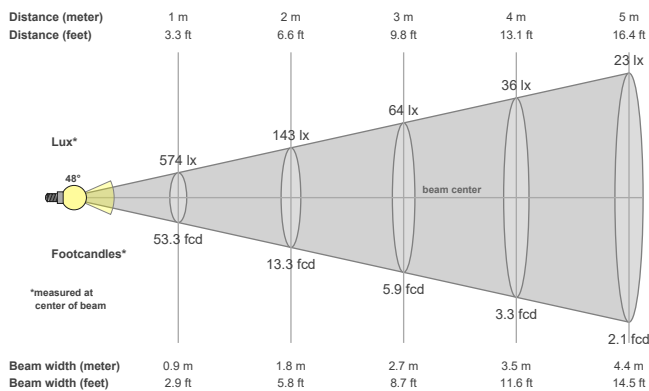


Color vector graphics



Color temperature	Color rendering index	Red component	Color fidelity	Color gamut	Color quality scale	Color coordinate cie 1931	Color coordinate cie 1931	Color coordinate	Color coordinate	Color deviation from black body
CCT	CRI	CRI R9	TM30 Rf	TM30 Rg	CQS	x	y	u	v	Δuv
3000 K	95.0	95.8	94.4	102.5	94.0	0.437	0.404	0.257	0.342	-0.0077

Beam details



Beam angels

Beam angle 50%	Field angle 10%	Cutoff angle 2,5%
47.7°	86.7°	121°

Beam intensities

Peak intensity	Int. ratio in 120° cone	Int. ratio in 90° cone
584 cd	96.0%	88.1%

Beam intensities from 1-20m

1m	2m	3m	4m	5m	6m	7m	8m	9m	10m	11m	12m	13m	14m	15m	16m	17m	18m	19m	20m
3.3ft	6.6ft	9.8ft	13.1ft	16.4ft	19.7ft	23ft	26.2ft	29.5ft	32.8ft	36.1ft	39.4ft	42.7ft	45.9ft	49.2ft	52.5ft	55.8ft	59.1ft	62.3ft	65.6ft
574lx	143lx	64lx	36lx	23lx	16lx	12lx	9lx	7lx	6lx	5lx	4lx	3lx	3lx	3lx	2lx	2lx	2lx	2lx	1lx
53.3fcd	13.3fcd	5.9fcd	3.3fcd	2.1fcd	1.5fcd	1.1fcd	0.8fcd	0.7fcd	0.5fcd	0.4fcd	0.3fcd	0.3fcd	0.3fcd	0.2fcd	0.2fcd	0.2fcd	0.2fcd	0.1fcd	0.1fcd

The above information is for 3000K colour temperature, for specific module information please see LED spec located on our website

For information regarding other colour temperatures please use the following factors for lumen output and candelas:

2700K = 0.93