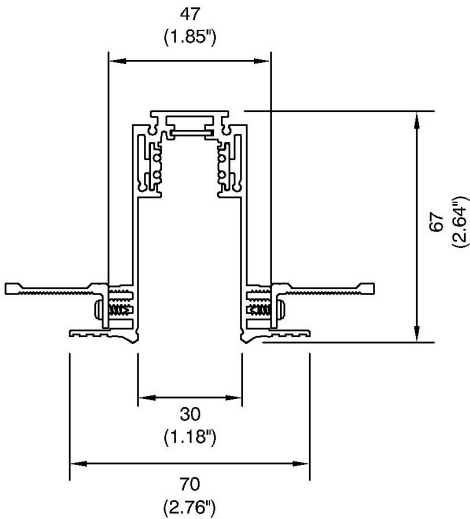


FineLINE Trimless Profile



FineLine Trimless is a compact and multi-functional aluminium low voltage profile system with a 33mm (1.31”) overall width once installed.

This system incorporates a 48v low voltage track with a magnetic snap in connection for the lighting fixtures and an integrated databus for lighting control.



FL003-TL

Project Ref: _____

Location Ref: _____

FineLINE Trimless Profile

Order Code:

FL003

 - -

TL

 -

Profile

FL003

FineLINE Trimless

Length

1

2

3

X

1 meter

2 meters

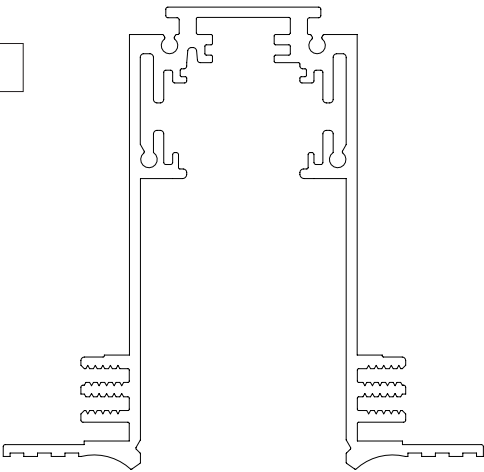
3 meters

Custom Length

Body Finish

BK

Black



Trimless End Cap

Order Code:

FL003

 -

EC

 -

Profile

FL003

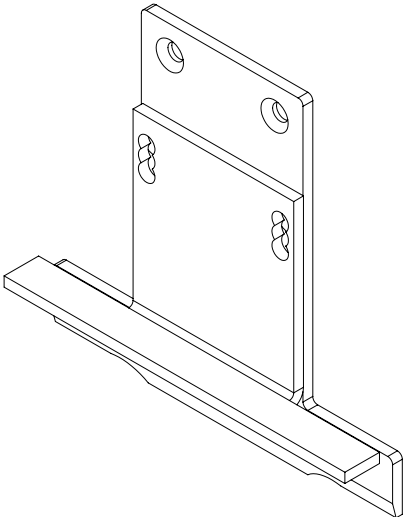
FineLINE Trimless

End Cap

Finish

BK

Black



Note: Individual items, be sure to order correct quantity. Refer to system builder page for details

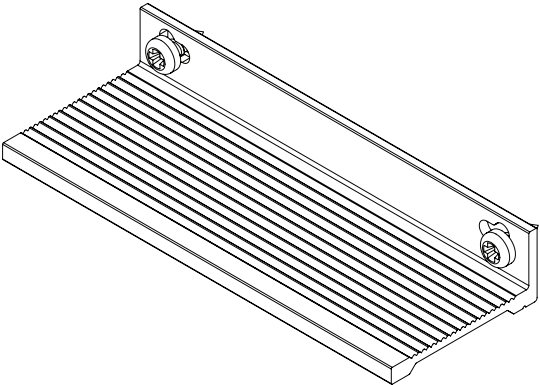
Mounting Bracket For Trimless Profile

Order Code:

S

 -

9500/315



Note: Individual items, be sure to order correct quantity. Refer to system builder page for details

Project Ref: _____

Location Ref: _____

End Feed

Order Code: 9501-S - - - E

Polarity
KR

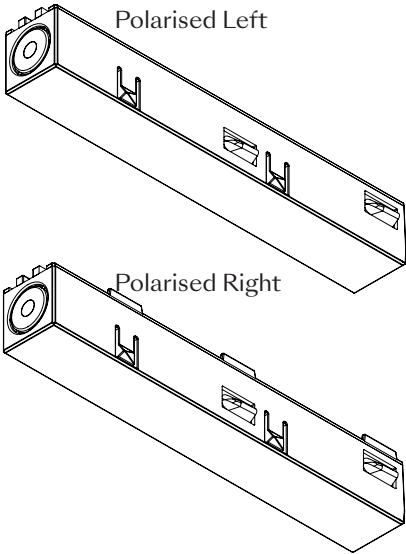
Polarity Right

KL

Polarity Left

Finish
WH
BK

White
Black

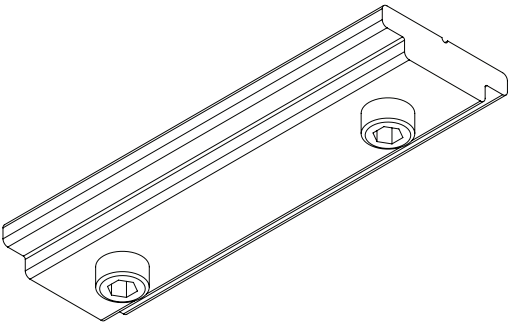


Reinforcing Bracket

Order Code: S - 9500/314 -

Colour
BK

Black



Note: Reinforcing bracket required between each track join.

Connectors

Order Code: 9503-S - K - - E

Type
K

Polarised Electrical

Finish
WH
BK

White
Black

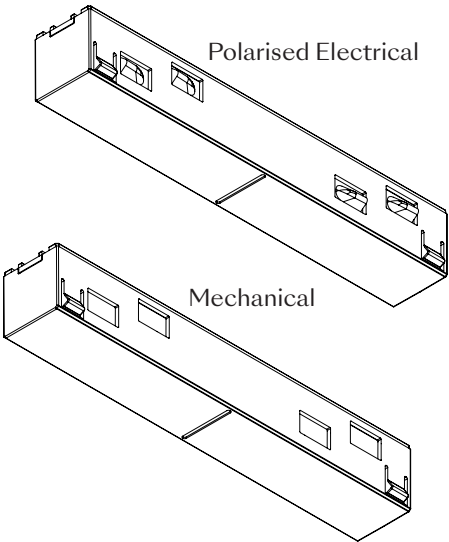
Order Code: 9503-S - - M - E

Finish
WH
BK

White
Black

Type
M

Mechanical



Project Ref: _____

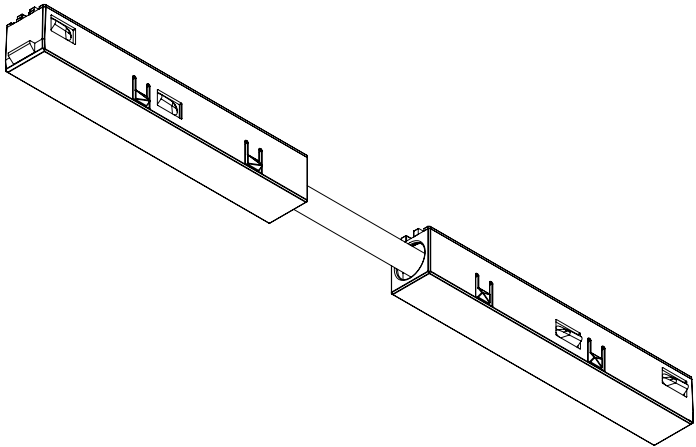
Location Ref: _____

Adjustable Corner Connector

Order Code: 9518-S-K - - E

Finish
WH
BK

White
Black



Used with corner section FL002-90 or when creating mitre-cut angles to maintain electrical continuity.

FineLine Trimless Corner Section

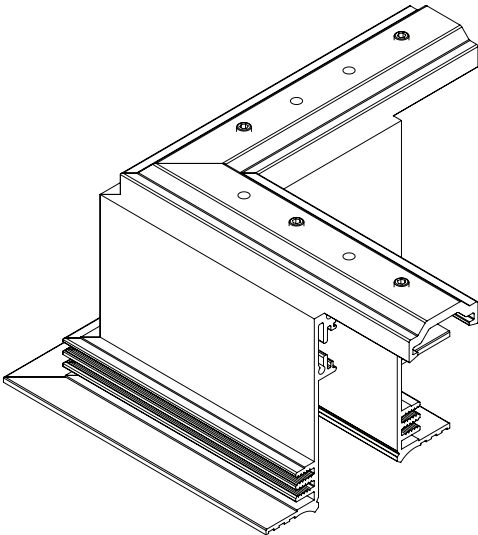
Order Code: FL003 - 90 -

FineLINE Profile

Corner Section

Body Finish
BK

Black



Size: 100 x 100mm

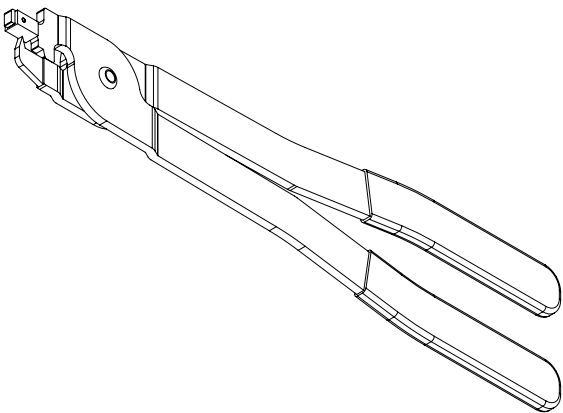
Project Ref:_____

Location Ref:_____

Cutting Tool For Track Conductors

Order Code:

S-9000/T



Used when field cutting profiles to cut back electrical conductors to the correct position.
.....

Optional Blanking Cover Acessory

Order Code:

FL

 -

BC

 -

3

 -

Blanking Cover _____

Length

3

3 meters

Finish

BK

Black



Size: 70 x 70mm

Technical Details

*Custom RAL code must be specified. Custom RAL colours can increase prices and lead times

Dimming. Whilst Lucent can offer the majority of its luminaires with various dimming options, it remains the responsibility of the specifier/installer to check and ensure compatibility of any control equipment used. Additional cabling may be required depending on the dimming protocol specified.

The exact dimming protocol must be confirmed to allow the selection of suitable drivers or bluetooth devices.

^ Depth indicated is the minimum recess depth for the luminaire with a remote mounted LED driver. Installing a driver through either the luminaire cut-out or installation kit may require additional recess depth, please refer to the relevant luminaire installation instructions for further details. Data correct at time of publishing

First Fix Requirement. Luminaire comprised of fixture body with ceiling trim and installation kit, which is to be fitted into the ceiling once finished. Ensure correct alignment of the installation kit before final assembly (see luminaire installation instructions for details)

IP Rating. Tested from underside of the ceiling

It is the policy of Lucent Lighting to continually review and improve its products and therefore reserve the right to change any details of product or withdraw specifications without prior notice.

Luminaires designed to comply with EN60598 and all other relevant standards.

This specification sheet superseded all previous versions.

All intellectual property rights pertaining to the product described above and to this document are owned by or licensed to Lucent Lighting Ltd.

We reserve the right to take whatever action is necessary to protect those intellectual property rights.

Please notify Lucent Lighting Ltd of any inaccuracies immediately. E&OE

Compatible Products

The Lucent FineLine system is compatible with FineLine versions of the following product ranges:

- TubeLED Mini LED spotlights (Static White versions only)
- TubeLED Micro LED spotlights
- TubeLED Nano LED spotlights
- Prospex Line 2, 5 and 10 lamp
- TubeLED Mini Pendant
- TubeLED Micro Pendant
- Prospex Linear

Refer to FineLine luminaire specification sheets for available dimming types.

FineLine 48V DC Power Supplies

Power supplies for FineLine system are 48V DC. The power supplies require no dimming or control connections. All dimming controls are to go directly to the track (please refer to installation instruction for full details).

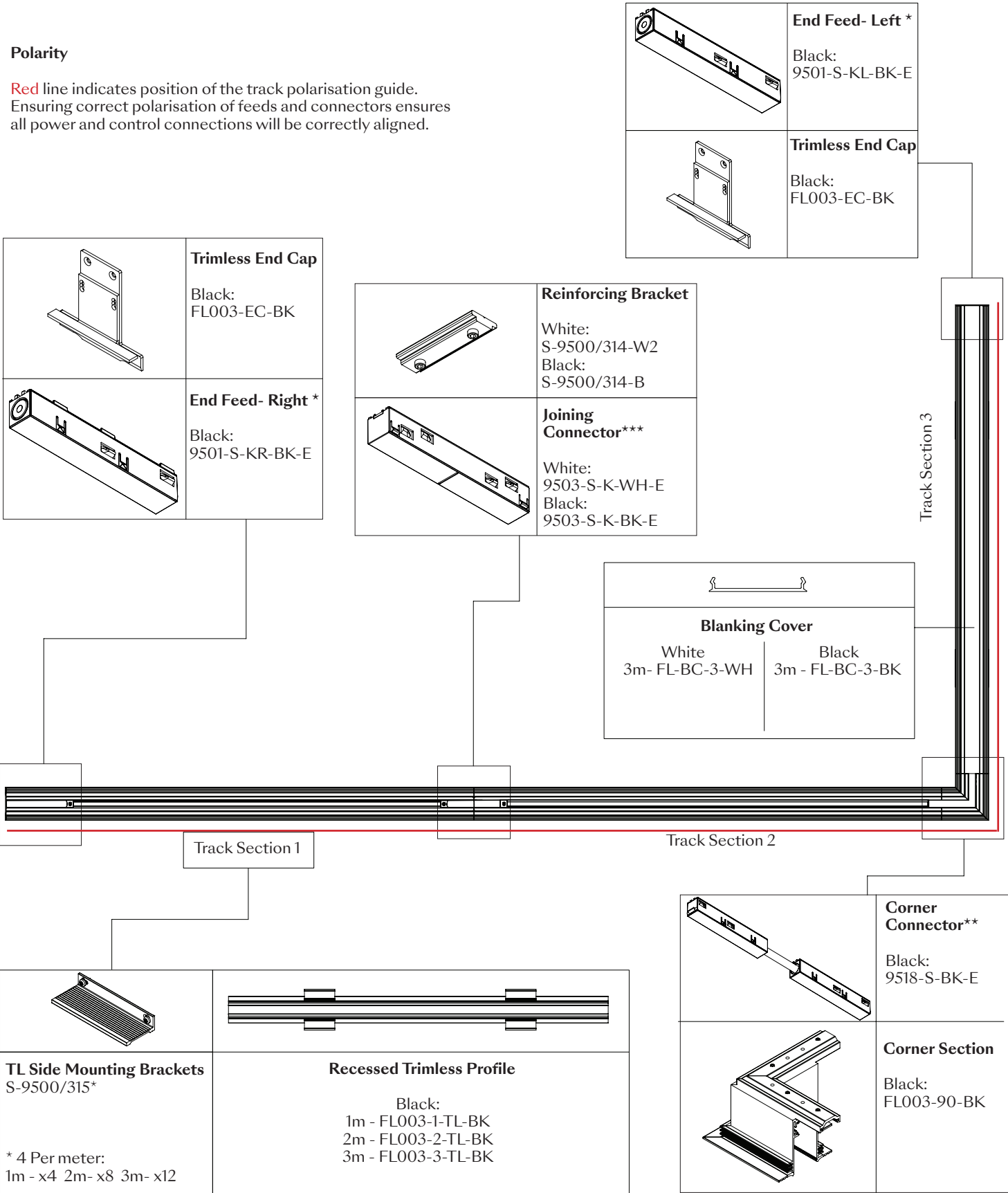
Drivers available:

60W - 48VDC
100W - 48VDC
150W - 48VDC
200W - 48VDC
250W - 48VDC

System Builder - FineLINE Trimless

Polarity

Red line indicates position of the track polarisation guide. Ensuring correct polarisation of feeds and connectors ensures all power and control connections will be correctly aligned.



* End feed only required on one end of profile run. Choose left or right feed depending on where cable entry point is most convenient.
** If feeding from both ends of a run, or using the corner as a feed for one section of your configuration, use the Mechanical Corner Connector, 9511-ME or MI, depending on the system's polarity.
*** To electrically separate sections of track, use 9503-S-BK-M mechanical connector.