

## Light efficiency:

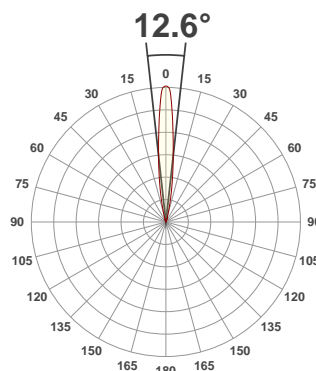
**62 Lumen/Watt**

## Light quality:

**CRI: 92.0**

## Color temperature:

**3000 K**



## Product name:

**Edge90 Fixed\_Accent -LED50  
ONE GEN2, 3000K, 12°,  
250mA**

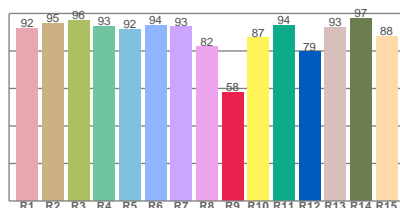
## Item number:

**91413-F/A - LED51/2-30-12-250mA**

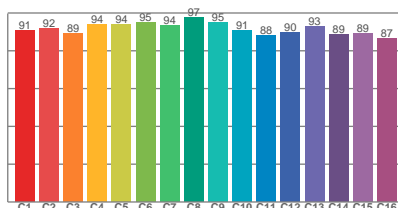
**Delivered information for above  
fixture and LED combination.**

**Output: 603 Lumen Peak intensity: 7727 cd Power consumption: 9.7**

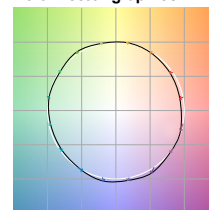
## CRI R values



## TM30 C Values

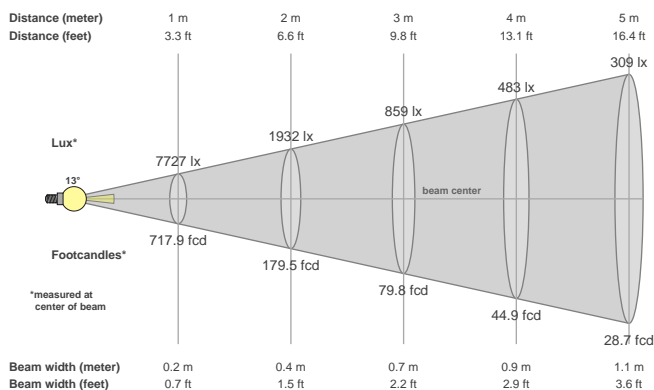


## Color vector graphics



Color temperature	Color rendering index	Red component	Color fidelity	Color gamut	Color quality scale	Color coordinate cie 1931	Color coordinate cie 1931	Color coordinate	Color coordinate	Color deviation from black body
CCT	CRI	CRI R9	TM30 Rf	TM30 Rg	CQS	x	y	u	v	Δuv
3000 K	92.0	57.9	91.7	99.8	90.6	0.437	0.404	0.250	0.348	0.0008

## Beam details



## Beam angels

Beam angle 50%	Field angle 10%	Cutoff angle 2,5%
12.6°	26.6°	37.8°

## Beam intensities

Peak intensity	Int. ratio in 120° cone	Int. ratio in 90° cone
7727 cd	98.5%	97.8%

## Beam intensities from 1-20m

1m	2m	3m	4m	5m	6m	7m	8m	9m	10m	11m	12m	13m	14m	15m	16m	17m	18m	19m	20m
3.3ft	6.6ft	9.8ft	13.1ft	16.4ft	19.7ft	23ft	26.2ft	29.5ft	32.8ft	36.1ft	39.4ft	42.7ft	45.9ft	49.2ft	52.5ft	55.8ft	59.1ft	62.3ft	65.6ft
7727lx	1932lx	859lx	483lx	309lx	215lx	158lx	121lx	95lx	77lx	64lx	54lx	46lx	39lx	34lx	30lx	27lx	24lx	21lx	19lx
717.9fcd	179.5fcd	79.8fcd	44.9fcd	28.7fcd	19.9fcd	14.7fcd	11.2fcd	8.9fcd	7.2fcd	5.9fcd	5fcd	4.2fcd	3.7fcd	3.2fcd	2.8fcd	2.5fcd	2.2fcd	2fcd	1.8fcd

The above information is for 3000K colour temperature, for specific module information please see LED spec located on our website

For information regarding other colour temperatures please use the following factors for lumen output and candelas:

2700K = 1  
3500K = 1  
4000K = 1.084